



## CS3 (McLeod Lake) Compressor Station Upgrade Project Emergency Response Plan

McLeod Lake Station - Facilities Construction

U2904

Major Projects Safety

Ver.	Date	Prepared by	Checked by	Approved by
Rev. 0	Sept 29, 2019	██████████	██████████	██████████



## CS3 (McLeod Lake) Compressor Station Upgrade Project

Legal Land Description (LSD): LOT 1 DISTRICT LOT 11808 CARIBOO DISTRICT PLAN 8688 <b>AND</b> LOT 2 DISTRICT LOT 11808 CARIBOO DISTRICT PLAN 868		
GPS Coordinates:		N 55°01'54.6" W 123°01'58.1"
Police, Fire, Ambulance	911	Indicate emergency
RCMP – Mackenzie	1-250-997-3288	Non-emergency
Stars (Site # ---)	1-800-661-2455	Indicate emergency
Poison Control Center	1-800-332-1414	Be prepared to name substance
Hospital – Mackenzie & District Hospital	1-250-997-3263	Non-emergency <b>(08:00-14:30 Mon-Fri)</b>
Directions to Hospital:  Mackenzie & District Hospital & Health Centre 45 Centennial Dr. Mackenzie, BC	From the Enbridge CS-3 McLeod Lake Station:  Travel N on BC 97S for 12km's Turn left onto BC-39N for 29km Turn left onto Centinnial and drive for 400m Mackenzie Hospital on the left.	
B.C. Wildfire (24 Hour)	1-800-663-5555 *5555 (cellphone)	<a href="https://www2.gov.bc.ca/gov/content/safety/wildfire-status/contact-channels/report-a-wildfire">https://www2.gov.bc.ca/gov/content/safety/wildfire-status/contact-channels/report-a-wildfire</a>
Environment Canada	N/A	<a href="https://weather.gc.ca/">https://weather.gc.ca/</a>
B.C. Emergency Management Agency	800-663-7867	<a href="https://www2.gov.bc.ca/gov/content/safety/emergency-preparedness-response-recovery/emergency-management-bc">https://www2.gov.bc.ca/gov/content/safety/emergency-preparedness-response-recovery/emergency-management-bc</a>
Canada Emergency Alert	N/A	<a href="https://www.alertready.ca/">https://www.alertready.ca/</a>
Road Conditions, Closures	N/A	<a href="https://www.drivebc.ca/mobile/events/index.html">https://www.drivebc.ca/mobile/events/index.html</a>
B.C. Occupational Health & Safety	1-888-621-7233	<a href="https://www.worksafebc.com/en/law-policy/occupational-health-safety/ohs-guidelines">https://www.worksafebc.com/en/law-policy/occupational-health-safety/ohs-guidelines</a>
<b>Security</b>		
<b>Enbridge Control Centre Operations (CCO) Contacts</b>		
Enbridge Calgary Gas Control	1-800-663-9931 / 1-403-699-1700	



<b>Enbridge CS-3, McLeod Lake Station Contacts</b>			
<b>Name</b>	<b>Position</b>	<b>Mobile #</b>	<b>Office #</b>
CS-3 (McLeod Lake) Operations	On shift Personnel	-----	-----
██████████	Site Operations Lead	██████████	██████████
██████████	Operations Supervisor	██████████	██████████
██████████	Area Operations Manager T-North	██████████	██████████
<b>Construction Management Team</b>			
<b>Name</b>	<b>Position</b>	<b>Mobile #</b>	<b>Office #</b>
TBD	Sr. Construction Specialist	-----	-----
TBD	Chief Inspector	-----	-----
TBD	Ast. Chief Inspector	-----	-----
TBD	Civil Inspector	-----	-----
TBD	Mechanical Inspector	-----	-----
TBD	Field Safety Inspector	-----	-----
██████████	Sr. Safety Coordinator	██████████	██████████
TBD	First Aid Attendant OFA III	-----	-----
TBD	Site Admin	-----	-----
<b>Project Management Team</b>			
<b>Name</b>	<b>Position</b>	<b>Mobile #</b>	<b>Office #</b>
██████████	Director, Projects		██████████
██████████	Manager, Projects		██████████
██████████	PM, Compressors		██████████
██████████	PM, Facility Upgrades & Pipeline		██████████
██████████	Const. Manager	██████████	
██████████	Manager, Facilities Safety	██████████	██████████
<b>Neighboring Stakeholders:</b>			



## Table of Contents

---

<b>Facility Emergency Numbers</b> .....	2
Local & Project Contact Numbers .....	3
<b>Purpose</b> .....	5
<b>Scope</b> .....	5
<b>Responsibilities</b> .....	5
Enbridge Construction Management Team .....	5
Senior Construction Specialist .....	5
Construction Coordinators .....	6
Field Safety Inspector .....	6
<b>Potential Project Emergencies</b> .....	6
Emergency Procedures .....	6
Fire .....	7
Wildfire .....	7
Injury or Medical Emergency .....	8
Controlled Product Release .....	9
Severe Weather .....	9
Communication Procedures .....	9
<b>Flow Charts</b> .....	10
Head Count Communication .....	10
Incident Notification .....	11
<b>Appendices</b> .....	12
Glossary of Abbreviation & Definitions .....	13
Site Safety Plot Plan .....	14
Satellite View Map .....	15
Site Access Map .....	16
Direction to Hospital Map .....	17
Air Quality Index .....	18



## Purpose

- To serve as a guideline for project personnel to ensure a prompt and coordinated response to all emergencies

## 1. Scope

This plan applies to emergencies that are:

- The result of construction activities at the station or terminal, or
- In the immediate vicinity of the project that may affect the safety of project personnel or the public.

## 2. Responsibilities

### 2.1 Enbridge Construction Management Team

#### 2.1.1 Senior Construction Specialist

- Provide leadership and support in the implementation and continuous improvement of the Emergency Response Plan.
- Provide adequate resources in terms of personnel, time and finance for the effective implementation of this plan.
- Ensure regular communications between Enbridge representatives and all contractors in regards to construction activities that may require unique rescue considerations.
- Ensure incident notifications are conducted as required.
- Maintain communication with Enbridge Operations personnel responsible for the area.
- Ensure communication of the ERP and Wildfire plans to all personnel on site.

#### 2.1.2 Construction Coordinators

- Implement the ERP for all emergency situations by initiating calls to the appropriate personnel
- Take appropriate action to secure the scene and ensure the safety of all personnel.
- Assign responsibilities to personnel to assist with control of the emergency.
- Initiate evacuation of the area if required.
- Coordinate all necessary first aid assistance.
- Ensure all permitted workers and visitors under their control are accounted.
- Ensure the required firefighting equipment is present to effectively manage spot fires and small grass fires
- Re-issue permits after an all clear has been given.



### 2.1.3 Field Safety Inspector

- Ensure all personnel have received orientation to the project emergency response plan when arriving at site.
- Act as the evacuation coordinator to account for any missing workers and report them to the construction management team.
- Ensure appropriate action to secure the scene and ensure all personnel are out of harm's way.
- Support supervision to establish access to and control of the location. Assist with directing emergency vehicles to the incident location.
- Assist supervision and management in the implementation of the Emergency Response Plan.
- Support and advise all personnel on the implementation of the Emergency Response and Wildfire plans.
- Monitor the current Fire Danger Rating on a daily basis during the wildfire season
- Ensure any regulations are reviewed, understood, and communicated to all personnel
- Monitor the wildfire situation in the area by consulting the B.C. wildfire website <https://www2.gov.bc.ca/gov/content/safety/wildfire-status>

## 3. Potential Project Emergency Situations

- Fire and/or explosion
- Uncontrolled forest or grass fire
- Explosive or toxic gas release/vapor cloud
- Injury or medical condition
- Electrical shock
- Controlled product release/spill
- Severe weather (High winds, Thunderstorms, Snowstorms, etc.)
- Excavation/cave in
- Fall from heights
- Confined space emergency

### 3.1 Emergency Procedures

In the event of an emergency situation on site, all construction work will cease, immediate reporting will occur and the emergency response plan will be followed. No project construction activity will resume until the emergency situation has been controlled. Enbridge and Contractor Supervision will deem the situation and/or area to be under control before safe and work permits are re-validated.

Local evacuation of specific work areas will be initiated by the use of air horns, verbal instruction, radio and/or hand gestures. Construction management must be notified immediately.

Site wide evacuations will be initiated by the sounding of the site sirens and/or as instructed by the Construction Manager or their designate. All evacuations will be carried out on foot. Vehicles in transit must



stop on the side of the road and the engine shut off. Keys must be left in the ignition or on the seat. Only emergency vehicles authorized by the terminal operations manager may travel on site during an emergency.

### 3.1.1 In the event of a fire:

- Attempt to extinguish the fire with a portable extinguisher (only if it is safe to do so).
- If the fire cannot be controlled or escalates, immediately egress the area, warn others by the use of air horns, verbal notification and/or hand gestures, call 911.
- When calling 911:
  - Indicate the location of the emergency (Enbridge Richardson Station)
  - Remain calm.
  - Provide your name and location.
  - Provide a brief description of incident.
  - Provide type of injury and the number of injured.
  - Remain on the call unless otherwise directed by 911 operator.
- Contact the project Construction Management Team.
- Be specific when reporting the location of a fire

### 3.1.2 In the event of a Wildfire:

- Refer to [www2.gov.bc.ca/gov/content/safety/wildfire-status](http://www2.gov.bc.ca/gov/content/safety/wildfire-status) for up to date information on local fire danger throughout the province.
- Field Safety Inspectors will monitor and communicate the wildfire situation to all personnel at site through the contractor daily toolbox meetings. Communication of the B.C. Wildfire mapping will be posted in Enbridge and Contractors Lunch-trailers.
- All workers must ensure that onsite activities do not contribute to the ignition or complication of a wildfire situation. This includes ensuring all smoking materials are extinguished and disposed of in the containers provided.
- In the event a wildfire is approaching the construction site, the Enbridge Senior Construction Specialist will liaise with Enbridge Operations with regards to the implementation of an Evacuation Plan. All appropriate notifications will be made to the Project Management Team in Edmonton. The Enbridge Senior Construction Specialist will make the final decision for evacuation of Enbridge and contractor personnel.
- As required, all workers will gather at a muster point and await further instructions. All personnel must be accounted for.
- From the muster points, workers should be prepared for evacuation as directed by the Enbridge Senior Construction specialist.
- In the event an evacuation becomes necessary, Enbridge Operations and the Construction Management Team, in communication with all local authorities, will determine the safest method and route of evacuation. Initial notification of the need to evacuate will come from the B.C. Forestry wildfire management branch. Workers will be evacuated as quickly and safely as possible.



- Evacuation by road – If it is determined that evacuation by road is possible, private and Company site vehicles will be the primary method for evacuation.
- Evacuation by other means will be determined as the need arises.
- Preferential evacuation will be given to personnel with known respiratory illnesses or conditions. In the event of moderate or heavy smoke conditions, personnel with respiratory conditions will shelter in place in office or lunch trailers. Refer to the Air Quality Index Chart in appendix 6.6 for guidelines. Current Air Quality reports for areas within B.C. can be found at <https://www2.gov.bc.ca/gov/content/environment/air-land-water/air/air-quality/current-air-quality-data>
- Personnel will not be allowed to return to site until it is deemed safe by the authorities in charge of the area. Work will only resume once it is safe to do so.

### 3.1.3 In the event of an injury or medical emergency:

- Trained first aid trained personnel should provide immediate first aid treatment.
- All injured workers must report to the appropriate responder on site for assessment and treatment.
- If treatment beyond that of first aid is required workers should be transported to the local medical center.
- If an emergency requires a call to 911 (refer to the travel directions in the appendices):
  - Indicate your location (Enbridge CS-2B, Azousetta, Station)
  - Remain calm.
  - Provide your name and location.
  - Provide a brief description of incident.
  - Provide type of injury and the number of injured.
  - Remain on the call unless otherwise directed by the 911 operator.
  - Provide the 911 operator with the site STARS identification number
- Inform supervisory personnel and the construction management team.
- Construction Management Team will notify Enbridge Operations and Security of the call to 911.
- An escort vehicle must be provided at Security Gate to guide emergency response personnel to patient location.
- Incident scene must remain secured until released by CMT.





### 3.1.4 In the event of controlled product release/spill:

- Isolate the source of the release/spill if safe to do so.
- Report the release/spill to Construction Safety Specialist who will contact **McLeod Station Operations**.
- Refer to the controlled product SDS and begin clean up measures as soon as possible following all MSDS, Regulatory, Enbridge, and Contractor requirements.
- Contain the release/spill from spreading with readily available material.
- Disposal of contaminated material must follow all legislated, regulated, Enbridge and Contractor requirements.
- Incident scene must be secured until released by CMT.

### 3.1.5 In the event of severe weather:

- Stop all outdoor work if impending weather (i.e. electrical storms, extreme winds, extreme heat or cold, etc.) may impede on the safety of personnel.
- Contractors are required to provide a Severe Weather Plan to Enbridge that meets or exceeds the requirements outlined in section 4.44 of the Enbridge GTM Health and Safety Manual.
- Contractors are expected to communicate their Severe Weather Plans to their personnel and to adhere to its requirements.
- Contractors shall submit all emergency response plans to Enbridge for review and approval prior to executing any work that may require an emergency response plan.

## 3.2 Communication Systems

The worksite will be equipped with means of communications which can be utilized in the event of an emergency.

These can include one or more of the following:

- Verbal
- Telephone – Cellular and/or Landline
- 2-Way Radios

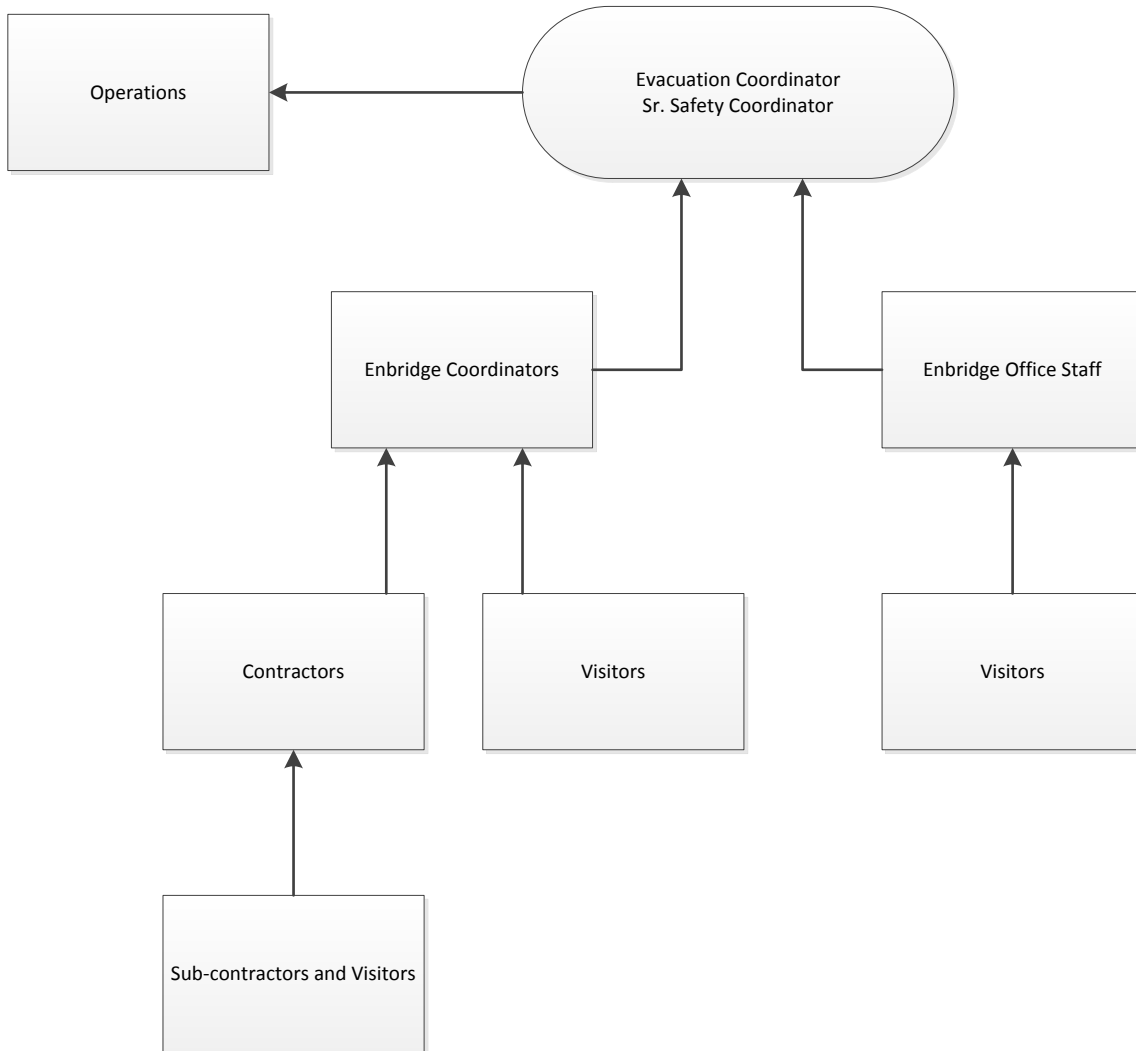
Enbridge and all contractors will take responsibility for knowing the current emergency notification systems and how to activate them.



#### 4. Flowcharts

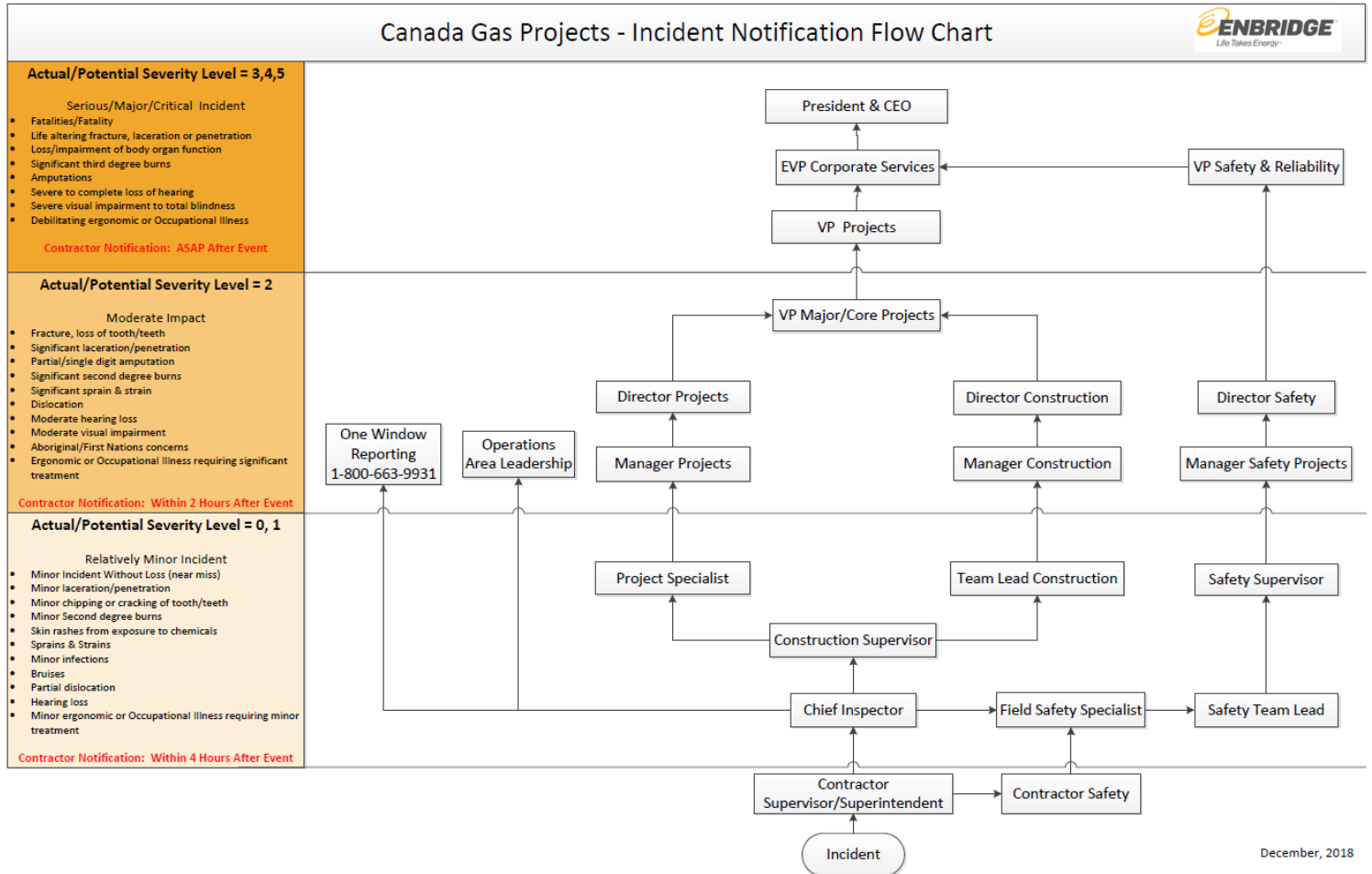
##### 4.1 Head Count Communication Flow Chart

Initiated by Project Team for Operations Initiated  
Evacuation or Project Specific Evacuation





## 4.2 Project Incident Notification Flow Chart



### IMPORTANT

- Whenever practical complete the notification process or face to face communication
- If this is not possible consider sending a text or email with a confirmation response and follow up with a phone call
- Contact up the line management if unable to reach your immediate manager.
- Reporting to gov't agencies, regulators and utility owners is an Enbridge responsibility and is done with authorization from the Project Director and Program Safety Manager.
- Contractors are required to follow their own notification procedure in addition to this flowchart.



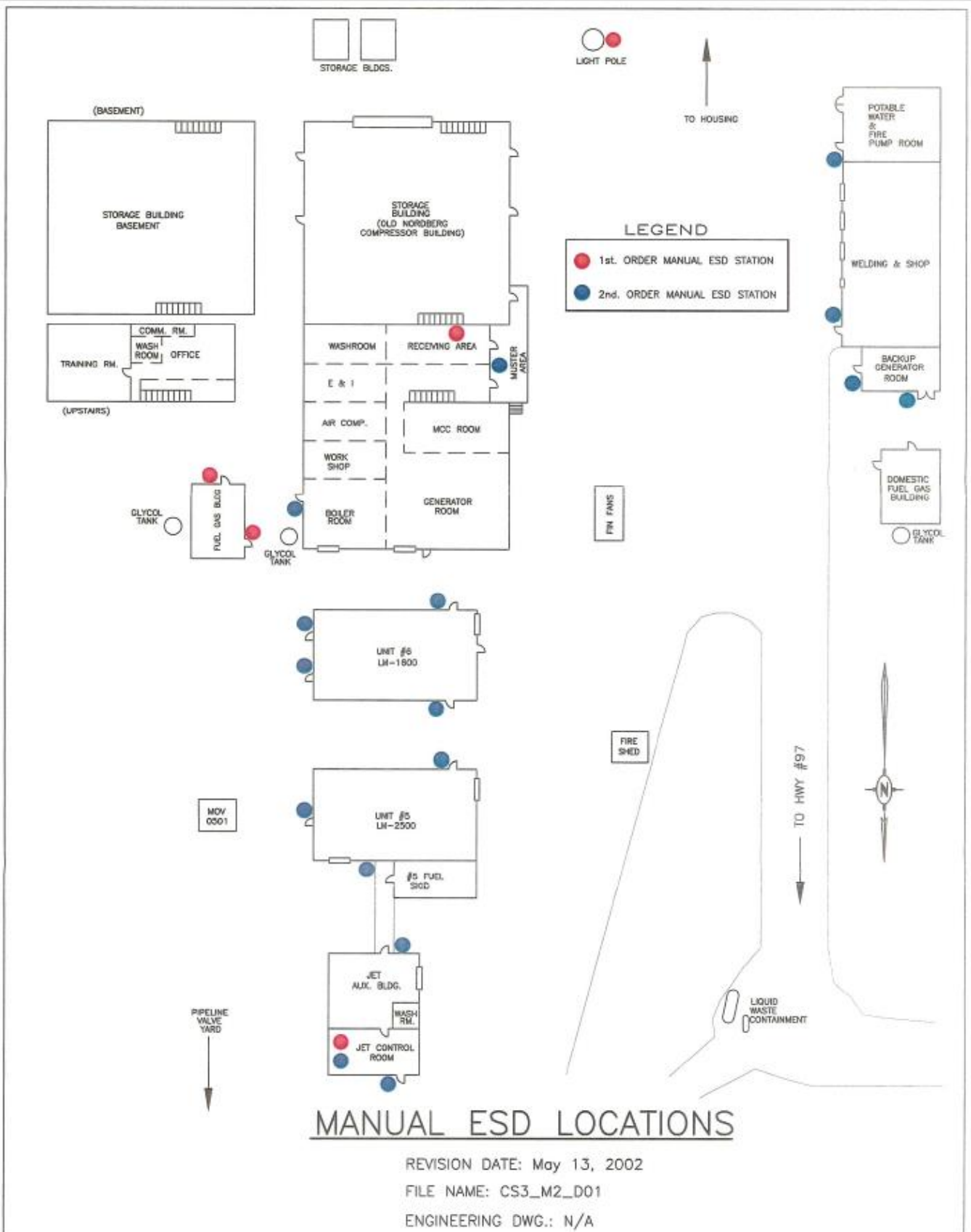
## 5. Appendices

- 5.1 Glossary of Abbreviations & Definitions
- 5.2 Site Safety Plot Plan
- 5.3 Satellite View Map
- 5.4 Directions to Hospital Map
- 5.5 Air Quality Index

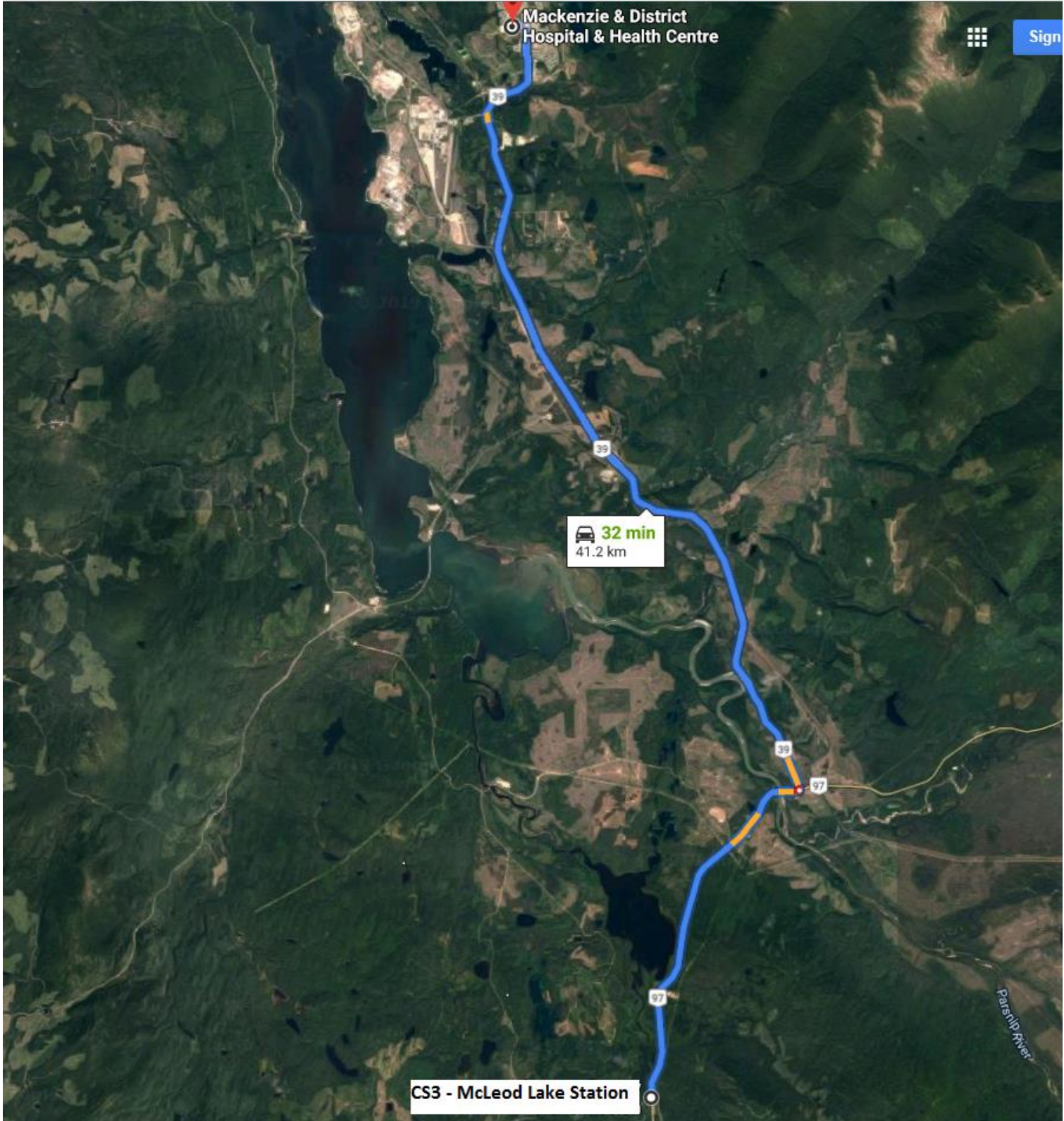


## 5.1 Glossary of Abbreviations & Definitions

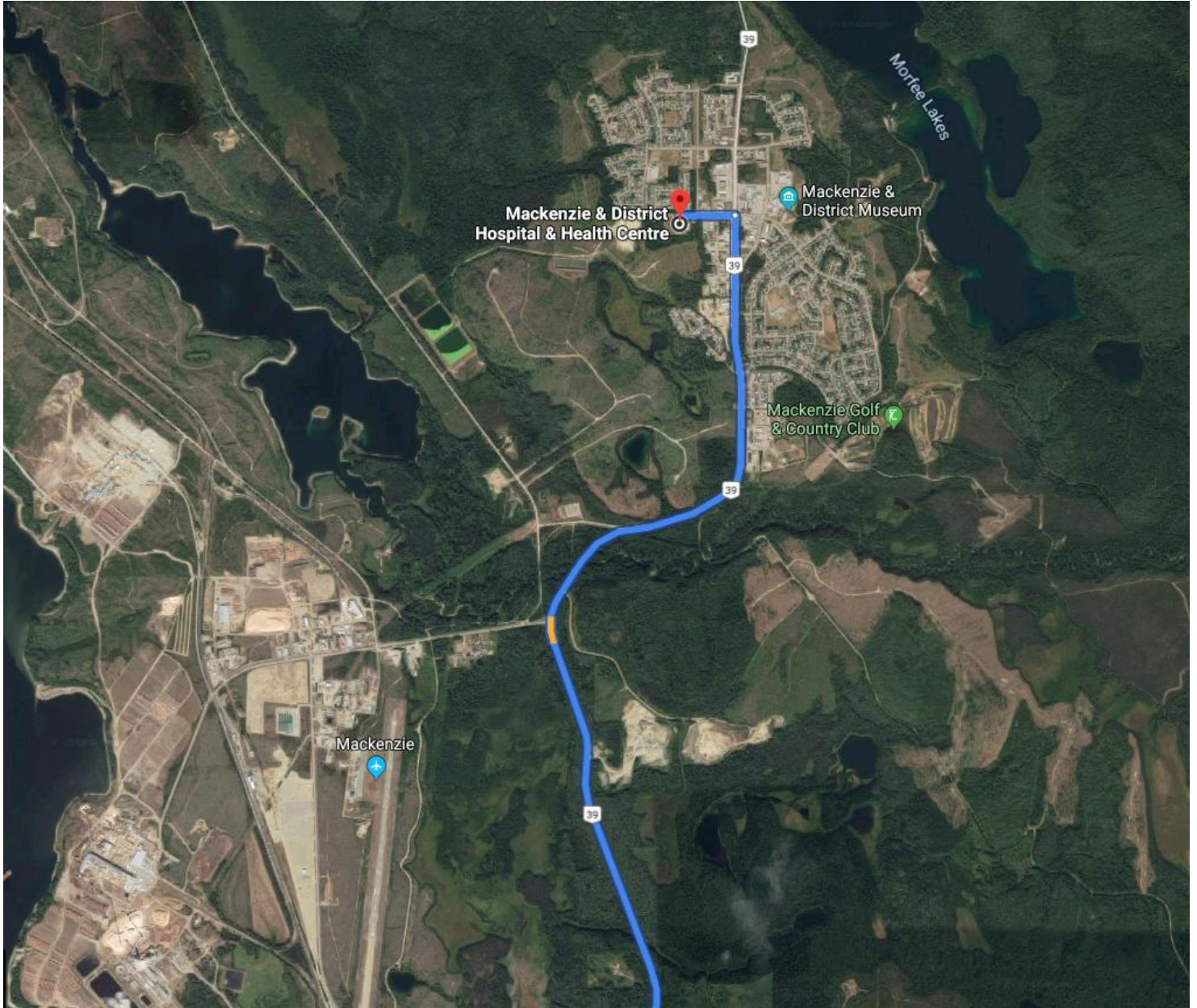
AED	Automated External Defibrillator
CMT	Construction Management Team
CSE	Confined Space Entry
ERP	Emergency Response Plan
LSE	Leadership for Safety Excellence
MTC	Mobile Treatment Center
MP	Major Projects
O2	Oxygen
(M)SDS	(Material) Safety Data Sheet
MP	Major Projects

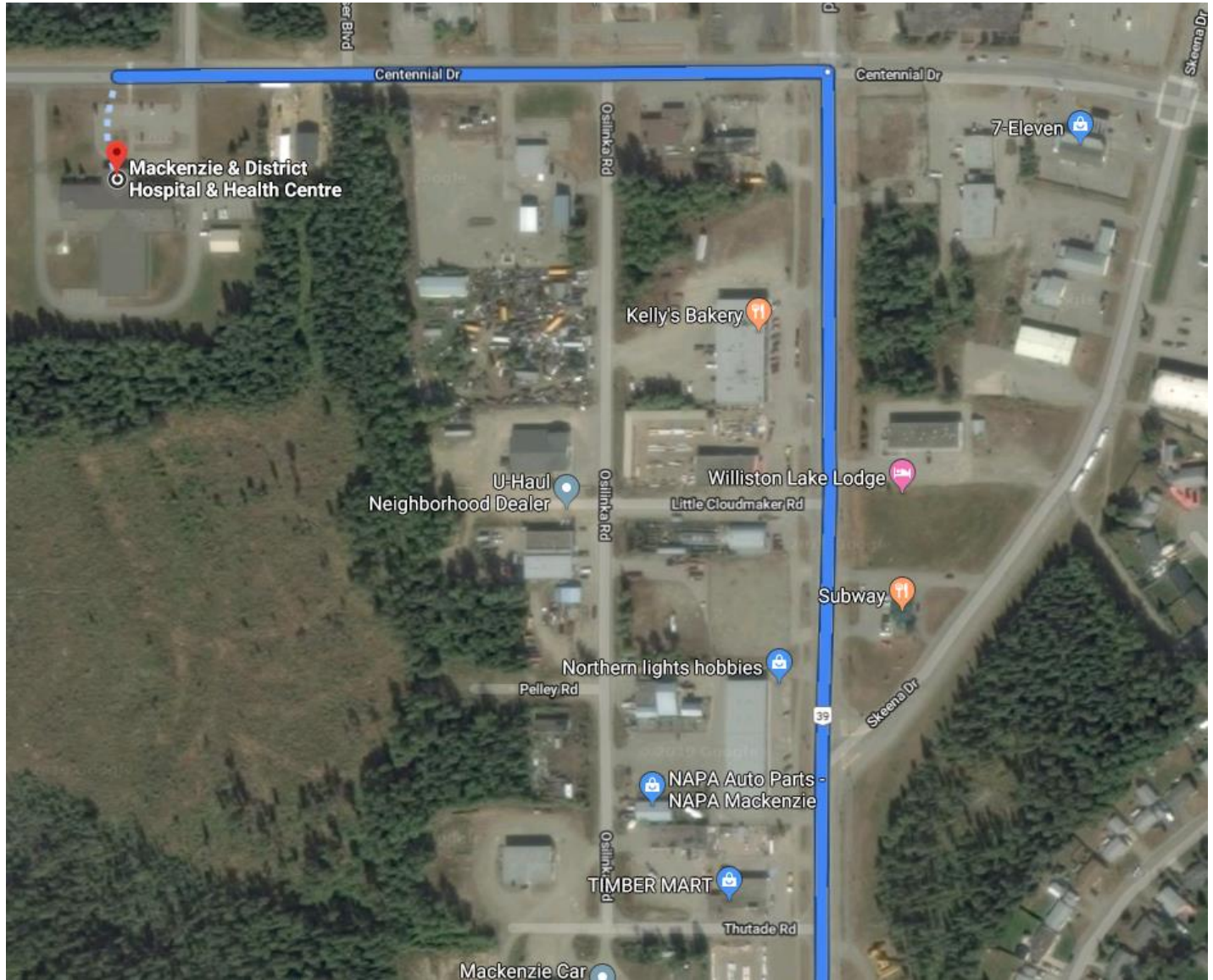














Health Risk	AQHI value	AQHI Health Messaging		Protective Actions
		At Risk Population	General Population	
Low	1-3	Enjoy usual outdoor activities	Ideal air quality for outdoor activities	<ul style="list-style-type: none"> <li>No actions are necessary unless residents are cleaning or in areas where ash/dust is disturbed.</li> <li>Children should avoid outdoor areas where ash is visibly present and wash hands frequently after playing outdoors.</li> <li>When cleaning, wet down surfaces, clean outdoors when possible, and have rest periods away from high ash/dust areas.</li> </ul>
Moderate	4-6	Consider reducing or rescheduling strenuous activities outdoors if you are experiencing symptoms	No need to modify your usual outdoor activities unless you experience symptoms such as coughing and throat irritation	<ul style="list-style-type: none"> <li>Review AQHI messaging and assess if you are experiencing signs and symptoms</li> <li>When cleaning, wet down surfaces, clean outdoors when possible, and have rest periods away from high ash/dust areas.</li> </ul>
High	7-10	Reduce or reschedule strenuous activities outdoors. Children and the elderly should also take it easy.  Individuals with respiratory or cardiovascular conditions should monitor themselves and their family members for changes in their symptoms and take precautions as recommended by their physician.	Consider reducing or rescheduling strenuous activities outdoors if you experience symptoms such as coughing and throat irritation	<ul style="list-style-type: none"> <li>Reduce activity and increase rest periods.</li> <li>If you are noticing adverse health impacts, seek medical advice.</li> <li>Shelter in place and close windows, doors and fresh air intakes.</li> <li>Have a clean air room in your home where doors, windows are kept closed and air conditioners can be put on to recirculate.</li> <li>Avoid combustion activities like gas stoves smoking and the use of cleaners or paint that can increase indoor air pollution.</li> <li>Consider visiting friends or family in another area where the smoke impact is less.</li> <li>Do not evacuate unless directed to do by local authorities.</li> </ul>
Very High	>10	Avoid strenuous activities. Children and the elderly should also avoid outdoor physical exertion.	Reduce or reschedule strenuous activities outdoors, especially if you experience symptoms such as coughing and throat irritation.	<ul style="list-style-type: none"> <li>Review protective actions listed above.</li> <li>Use personal protective equipment like masks or respirators as advised by health care professionals.</li> <li>Do not evacuate unless directed to do so by authorities.</li> </ul>