



450 – 1 Street SW
Calgary, Alberta T2P 5H1

Tel: (403) 920-2174
Fax: (403) 920-2347
Email: roselyn_chou@tcenergy.com

March 3, 2020

Filed Electronically

Canada Energy Regulator
Suite 210, 517 Tenth Avenue SW
Calgary, AB T2R 0A8

Attention: Ms. L. George, Secretary of the Commission

Dear Ms. George:

**Re: NOVA Gas Transmission Ltd. (NGTL)
Groundbirch Mainline Loop (Saturn Section) and
Saddle Hills Compressor Station B4 Unit Addition (Project)
Project Notification**

In accordance with the Canada Energy Regulator (CER) Interim Filing Guidance and Early Engagement Guide, please see the attached Project Notification for the Project.

If the CER requires additional information with respect to this filing, please contact me by phone at (403) 920-2174 or by email at roselyn_chou@tcenergy.com.

Yours truly,
NOVA Gas Transmission Ltd.

Original signed by

Roselyn Chou
Regulatory Project Manager
Regulatory Facilities, Canadian Natural Gas Pipelines

Enclosure

PROJECT NOTIFICATION FORM TO THE CANADA ENERGY REGULATOR

PROPOSED PROJECT

Company Legal Name:	NOVA Gas Transmission Ltd.
Project Name:	Groundbirch Mainline Loop (Saturn Section) and Saddle Hills Compressor Station B4 Unit Addition (Project)
Expected Application Submission Date:	May 5, 2020

COMPANY CONTACT

Project Contact:	Roselyn Chou
Email Address:	roselyn_chou@tcenergy.com
Title (optional):	Regulatory Project Manager
Address:	450 – 1 Street SW Calgary, AB T2P 5H1
Phone:	(403) 920-2174
Fax:	(403) 920-2347

PROJECT DETAILS

The Groundbirch Mainline Loop (Saturn Section) and Saddle Hills Compressor Station B4 Unit Addition (collectively, the Project) consists of two components. The following information provides the proposed location, scope, timing and duration of construction for the Project.

The **Saturn Section** consists of approximately 23 km of NPS 42 pipe, located on 58% Crown and 42% freehold land from a tie-in location within NW 21-080-20 W6M and ending within NW 02-079-19 W6M, approximately 5 km northeast of Groundbirch, British Columbia. The Project will require new permanent land rights and temporary work space is anticipated to be required for the construction of the Project.

Anticipated construction start: 12/2021

Anticipated construction completion: 10/2022

Planned in-service date: 11/2022

The **Saddle Hills Compressor Station B4 Unit Addition** (Saddle Hills CS) component of the Project is located on Crown land in Alberta at SE 05-079-09 W6M on NGTL's

existing Saddle Hills Compressor Station site, approximately 11 km east of Gordondale, Alberta. The installation consists of one 30 MW unit addition and yard piping up to NPS 48. The Saddle Hills CS will also require a temporary camp on previously disturbed freehold land located within NGTL’s existing lease at SW 16-079-09 W6M.

Anticipated construction start: 07/2021
Anticipated construction completion: 10/2022
Planned in-service date: 11/2022

PROJECT MAP(S)

Please see Attachment 1 – Global and Regional Maps.

POTENTIALLY AFFECTED PARTIES

The following tables provide a preliminary list of potentially affected Indigenous groups and other potentially affected persons and communities for the Project, based upon the guidance for Step 1 in the CER’s Early Engagement Guide.

Landowners/Land Users and Other Potentially Affected Parties

Potentially Affected Party	Organization Name and/or Number of Potentially Affected Parties	
	GBML Loop Saturn Section	Saddle Hills Compressor Station Unit Addition
Landowner(s) – Freehold	13	0
Landowner(s) – Crown	1 – British Columbia Oil and Gas Commission (BCOGC)	1 – Alberta Environment and Parks (AEP)
Occupant(s)	6	1
Adjacent/Nearby Landowner(s)	35	1
Land User(s)	15	1

Indigenous Groups¹

Indigenous Group		GBML Loop Saturn Section	Saddle Hills Compressor Station Unit Addition
First Nations, Treaty 6	Enoch Cree Nation		X
	O'Chiese First Nation		X
First Nations, Treaty 8	Blueberry River First Nations	X	
	Doig River First Nations	X	X
	Duncan's First Nation		X
	Halfway River First Nation	X	
	Horse Lake First Nation	X	X
	McLeod Lake Indian Band	X	
	Saulteau First Nations	X	
	Sucker Creek First Nation		X
	West Moberly First Nations	X	
Non-Treaty First Nations	Kelly Lake Cree Nation	X	X
	Kelly Lake First Nation	X	X
Métis Organizations, Settlements, and Locals	British Columbia Métis Federation	X	
	Buffalo Lake Métis Settlement		X
	Dawson Creek Métis Federation	X	
	East Prairie Métis Settlement		X
	Elizabeth Métis Settlement		X
	Fishing Lake Métis Settlement		X
	Gift Lake Métis Settlement		X
	Kelly Lake Métis Settlement Society	X	X
	Kikino Métis Settlement		X
	Métis Nation of Alberta		X
	Métis Nation of Alberta Region 6		X
	Métis Nation of British Columbia	X	
	Métis Settlements General Council		X
	Mocassin Flat Métis Society	X	
	North East Métis Association	X	
	Paddle Prairie Métis Settlement		X
Peavine Métis Settlement		X	

Note:

1. This list includes the CER's preliminary list of potentially impacted Indigenous groups for the Project. NGTL received this list from the CER on January 17, 2020.

Government Authorities

Potentially Affected Party	Organization Name and/or Number of Potentially Affected Parties	
	GBML Loop Saturn Section	Saddle Hills Compressor Station Unit Addition
Municipalities and/or Counties	Peace River Regional District (British Columbia) <ul style="list-style-type: none"> • City of Dawson Creek • District of Chetwynd • City of Fort St. John 	Saddle Hills County (Alberta) <ul style="list-style-type: none"> • Settlement of Bay Tree • Settlement of Gordondale • Hamlet of Woking
Federal and/or Provincial Government(s)	<ul style="list-style-type: none"> • BC Ministry of Energy, Mines and Petroleum • BC Ministry of Forests, Lands, Natural Resources, Operations and Rural Development • BC Agricultural Land Commission • BC Oil and Gas Commission • BC Ministry of Transportation and Infrastructure (MOTI) • Environment and Climate Change Canada • Fisheries and Oceans Canada 	<ul style="list-style-type: none"> • Alberta Environment and Parks (AEP) • Alberta Culture, Multiculturalism and Status of Women (ACMSW) • Environment and Climate Change Canada

POTENTIAL IMPACTS RELATED TO THE PROJECT

The following potential impacts related to the Project have been identified by NGTL and have been or may be communicated to potentially affected persons and communities:

Project Activity	Potential Impacts
Construction	<ul style="list-style-type: none"> • Temporary workspace and access • Noise and visual impacts • Traffic management • Watercourse crossings • Workforce accommodation planning
Environmental Matters	<ul style="list-style-type: none"> • Soil quality/terrain • Vegetation • Water quality and wetland function • Fish habitat • Wildlife • Species at risk • Air quality and GHG emissions
Community Matters	<ul style="list-style-type: none"> • Traffic management • Potential effects on community infrastructure and resources • Potential effects on recreational land user groups
Indigenous Matters	<ul style="list-style-type: none"> • Potential effects on Indigenous rights and interests
Economic Matters	<ul style="list-style-type: none"> • Local contracting and hiring opportunities • Local economic spend within the community
Land Matters	<ul style="list-style-type: none"> • Land acquisition • Third party considerations • Planned land use after construction
Emergency Response	<ul style="list-style-type: none"> • Pipeline integrity and monitoring • Emergency preparedness and response

ISSUES RAISED BY POTENTIALLY AFFECTED PARTIES AND STATUS

NGTL's approach to ongoing consultation and engagement with stakeholders, landowners and Indigenous groups is designed to inform and to address issues or disputes to reach a mutual resolution or mitigate effects. NGTL's preferred method for addressing the concerns of stakeholders, landowners and Indigenous groups is through direct and respectful discussion. Issues received or identified during these discussions are systematically tracked and followed up on to promote mutual resolution and positive interest-based outcomes.

Landowners/Land Users and Other Potentially Affected Parties

NGTL's initial engagement with potentially affected landowners and occupants began in August 2019, when it conducted one-on-one meetings to obtain survey access for preliminary investigations of the areas. Though Project specifics were not finalized at the time, early engagement and understanding of stakeholder concerns and feedback was gathered and incorporated into Project planning. During early investigation of pipeline routing in the Peace River Regional District, NGTL contacted the municipal office in October 2019 and provided a message to be posted on the municipality's social media page, to notify the community of the presence of early survey crews working in the area. NGTL provided contact information for stakeholders to contact NGTL with questions.

NGTL began to distribute early information packages and Project information to potentially affected stakeholders in the fourth quarter of 2019. In the first quarter of 2020, NGTL began public engagement for the Project using project information packages that included a Project Fact Sheet, Project overview maps, and additional TC Energy brochures. NGTL followed up with key stakeholders and offered one-on-one meetings with potentially affected landowners, occupants and stakeholders to review Project specifics.

Indigenous Groups

NGTL's initial engagement with Indigenous groups began in November 2019 by providing an early information package to those Indigenous groups identified by NGTL as potentially affected by the Project. During the first quarter of 2020, NGTL sent a Project information package to all Indigenous groups identified in the preceding table, including Indigenous groups identified by the CER as potentially affected by the Project. The information package included an introductory letter, a Project Fact Sheet and Project overview maps, TC Energy's Indigenous Relations Policy brochure, TC Energy informational brochures, as well as information on the CER's process for project applications that do not involve a hearing. In addition to sharing the information noted

above, engagement to date has also included one-on-one meetings with Indigenous groups to review Project specifics and address any questions.

List of Issues Raised

The following tables provides a list of the issues, questions or concerns raised by potentially affected landowners, stakeholders and Indigenous groups with respect to the Project to date by Project component.

Saturn Section	
Description of Issues/Topics Raised	Status of Resolution
Workforce Accommodation Planning – camps versus Live Out Allowance (LOA) Model in Dawson Creek	NGTL will share workforce accommodation plans with City of Dawson Creek once determined by Prime Contractor.
Disturbance to wetland and watercourse crossings, including potential impacts to medicinal plants	NGTL is working with the interested Indigenous groups to schedule review(s) of the proposed route and facilitate field studies for areas of interest. As engagement continues, NGTL will provide its responses to these concerns and proposed mitigation measures and offer to answer questions or discuss any remaining concerns.
Cumulative effects	NGTL will continue to engage with Indigenous groups to learn more about concerns and follow up with appropriate mitigations. Cumulative effects are considered in the Environmental and Socio-Economic Assessment.

Saddle Hills Compressor Station B4 Unit Addition	
Description of Issues/Topics Raised	Status of Resolution
Workforce Accommodation Planning - Camp	NGTL will share workforce accommodation plans with Saddle Hills County once determined by Prime Contractor.
Clubroot mitigation	NGTL will further discuss clubroot mitigation concerns with Saddle Hills County.

DESCRIPTION OF LAND ACQUISITION PROCESS

NGTL will acquire the required freehold land rights using right-of-way agreements, beginning in the second quarter of 2020. NGTL will apply to both the BCOGC and AEP for the Crown land rights. NGTL will continue ongoing discussions with tenure holders and landowners to finalize the necessary agreements/consents.

NGTL confirms that the land acquisition process for the Project will comply with the applicable sections of the CER Act, including sections 321 and 322. Landowners will be

notified of the timing of the section 214 Application and their ability to participate in the CER process, consistent with the information contained in the section 322 notice.

In addition, temporary work space (TWS) is anticipated to be required for construction of the Project. Within British Columbia, for any TWS on Crown land, NGTL will obtain approval under Section 39 of the *Land Act* (British Columbia) and will obtain TWS Agreements with freehold landowners. Should TWS be required for the Saddle Hills Compressor Station Unit addition, outside of NGTL's existing disposition, a Temporary Field Authorization will be obtained from AEP.

To date, no issues or concerns have been raised, with respect to the land acquisition for the Project. NGTL will acquire the necessary land rights prior to the scheduled commencement of construction.

DESCRIPTION OF ROUTE /SITE SELECTION METHODOLOGY

For both pipeline route and facility site selection, NGTL employs a systematic and thorough route selection process using a variety of tools, such as:

- desktop studies
- helicopter reconnaissance
- ground verification and field surveys
- engineering, geotechnical and environmental field studies

This selection process takes into account the objectives of minimizing the total route length or land requirements, meeting applicable regulatory requirements and reducing the environmental footprint, while carefully assessing overall cost and constructability, and meeting customer demands. Feedback received through the early engagement phase with stakeholders, landowners and Indigenous groups informs the assessment of proposed routes and sites.

Facility Sites – Compressor Station

The desktop and field studies completed for the Project by NGTL to date included consideration of the following factors:

- existing road access and proximity to utility power
- third-party infrastructure (rights-of-way, facilities, residences, etc.)
- natural features (rivers, water bodies, clearings, vegetation, slopes, etc.)
- considerations for customer pipe routing
- proximity of the site to nearby communities

- environmental sensitivities of the geographical area (Restricted Activity Periods, Key Wildlife Buffer Zones, migratory bird windows, wetlands, etc.)
- connections to existing pipeline mainlines and/or laterals
- proximity to noise receptors

Facility Sites Within Existing Disposition

Based upon NGTL's assessment of system and engineering requirements, the location of the proposed compressor station unit addition will be located within NGTL's existing disposition.

Pipeline Routing

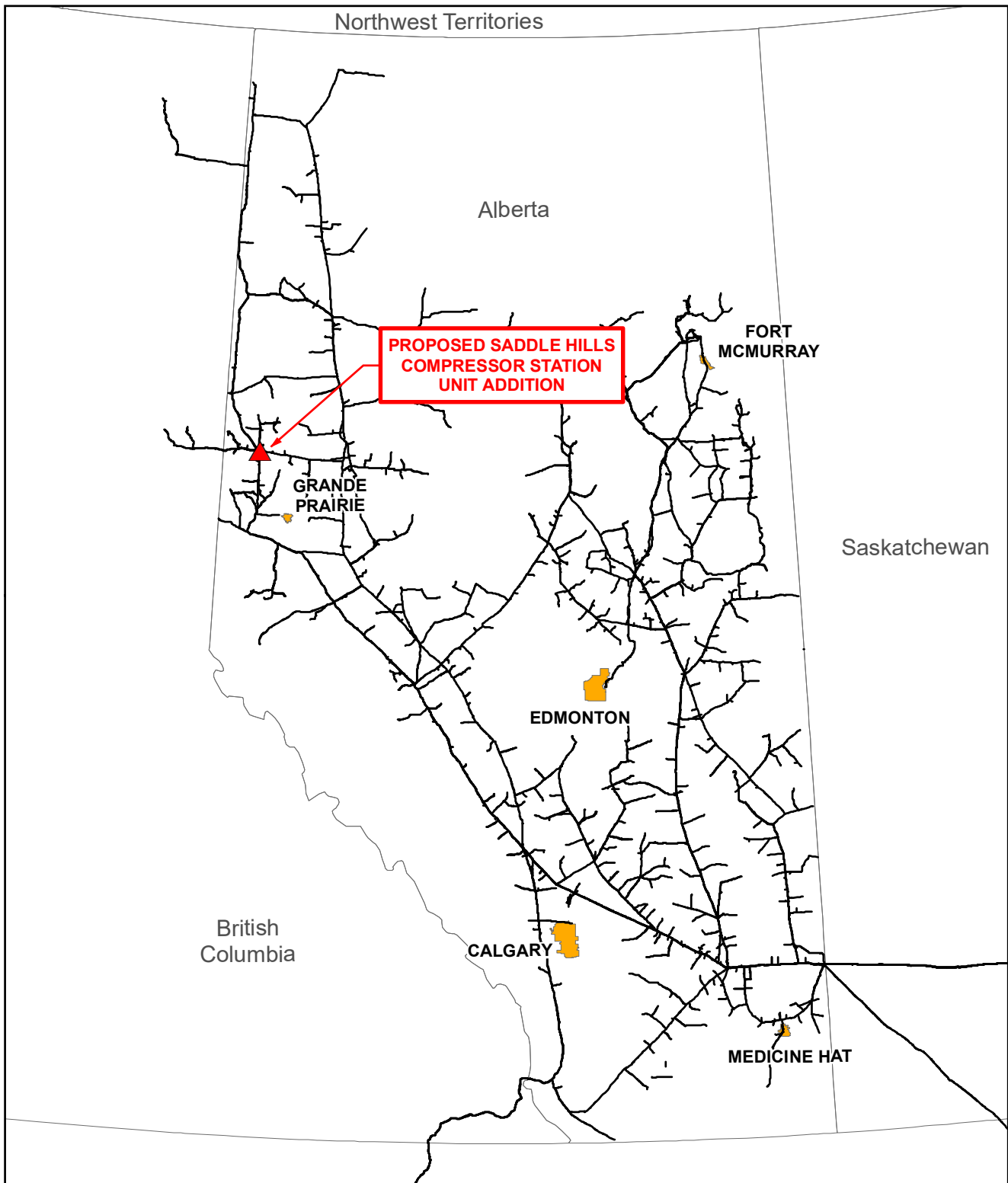
Specific to pipeline route selection, NGTL's route selection process considers and balances several criteria when evaluating route options, including the following, where practical or feasible:

- minimizing length to reduce overall environmental and socio-economic footprint
- ensuring pipeline sections and facilities are economical to construct and operate
- paralleling existing linear disturbances
- ensuring public safety
- minimizing the number, and ensuring the construction feasibility, of watercourse, road, rail and utility crossings
- considering and avoiding sensitive environmental features
- avoiding terrain subject to geotechnical issues such as areas of unstable slopes, problem soils, or known seismic activity
- avoiding lands of designated status, such as parks, protected areas, cemeteries and historic, archaeological or heritage sites
- avoiding concentrated areas of rural residences and urban developments
- considering input received from potentially affected landowners, stakeholders and Indigenous groups through various engagement activities

FEEDBACK RECEIVED ON ROUTE SELECTION DURING EARLY ENGAGEMENT

To date, potentially affected landowners, occupants and other stakeholders have not provided feedback specific to pipeline routing; however, NGTL will continue to engage with these groups to resolve any issues that may arise.

Early engagement with Indigenous groups has resulted in general feedback regarding watercourse crossings, wetlands, and medicinal plants. NGTL will continue to finalize the Project footprint in the coming months and delineate survey information to determine Project specifics. As information pertinent to these issues become available to NGTL, NGTL will continue to engage with Indigenous groups to provide greater detail on Project specifics, and resolve identified issues and offer mitigations where applicable.



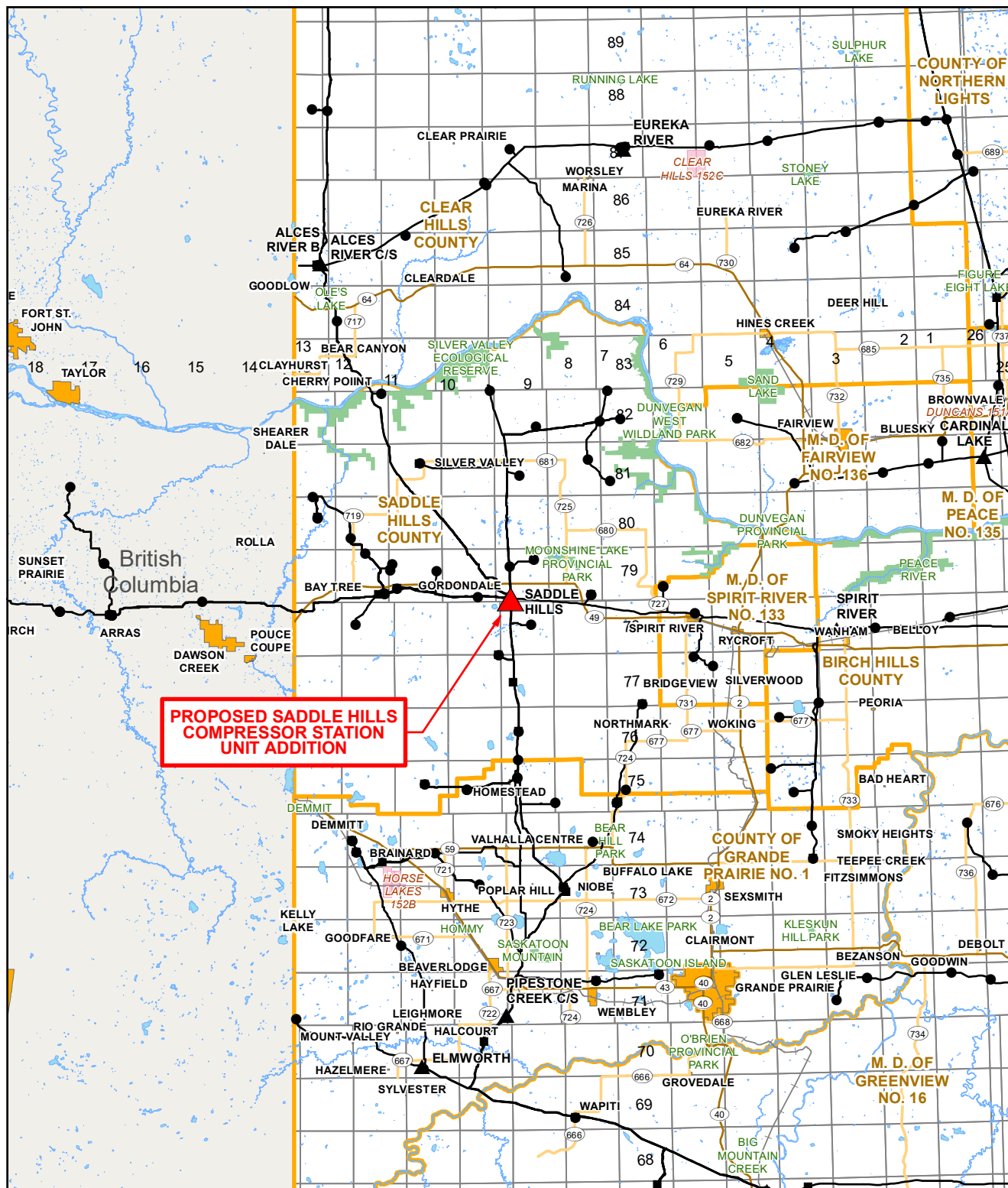
TERMS OF USE: The datasets used to create this map have been gathered from various sources for a specific purpose. TC Energy provides no warranty regarding the accuracy or completeness of the datasets. Unauthorized or improper use of this map, including supporting datasets is strictly prohibited. TC Energy accepts no liability whatsoever related to any loss or damages resulting from proper, improper, authorized or unauthorized use of this map and associated datasets and user expressly waives all claims relating to or arising out of use of or reliance on this map.

PROPOSED SADDLE HILLS COMPRESSOR STATION UNIT ADDITION		
Global		
CARTOGRAPHER:	EW	20-01-08
REVIEWER:	NJ	20-01-08
APPROVER:	NJ	20-01-08

- ▲ Saddle Hills CS
- Existing NGTL Pipeline
- City / Town



LOCATION: 55.815, -119.366	REVISION: 0	ISSUED DATE: 20-01-08
COORDINATE SYSTEM: NAD 1983 UTM Zone 11N		ISSUE PURPOSE: IFU
FILE NAME: T_0228_0003_01_00_SaddleHills_CS_Unit_Add_Fig1_rxd		

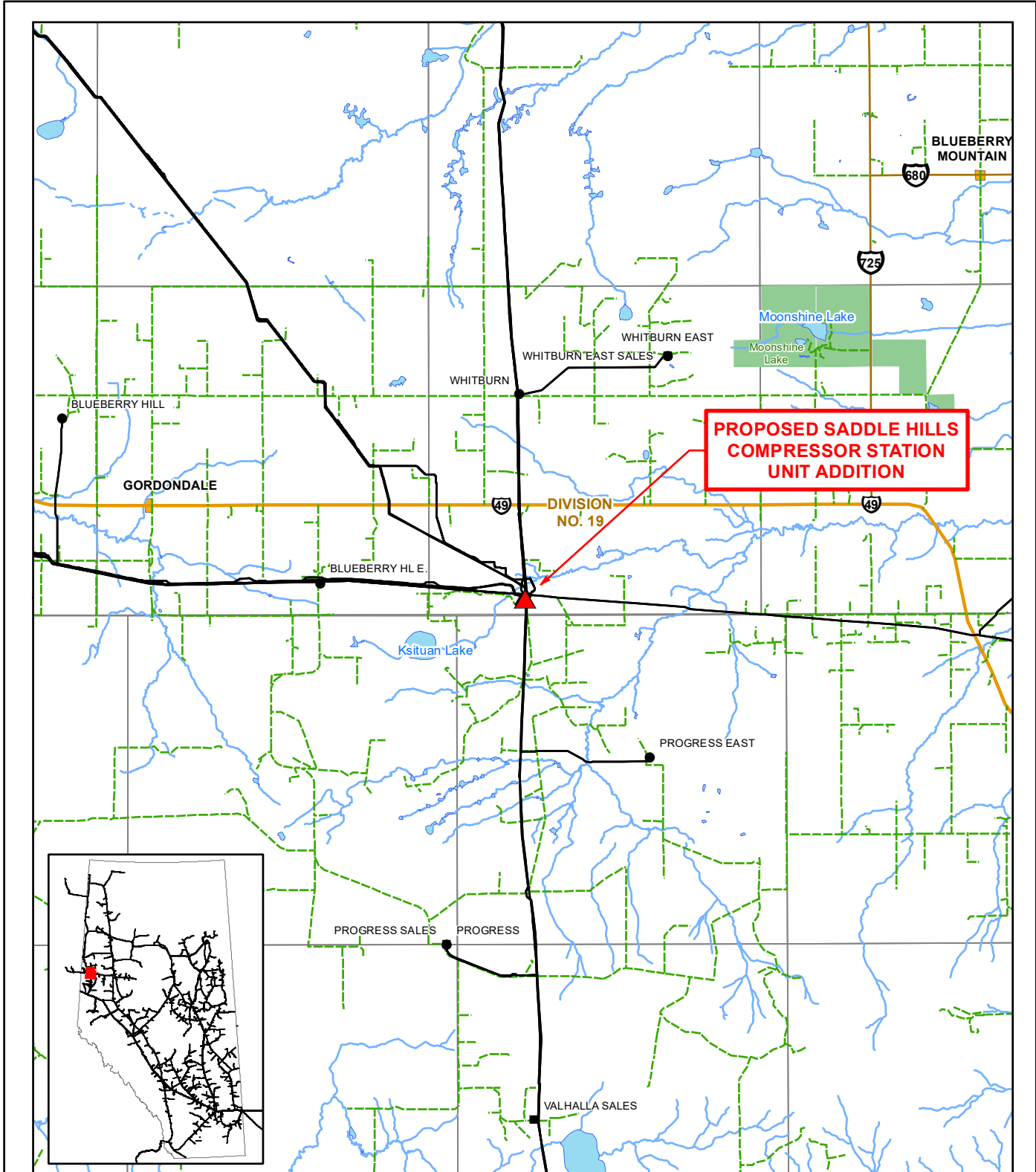


**PROPOSED SADDLE HILLS
 COMPRESSOR STATION
 UNIT ADDITION**

TERMS OF USE: The datasets used to create this map have been gathered from various sources for a specific purpose. TC Energy provides no warranty regarding the accuracy or completeness of the datasets. Unauthorized or improper use of this map, including supporting datasets is strictly prohibited. TC Energy accepts no liability whatsoever related to any loss or damages resulting from proper, improper, authorized or unauthorized use of this map and associated datasets and user expressly waives all claims relating to or arising out of use of or reliance on this map.

PROPOSED SADDLE HILLS COMPRESSOR STATION UNIT ADDITION							
					LOCATION: 55.815, -119.366	REVISION: 0	ISSUED DATE: 20-01-08
					COORDINATE SYSTEM: NAD 1983 UTM Zone 10N		
					MAP NUMBER: T_0228_0003_02_00_SaddlesHills_CS_Unit_Add_Fig1_rxd		
CARTOGRAPHER: EW	REVIEWER: NJ	APPROVER: NJ	0 5 10 20 30 40 km				
20-01-08	20-01-08	20-01-08	IFU				

Not all legend elements may appear on the map

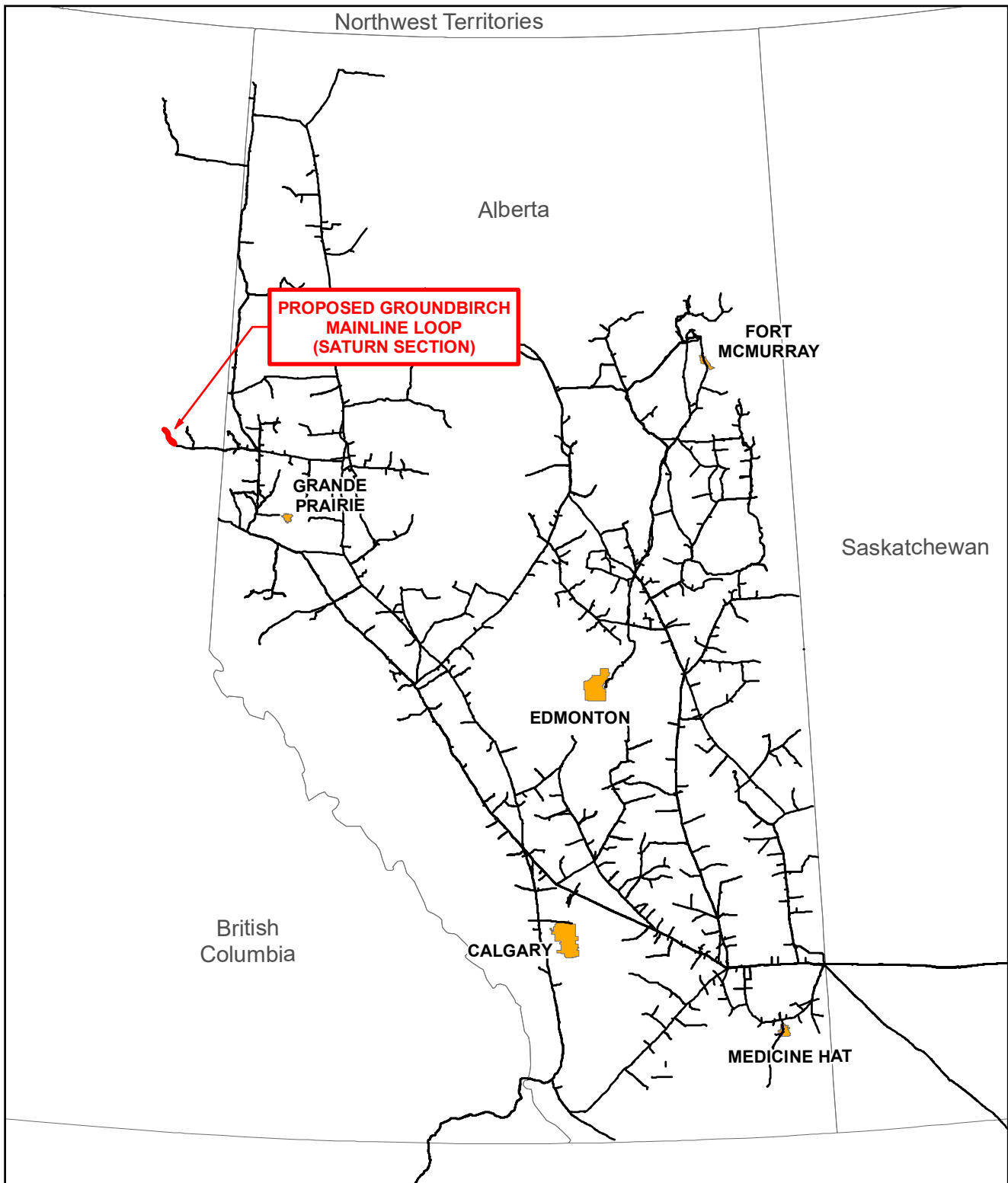


TERMS OF USE: The datasets used to create this map have been gathered from various sources for a specific purpose. TC Energy provides no warranty regarding the accuracy or completeness of the datasets. Unauthorized or improper use of this map, including supporting datasets is strictly prohibited. TC Energy accepts no liability whatsoever related to any loss or damages resulting from proper, improper, authorized or unauthorized use of this map and associated datasets and user expressly waives all claims relating to or arising out of use of or reliance on this map.

PROPOSED SADDLE HILLS COMPRESSOR STATION UNIT ADDITION			▲ Saddle Hills CS	—+— Railway	■ City / Town
Detail			▲ Compressor Station	— Gravel Road	■ River / Lake
CARTOGRAPHER:	EW	20-01-08	■ Delivery Meter Station	— Primary Highway	■ First Nation Land
REVIEWER:	NJ	20-01-08	● Receipt Meter Station	— Secondary Highway	■ Metis Settlement
APPROVER:	NJ	20-01-08	— TC Energy Pipeline		■ Protected Area
					■ Military Reserve
					■ County

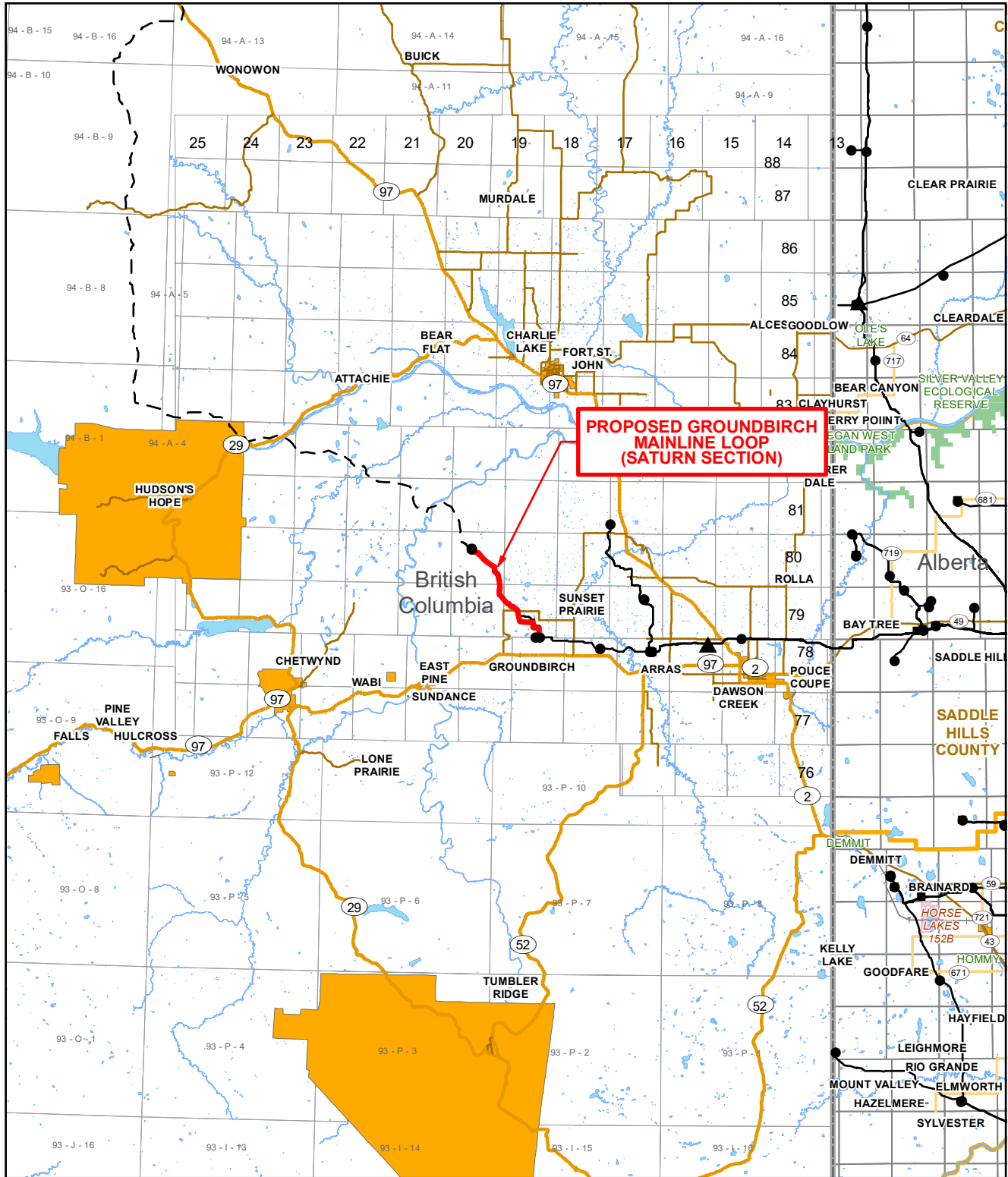
Not all legend elements may appear on the map

LOCATION: 55.815, -119.366	REVISION: 0	ISSUED DATE: 20-01-08
COORDINATE SYSTEM: NAD 1983 UTM Zone 11N		ISSUE PURPOSE: IFU
MAP NUMBER: T_0228_0003_03_00_SaddleHills_CS_Unit_Add_Fig1_rxd		



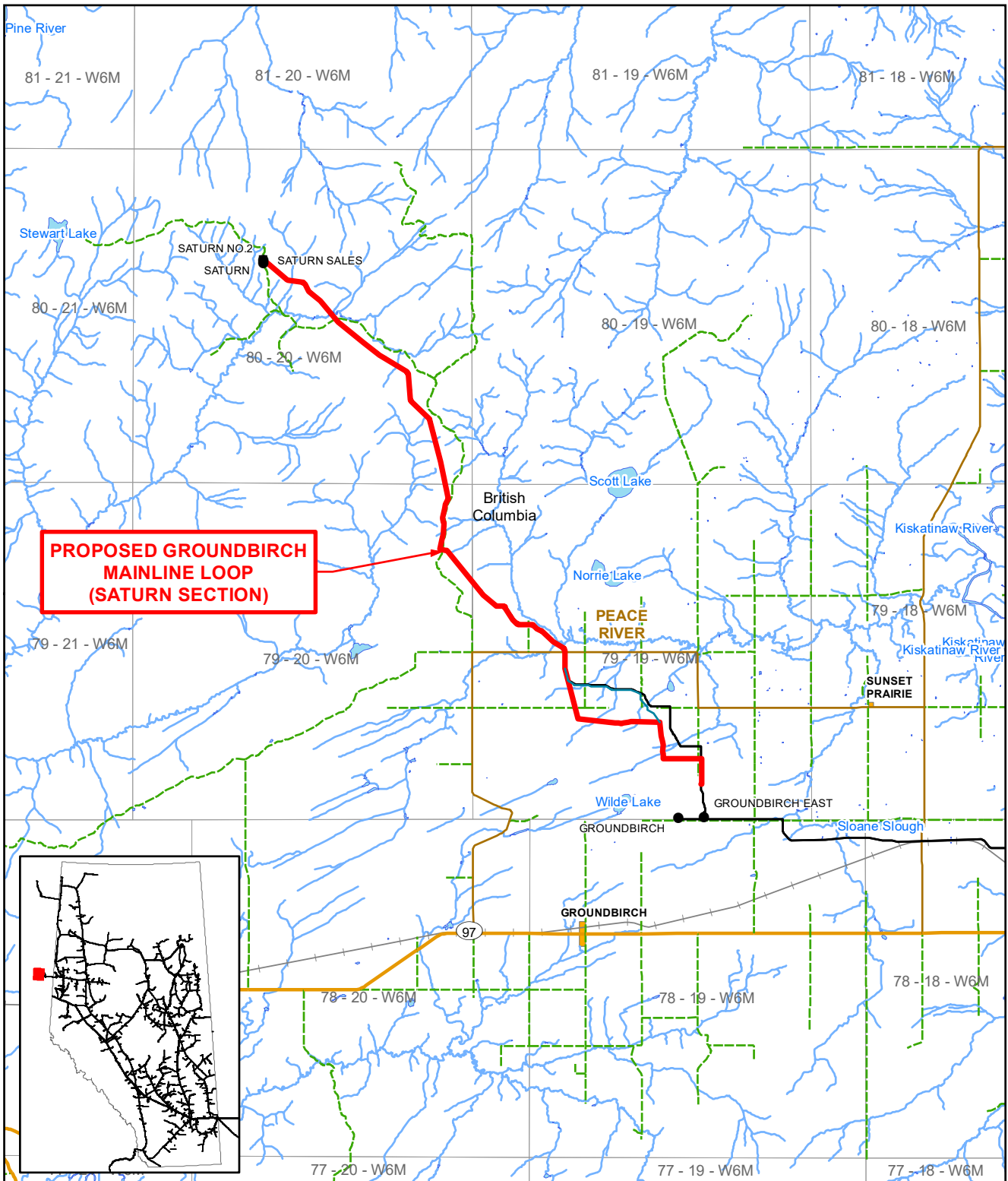
TERMS OF USE: The datasets used to create this map have been gathered from various sources for a specific purpose. TC Energy provides no warranty regarding the accuracy or completeness of the datasets. Unauthorized or improper use of this map, including supporting datasets is strictly prohibited. TC Energy accepts no liability whatsoever related to any loss or damages resulting from proper, improper, authorized or unauthorized use of this map and associated datasets and user expressly waives all claims relating to or arising out of use of or reliance on this map.

PROPOSED GROUNDBIRCH MAINLINE LOOP (SATURN SECTION)			Proposed Pipeline Existing NGTL Pipeline City / Town	 	LOCATION: 55.889, -120.989 COORDINATE SYSTEM: NAD 1983 UTM Zone 11N	REVISION: 0 ISSUED DATE: 20-01-08	ISSUE PURPOSE: IFU
Global			0 25 50 100 150 200 250 km 		FILE NAME: T_0228_0003_01_00_Saturn_Loop_Fig1_r.mxd		
CARTOGRAPHER:	EW	20-01-08					
REVIEWER:	NJ	20-01-08					
APPROVER:	NJ	20-01-08					



TERMS OF USE: The datasets used to create this map have been gathered from various sources for a specific purpose. TC Energy provides no warranty regarding the accuracy or completeness of the datasets. Unauthorized or improper use of this map, including supporting datasets is strictly prohibited. TC Energy accepts no liability whatsoever related to any loss or damages resulting from proper, improper, authorized or unauthorized use of this map and associated datasets and user expressly waives all claims relating to or arising out of use of or reliance on this map.

PROPOSED GROUNDBIRCH MAINLINE LOOP (SATURN SECTION)			Proposed Pipeline Compressor Station Delivery Meter Station Receipt Meter Station TCEnergy Pipeline	Railway Primary Highway Secondary Highway	River / Lake Protected Area City / Town First Nation Lands Metis Settlement Military Reserve County	N			
							LOCATION: 55.889, -120.989 REVISION: 0 ISSUED DATE: 20-01-08 COORDINATE SYSTEM: NAD 1983 UTM Zone 10N ISSUE PURPOSE: IFU 0 5 10 20 30 40 km MAP NUMBER: T_0228_0003_02_00_Saturn_Loop_Fig1_r.mxd		
Regional CARTOGRAPHER: EW 20-01-08 REVIEWER: NJ 20-01-08 APPROVER: NJ 20-01-08			Not all legend elements may appear on the map						



**PROPOSED GROUNDBIRCH
 MAINLINE LOOP
 (SATURN SECTION)**

TERMS OF USE: The datasets used to create this map have been gathered from various sources for a specific purpose. TC Energy provides no warranty regarding the accuracy or completeness of the datasets. Unauthorized or improper use of this map, including supporting datasets is strictly prohibited. TC Energy accepts no liability whatsoever related to any loss or damages resulting from proper, improper, authorized or unauthorized use of this map and associated datasets and user expressly waives all claims relating to or arising out of use of or reliance on this map.

PROPOSED GROUNDBIRCH MAINLINE LOOP (SATURN SECTION)			Proposed Pipeline	Railway	City / Town	N		
			Compressor Station	Gravel Road	River / Lake			
Detail			Delivery Meter Station	Primary Highway	First Nation Land	LOCATION: 55.889, -120.989	REVISION: 0	ISSUED DATE: 20-01-08
CARTOGRAPHER: EW	20-01-08	Receipt Meter Station	Secondary Highway	Metis Settlement	COORDINATE SYSTEM: NAD 1983 UTM Zone 11N	ISSUE PURPOSE: IFU		
REVIEWER: NJ	20-01-08	TCEnergy Pipeline	Protected Area	Military Reserve	MAP NUMBER: T_0228_0003_03_00_Saturn_Loop_Fig1_mxd			
APPROVER: NJ	20-01-08	Not all legend elements may appear on the map	County					