

**Project and Technical Update No. 4
Part 2
Appendix B: Overland Spill Mapping**

This document is provided by Kinder Morgan Canada Inc. (KMC), for use by the intended recipient only. This information is confidential and proprietary to KMC and is not to be provided to any other recipient without the written consent of KMC. It is not to be used for legal, engineering or surveying purposes, or for doing any work on or around KMC's pipelines and facilities, all of which require KMC's prior written approval.



TRANS MOUNTAIN

**OVERLAND AND STREAM FLOW MODELING
42" HARGREAVES TO BLUE RIVER
POTENTIAL FULL-BORE RUPTURE RELEASES, SCALE 1:25,000**

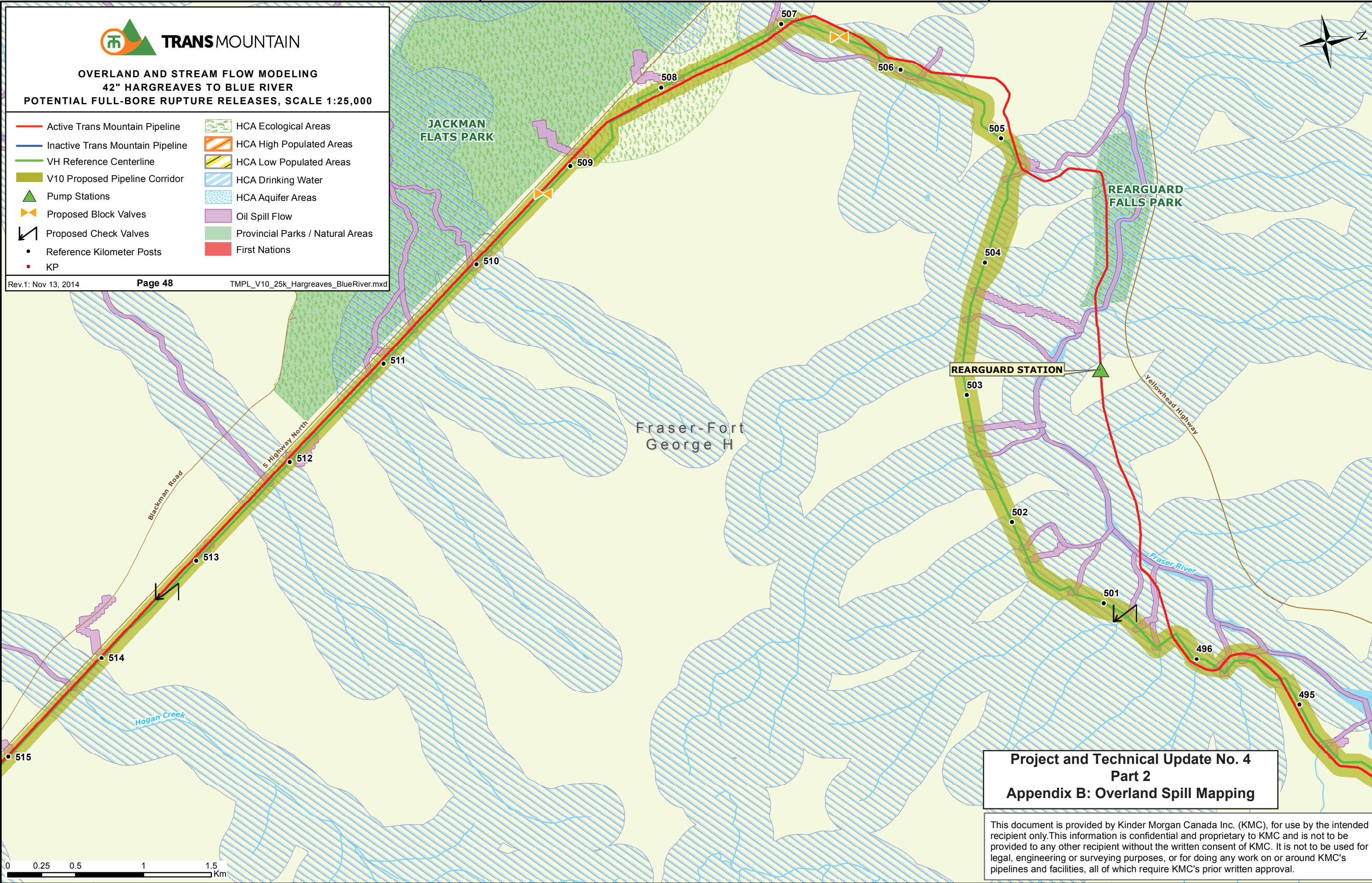
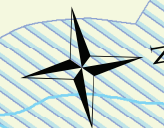
- | | |
|------------------------------------|----------------------------------|
| — Active Trans Mountain Pipeline | HCA Ecological Areas |
| — Inactive Trans Mountain Pipeline | HCA High Populated Areas |
| — VH Reference Centerline | HCA Low Populated Areas |
| — V10 Proposed Pipeline Corridor | HCA Drinking Water |
| Pump Stations | HCA Aquifer Areas |
| Proposed Block Valves | Oil Spill Flow |
| Proposed Check Valves | Provincial Parks / Natural Areas |
| • Reference Kilometer Posts | First Nations |
| • KP | |



OVERLAND AND STREAM FLOW MODELING
42" HARGREAVES TO BLUE RIVER
POTENTIAL FULL-BORE RUPTURE RELEASES, SCALE 1:25,000

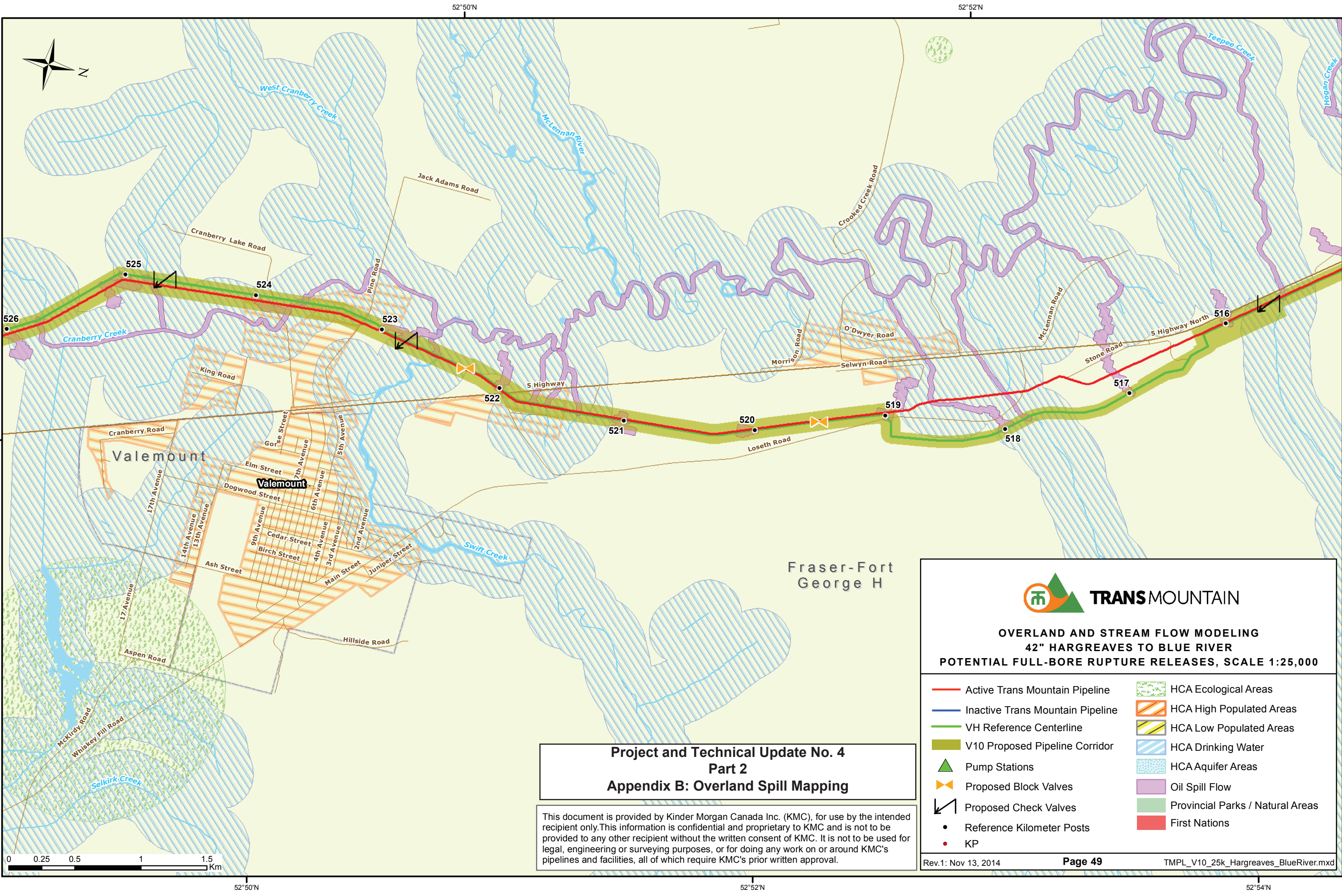
- | | |
|------------------------------------|------------------------------------|
| — Active Trans Mountain Pipeline | ▨ HCA Ecological Areas |
| — Inactive Trans Mountain Pipeline | ▨ HCA High Populated Areas |
| — VH Reference Centerline | ▨ HCA Low Populated Areas |
| ▨ V10 Proposed Pipeline Corridor | ▨ HCA Drinking Water |
| ▲ Pump Stations | ▨ HCA Aquifer Areas |
| ✕ Proposed Block Valves | ▨ Oil Spill Flow |
| ↙ Proposed Check Valves | ▨ Provincial Parks / Natural Areas |
| • Reference Kilometer Posts | ▨ First Nations |
| • KP | |

Rev.1: Nov 13, 2014 Page 48 TMPL_V10_25k_Hargreaves_BlueRiver.mxd



Project and Technical Update No. 4
Part 2
Appendix B: Overland Spill Mapping

This document is provided by Kinder Morgan Canada Inc. (KMC), for use by the intended recipient only. This information is confidential and proprietary to KMC and is not to be provided to any other recipient without the written consent of KMC. It is not to be used for legal, engineering or surveying purposes, or for doing any work on or around KMC's pipelines and facilities, all of which require KMC's prior written approval.



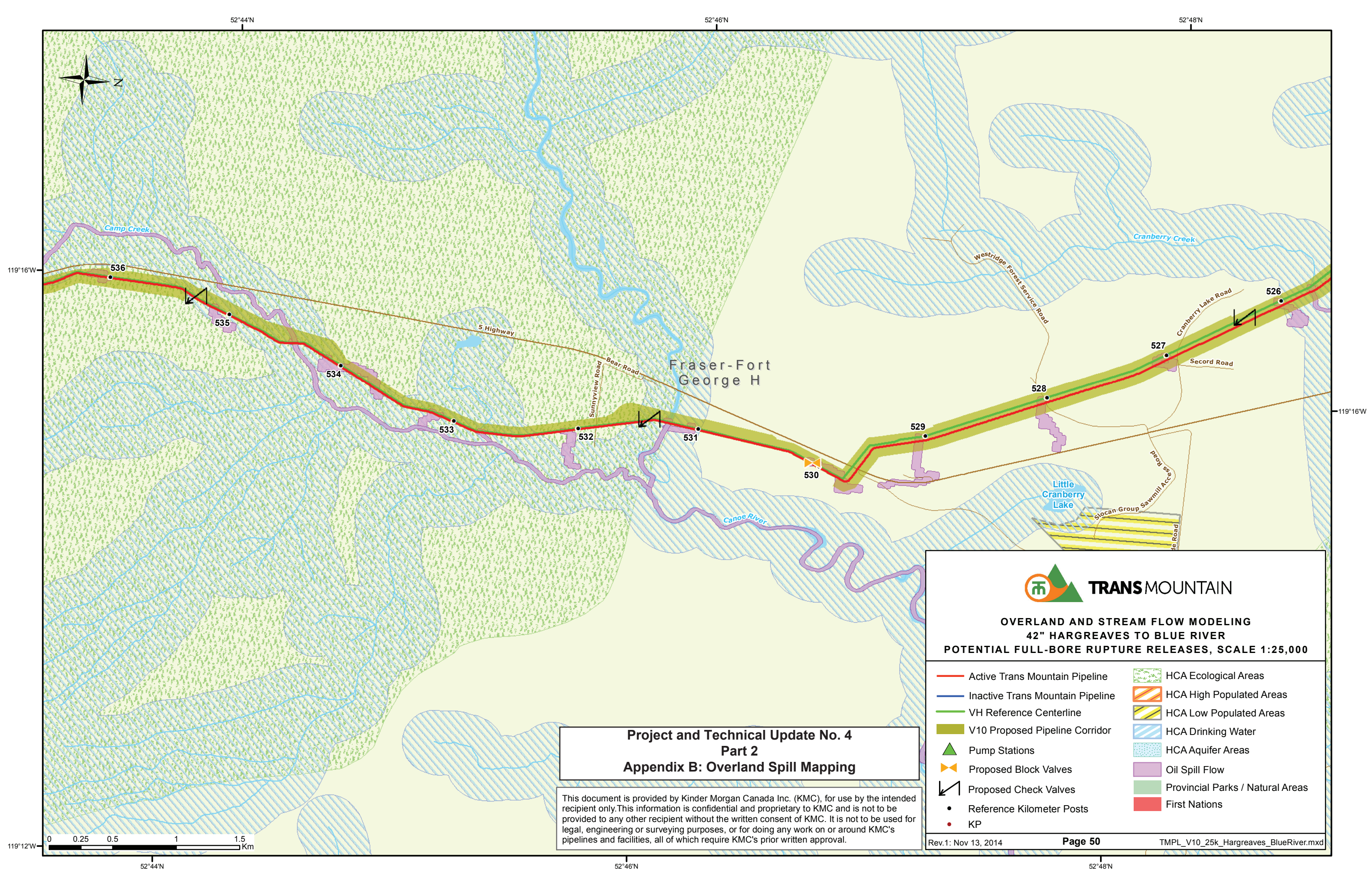
Project and Technical Update No. 4
Part 2
Appendix B: Overland Spill Mapping

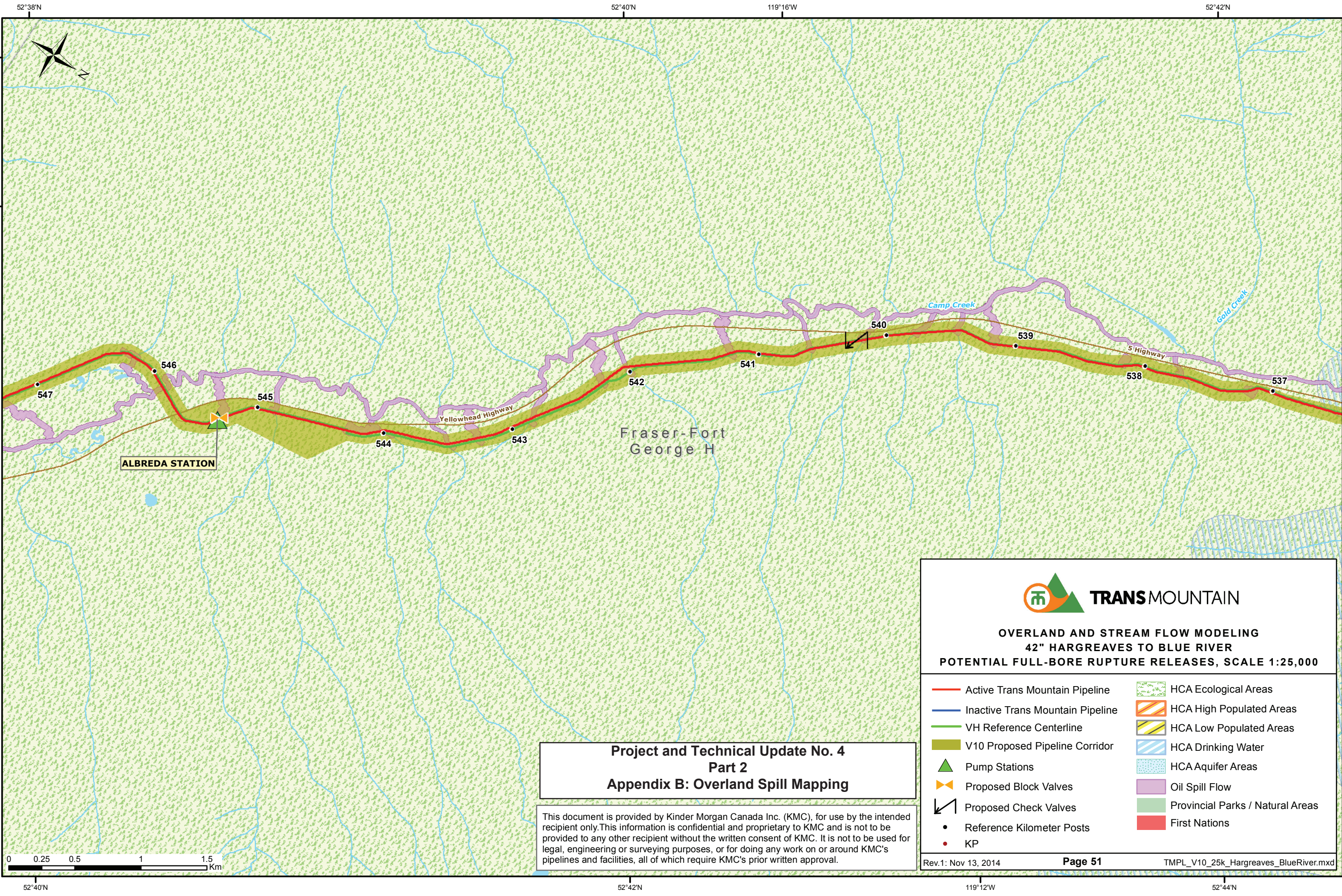
This document is provided by Kinder Morgan Canada Inc. (KMC), for use by the intended recipient only. This information is confidential and proprietary to KMC and is not to be provided to any other recipient without the written consent of KMC. It is not to be used for legal, engineering or surveying purposes, or for doing any work on or around KMC's pipelines and facilities, all of which require KMC's prior written approval.



OVERLAND AND STREAM FLOW MODELING
42" HARGREAVES TO BLUE RIVER
POTENTIAL FULL-BORE RUPTURE RELEASES, SCALE 1:25,000

- | | |
|------------------------------------|------------------------------------|
| — Active Trans Mountain Pipeline | ■ HCA Ecological Areas |
| — Inactive Trans Mountain Pipeline | ■ HCA High Populated Areas |
| — VH Reference Centerline | ■ HCA Low Populated Areas |
| ■ V10 Proposed Pipeline Corridor | ■ HCA Drinking Water |
| ▲ Pump Stations | ■ HCA Aquifer Areas |
| ✕ Proposed Block Valves | ■ Oil Spill Flow |
| ↘ Proposed Check Valves | ■ Provincial Parks / Natural Areas |
| • Reference Kilometer Posts | ■ First Nations |
| • KP | |





Project and Technical Update No. 4
Part 2
Appendix B: Overland Spill Mapping

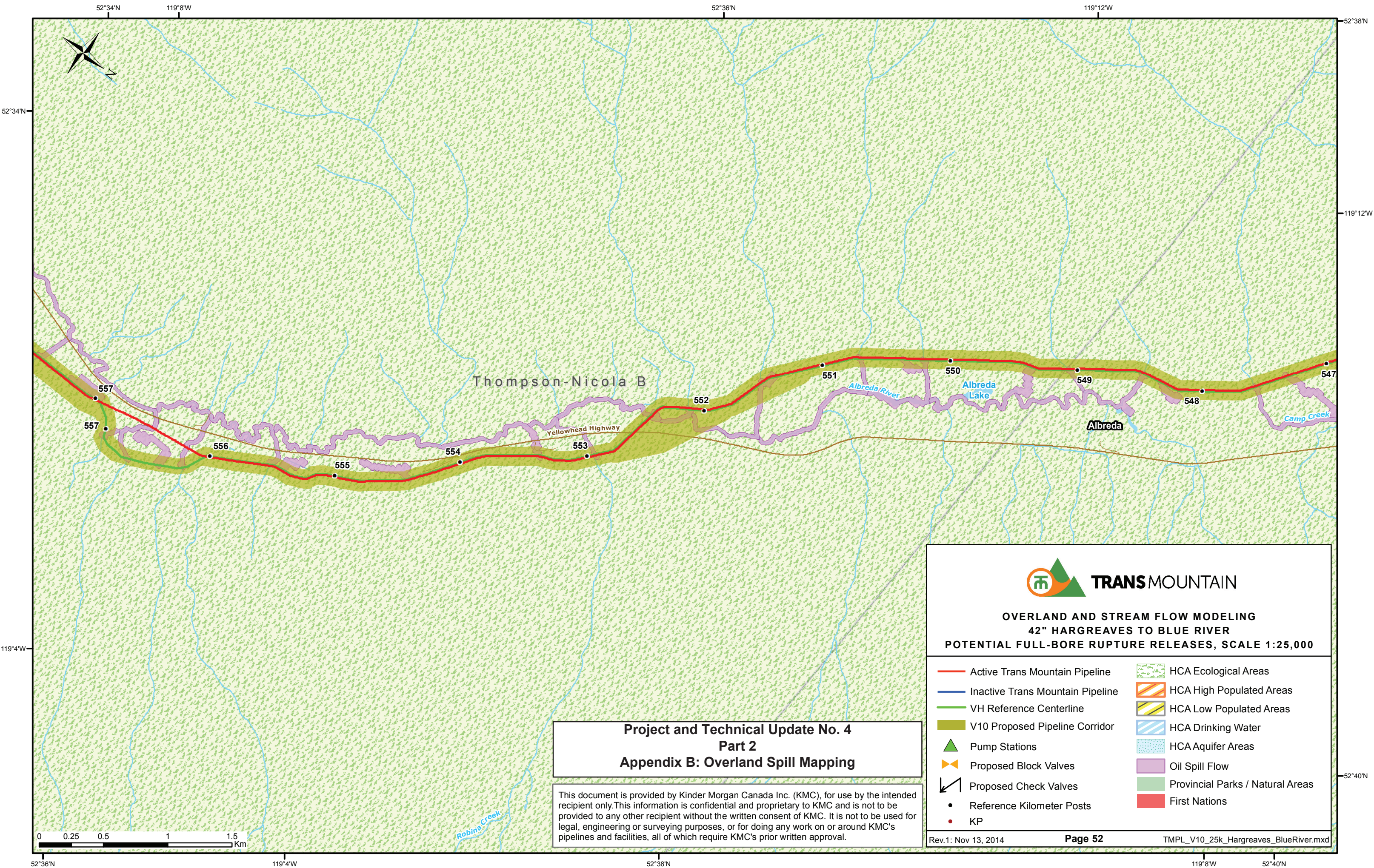
This document is provided by Kinder Morgan Canada Inc. (KMC), for use by the intended recipient only. This information is confidential and proprietary to KMC and is not to be provided to any other recipient without the written consent of KMC. It is not to be used for legal, engineering or surveying purposes, or for doing any work on or around KMC's pipelines and facilities, all of which require KMC's prior written approval.

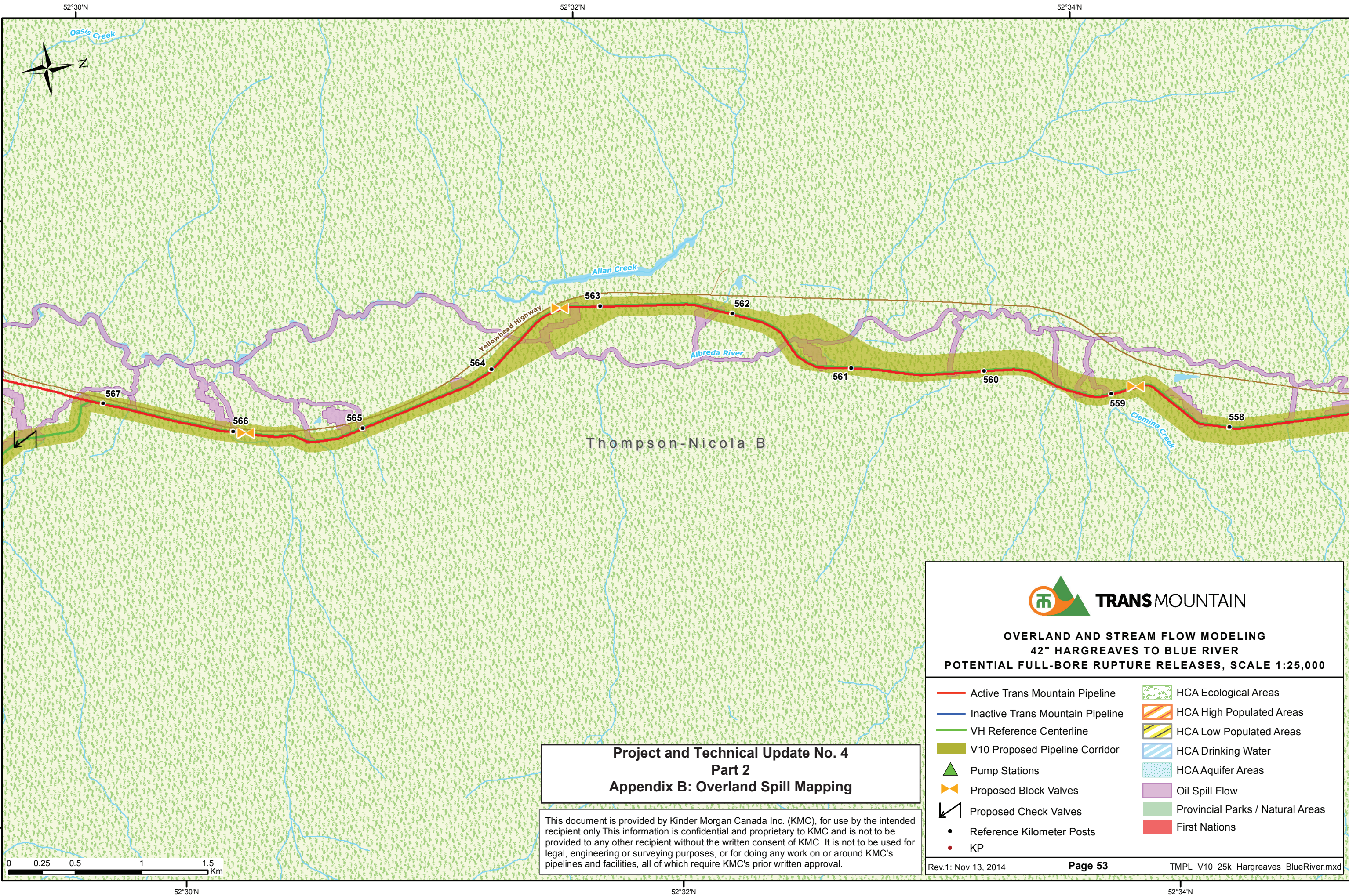


TRANS MOUNTAIN

OVERLAND AND STREAM FLOW MODELING
42" HARGREAVES TO BLUE RIVER
POTENTIAL FULL-BORE RUPTURE RELEASES, SCALE 1:25,000

- | | |
|----------------------------------|----------------------------------|
| Active Trans Mountain Pipeline | HCA Ecological Areas |
| Inactive Trans Mountain Pipeline | HCA High Populated Areas |
| VH Reference Centerline | HCA Low Populated Areas |
| V10 Proposed Pipeline Corridor | HCA Drinking Water |
| Pump Stations | HCA Aquifer Areas |
| Proposed Block Valves | Oil Spill Flow |
| Proposed Check Valves | Provincial Parks / Natural Areas |
| Reference Kilometer Posts | First Nations |
| KP | |





Project and Technical Update No. 4
Part 2
Appendix B: Overland Spill Mapping

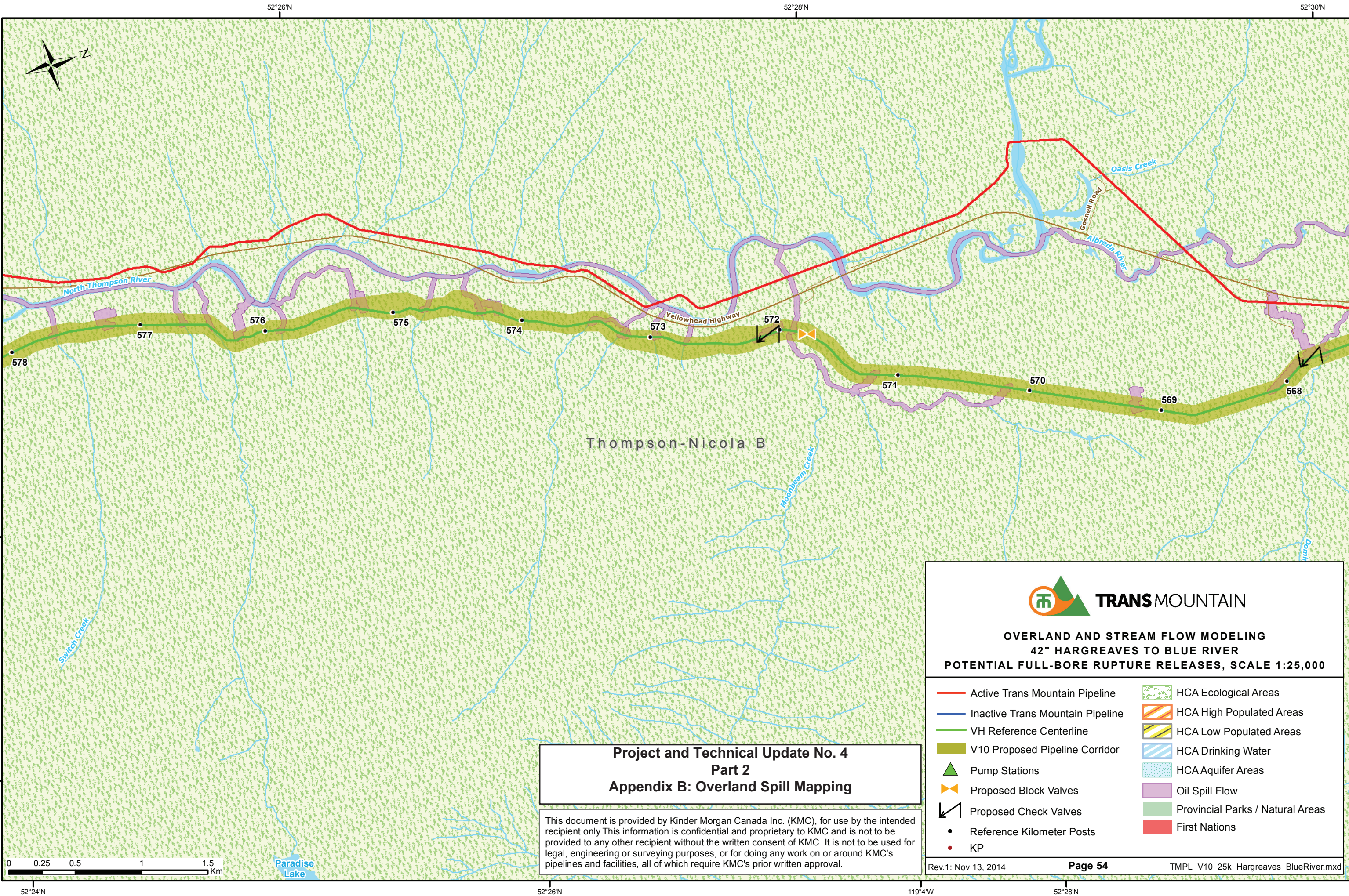
This document is provided by Kinder Morgan Canada Inc. (KMC), for use by the intended recipient only. This information is confidential and proprietary to KMC and is not to be provided to any other recipient without the written consent of KMC. It is not to be used for legal, engineering or surveying purposes, or for doing any work on or around KMC's pipelines and facilities, all of which require KMC's prior written approval.



TRANS MOUNTAIN

OVERLAND AND STREAM FLOW MODELING
42" HARGREAVES TO BLUE RIVER
POTENTIAL FULL-BORE RUPTURE RELEASES, SCALE 1:25,000

- | | |
|------------------------------------|----------------------------------|
| — Active Trans Mountain Pipeline | HCA Ecological Areas |
| — Inactive Trans Mountain Pipeline | HCA High Populated Areas |
| — VH Reference Centerline | HCA Low Populated Areas |
| V10 Proposed Pipeline Corridor | HCA Drinking Water |
| Pump Stations | HCA Aquifer Areas |
| Proposed Block Valves | Oil Spill Flow |
| Proposed Check Valves | Provincial Parks / Natural Areas |
| Reference Kilometer Posts | First Nations |
| KP | |



Project and Technical Update No. 4
Part 2
Appendix B: Overland Spill Mapping

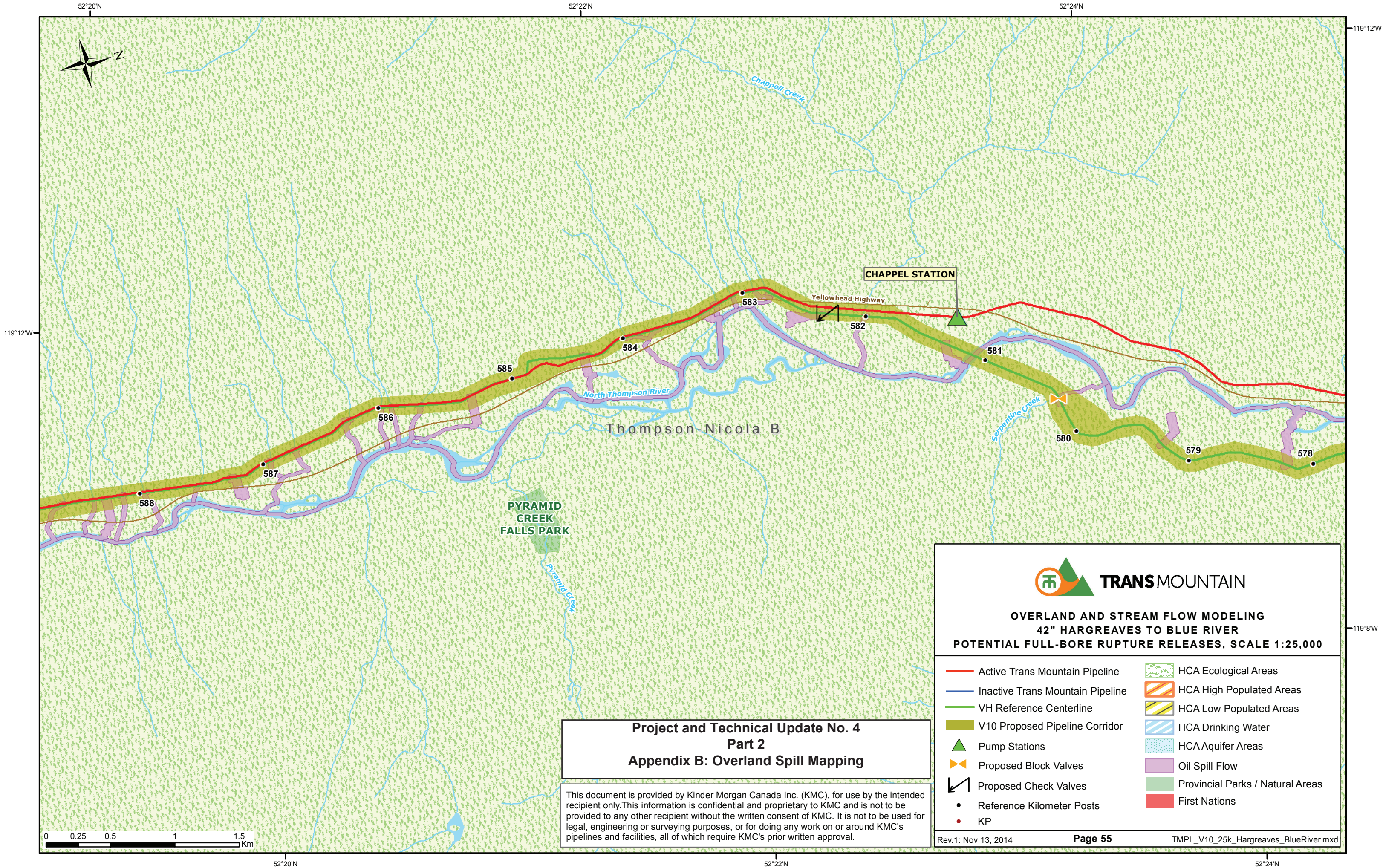
This document is provided by Kinder Morgan Canada Inc. (KMC), for use by the intended recipient only. This information is confidential and proprietary to KMC and is not to be provided to any other recipient without the written consent of KMC. It is not to be used for legal, engineering or surveying purposes, or for doing any work on or around KMC's pipelines and facilities, all of which require KMC's prior written approval.

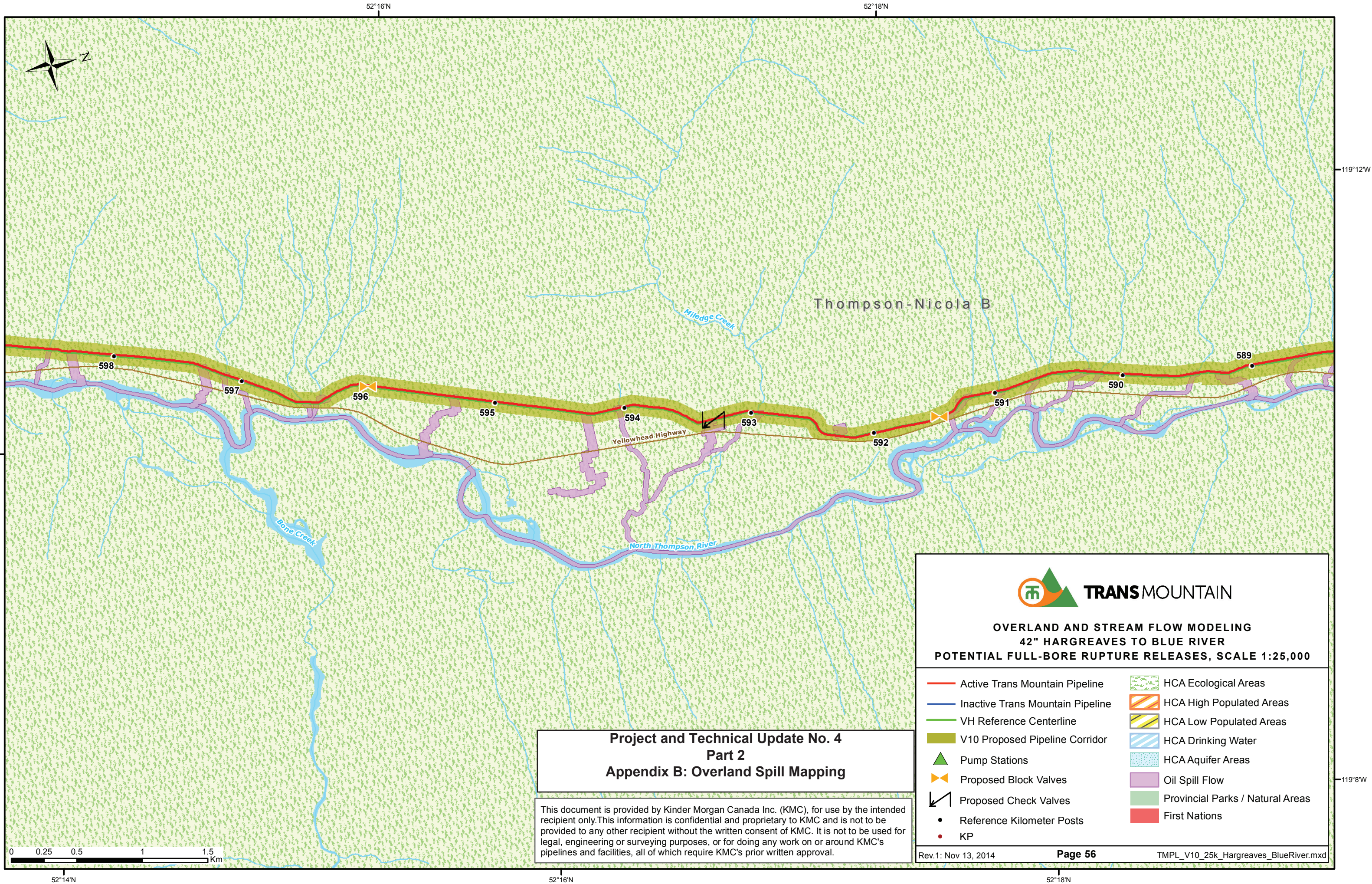


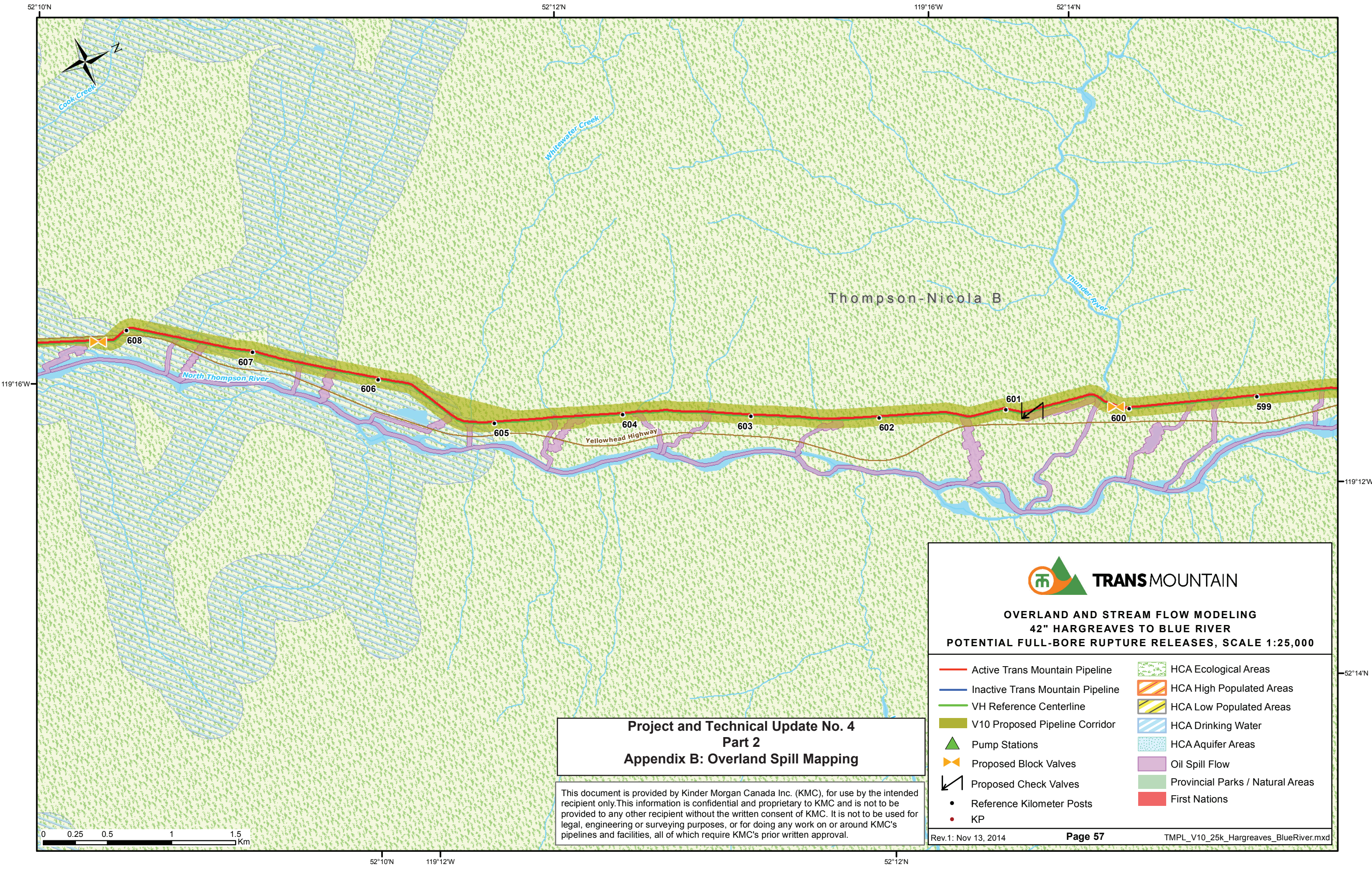
OVERLAND AND STREAM FLOW MODELING
42" HARGREAVES TO BLUE RIVER
POTENTIAL FULL-BORE RUPTURE RELEASES, SCALE 1:25,000

- | | |
|------------------------------------|----------------------------------|
| — Active Trans Mountain Pipeline | HCA Ecological Areas |
| — Inactive Trans Mountain Pipeline | HCA High Populated Areas |
| — VH Reference Centerline | HCA Low Populated Areas |
| V10 Proposed Pipeline Corridor | HCA Drinking Water |
| Pump Stations | HCA Aquifer Areas |
| Proposed Block Valves | Oil Spill Flow |
| Proposed Check Valves | Provincial Parks / Natural Areas |
| Reference Kilometer Posts | First Nations |
| KP | |









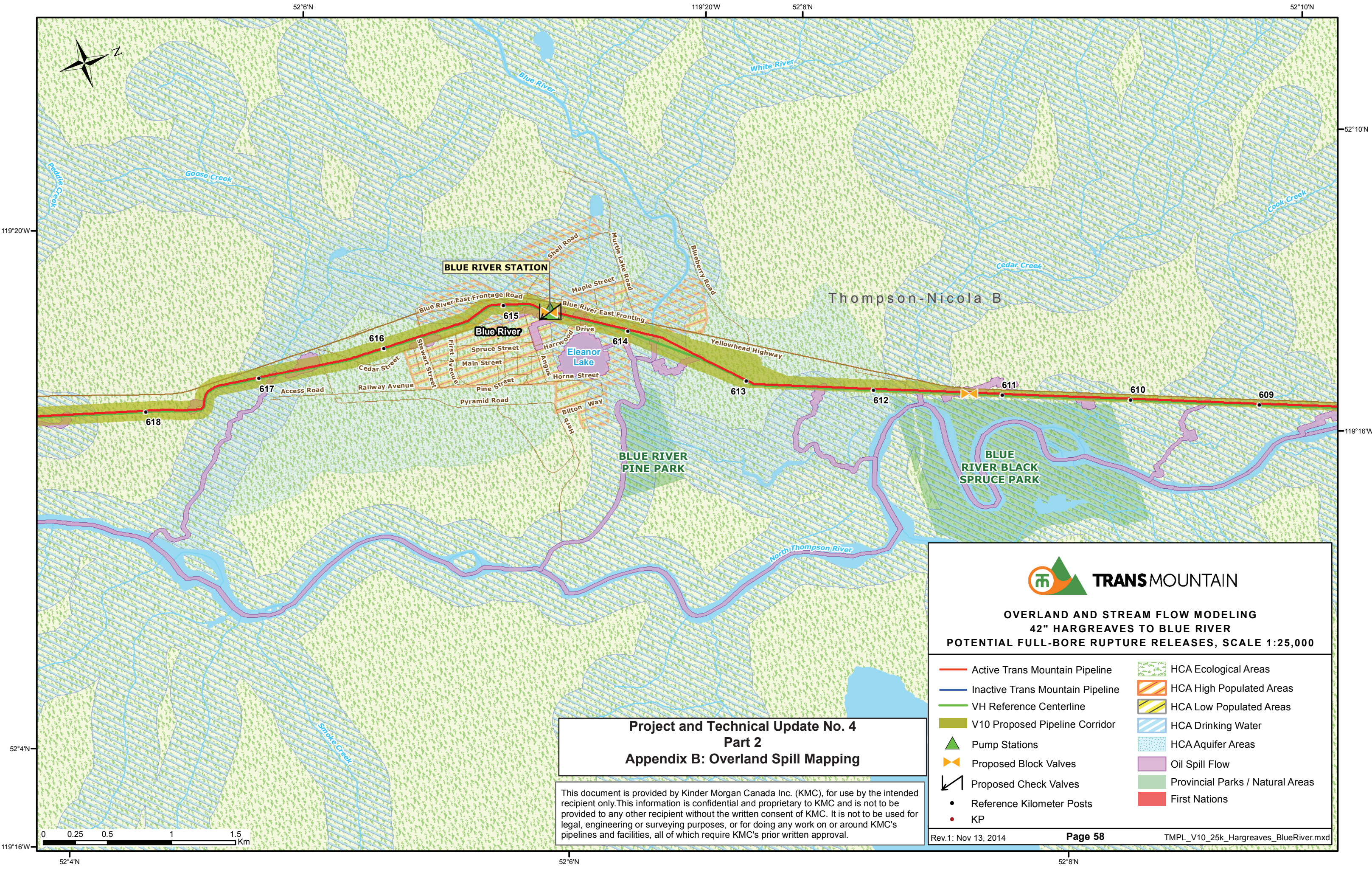
Project and Technical Update No. 4
Part 2
Appendix B: Overland Spill Mapping

This document is provided by Kinder Morgan Canada Inc. (KMC), for use by the intended recipient only. This information is confidential and proprietary to KMC and is not to be provided to any other recipient without the written consent of KMC. It is not to be used for legal, engineering or surveying purposes, or for doing any work on or around KMC's pipelines and facilities, all of which require KMC's prior written approval.



OVERLAND AND STREAM FLOW MODELING
42" HARGREAVES TO BLUE RIVER
POTENTIAL FULL-BORE RUPTURE RELEASES, SCALE 1:25,000

- | | |
|------------------------------------|----------------------------------|
| — Active Trans Mountain Pipeline | HCA Ecological Areas |
| — Inactive Trans Mountain Pipeline | HCA High Populated Areas |
| — VH Reference Centerline | HCA Low Populated Areas |
| V10 Proposed Pipeline Corridor | HCA Drinking Water |
| Pump Stations | HCA Aquifer Areas |
| Proposed Block Valves | Oil Spill Flow |
| Proposed Check Valves | Provincial Parks / Natural Areas |
| • Reference Kilometer Posts | First Nations |
| • KP | |



Project and Technical Update No. 4
Part 2
Appendix B: Overland Spill Mapping

This document is provided by Kinder Morgan Canada Inc. (KMC), for use by the intended recipient only. This information is confidential and proprietary to KMC and is not to be provided to any other recipient without the written consent of KMC. It is not to be used for legal, engineering or surveying purposes, or for doing any work on or around KMC's pipelines and facilities, all of which require KMC's prior written approval.



OVERLAND AND STREAM FLOW MODELING
42" HARGREAVES TO BLUE RIVER
POTENTIAL FULL-BORE RUPTURE RELEASES, SCALE 1:25,000

- | | |
|------------------------------------|------------------------------------|
| — Active Trans Mountain Pipeline | ■ HCA Ecological Areas |
| — Inactive Trans Mountain Pipeline | ■ HCA High Populated Areas |
| — VH Reference Centerline | ■ HCA Low Populated Areas |
| ■ V10 Proposed Pipeline Corridor | ■ HCA Drinking Water |
| ▲ Pump Stations | ■ HCA Aquifer Areas |
| ✕ Proposed Block Valves | ■ Oil Spill Flow |
| ↘ Proposed Check Valves | ■ Provincial Parks / Natural Areas |
| • Reference Kilometer Posts | ■ First Nations |
| • KP | |