

# ALBERTA CLIPPER EXPANSION PROJECT

APPLICATION BY ENBRIDGE PIPELINES INC.  
VOLUME I

Prepared by:

Enbridge Pipelines Inc.  
3000 Fifth Avenue Place  
425 - 1st Street S.W.  
Calgary, Alberta  
T2P 3L8 Canada

May 2007



## **NATIONAL ENERGY BOARD**

IN THE MATTER OF the *National Energy Board Act* (the "*NEB Act*"), being c. N-7 of the Revised Statutes of Canada 1985, as amended, and the Regulations made thereunder

AND IN THE MATTER OF the *Canadian Environmental Assessment Act* ("*CEAA*"), being c. 31 of the Statutes of Canada, 1992, as amended, and the Regulations made thereunder

AND IN THE MATTER OF an Application by Enbridge Pipelines Inc. respecting the Alberta Clipper Expansion Project

**TO: David Young, Acting Secretary  
National Energy Board  
Calgary, Alberta**

### **APPLICATION BY ENBRIDGE PIPELINES INC. RESPECTING THE ALBERTA CLIPPER EXPANSION PROJECT**

#### **THE APPLICANT**

1. Enbridge Pipelines Inc. ("EPI") is a body corporate, incorporated under the *Canada Business Corporations Act* ("*CBCA*") being c. C-44 of the Revised Statutes of Canada 1985, as amended. EPI is a "company" within the meaning of the *NEB Act*.
2. EPI is the owner and operator of the Canadian portion of the Enbridge Mainline System, which transports crude oil and petroleum products from Edmonton, Alberta to locations in Canada and to the Canada/United States border.

#### **THE ALBERTA CLIPPER EXPANSION PROJECT**

3. The Alberta Clipper Expansion Project involves the construction of a new oil pipeline from Hardisty, Alberta to Superior, Wisconsin. The Canadian facilities will include:

- (a) approximately 1,074 kilometres of new 914 mm outside diameter (OD) (NPS 36) pipeline from Hardisty, Alberta to the Canada / United States border near Gretna, Manitoba;
  - (b) new pump units at eight existing EPI pump stations and one new pump station near Regina, Saskatchewan; and
  - (c) receipt tankage, booster pump units and other terminalling facilities at Hardisty.
4. Alberta Clipper will have an initial capacity of approximately 71,500 m<sup>3</sup>/d (450 kbpd). The estimated capital cost of the Project in Canada is CAD\$2.0 billion (2007 \$), without Allowance for Funds Used During Construction ("AFUDC"). Construction is expected to be completed by December 31, 2009.
5. Construction of the Alberta Clipper Expansion Project in Canada will be within or alongside and contiguous to existing right of way ("ROW") for approximately 98% of its length. Approximately 22.5 kilometres of new, non-contiguous ROW will be required. The Project is accordingly, subject to an environmental screening under the CEEA.

#### **SUPPORTING MATERIAL**

6. In support of this Application, EPI provides and relies on the information attached to this Application and any additional information that it may file as directed or permitted by the Board.

#### **RELIEF REQUESTED**


7. EPI respectfully requests that the NEB:
- (a) issue a certificate of public convenience and necessity, pursuant to Section 52 of the *NEB Act*, authorizing the construction and operation of the Alberta Clipper Expansion Project;
  - (b) grant approval under Part IV of the *NEB Act* for the proposed tolling methodology for the Alberta Clipper Expansion Project; and
  - (c) grant such further and other relief as EPI may request or the Board may deem appropriate pursuant to Section 20 of the *NEB Act*.

8. EPI also respectfully requests that the Board, as the Responsible Authority pursuant to *CEAA*, after taking into consideration the screening report and any comments filed, make a decision pursuant to Section 20(1) of the *CEAA*.

**ALL OF WHICH IS RESPECTFULLY SUBMITTED.**

**DATED** at the City of Calgary, in the Province of Alberta, this 30th day of May, 2007.

ENBRIDGE PIPELINES INC.



---

Jennifer H. Strain  
Senior Regulatory Counsel

Communications relating to this  
Application should be directed to:

Ms. Jennifer H. Strain  
Enbridge Pipelines Inc.  
Suite 3000, 425 - 1st Street SW  
Calgary, Alberta T2P 3L8  
Telephone: 403-266 7909  
Facsimile: 403-231-7380  
Email: jennifer.strain@enbridge.com

Ms. Nancy Berard-Brown  
Enbridge Pipelines Inc.  
Suite 3000, 425 - 1<sup>st</sup> Street SW  
Calgary, Alberta T2P 3L8  
Telephone: 403-266-8339  
Facsimile: 403-231-3920  
Email: nancy.berard-brown@enbridge.com

- and -

Mr. D. G. Davies  
McCarthy Tétrault LLP  
Suite 3300, 421-7th Avenue S.W.  
Calgary, Alberta T2P 4K9  
Telephone: 403-260-3681  
Facsimile: 403-260-3501  
Email: ddavies@mccarthy.ca



## Table of Contents

<b>1</b>	<b>EXECUTIVE SUMMARY AND GENERAL INFORMATION</b>	<b>1-1</b>
1.1	Project Description	1-1
1.2	Project Costs	1-2
1.3	Anticipated Completion Date	1-2
1.4	Industry Consultation	1-2
1.5	Alternatives and Justification	1-3
1.6	Tolls and Tariffs	1-3
1.7	Engineering	1-3
1.8	Environmental Matters	1-3
1.9	Economics - Supply and Markets	1-4
1.10	Land Matters	1-4
1.11	Public Consultation and Aboriginal Engagement	1-4
1.12	Other Authorizations	1-4
1.13	Concordance Tables	1-5
1.14	Summary and Conclusions	1-5
<b>2</b>	<b>PROJECT INFORMATION</b>	<b>2-1</b>
2.1	Project Need	2-1
2.2	Canadian Proponent	2-2
2.3	Project Schedule	2-2
2.4	Project Costs	2-2
2.5	Project Financing	2-3
2.6	Economics	2-4
2.6.1	Supply Outlook	2-4
2.6.1.1	Reserves	2-4
2.6.1.2	Western Canadian Crude Oil Supply	2-5
2.6.2	Transportation	2-7
2.6.2.1	Projected Throughput	2-8
2.6.3	Markets	2-8
2.6.4	Conclusions	2-10
2.7	Alternatives and Justification	2-11
2.7.1	Alternatives	2-11
2.7.1.1	Addition of Pumping Capacity to Existing Lines	2-11
2.7.1.2	Looping Line 4 from Hardisty to Superior	2-11
2.7.1.3	Alberta Clipper 1067 mm OD (NPS 42) Option	2-11
2.7.2	Benefits	2-12
2.8	Industry Support	2-12
<b>3</b>	<b>ENGINEERING MATTERS</b>	<b>3-1</b>
<b>4</b>	<b>LANDS INFORMATION</b>	<b>4-1</b>
4.1	Lands Information for the Pipeline	4-1
4.1.1	New Permanent Right-of-Way Requirements	4-1
4.1.2	Temporary Workspace Requirements	4-2
4.1.3	Lands Required for Pumping Facilities	4-2
4.1.4	Valve Sites	4-2



4.1.5	Other Requirements.....	4-2
4.1.6	Departures from Existing Right-of-Way.....	4-3
4.2	Land Rights.....	4-3
4.3	Section 87 Notices.....	4-3
4.4	Land Acquisition Process.....	4-4
4.5	Land Acquisition Agreements.....	4-5
<b>5</b>	<b>ENVIRONMENTAL AND SOCIO-ECONOMIC ASSESSMENT.....</b>	<b>5-1</b>
<b>6</b>	<b>PUBLIC CONSULTATION AND ABORIGINAL ENGAGEMENT.....</b>	<b>6-1</b>
6.1	Overview.....	6-1
6.2	Public Consultation.....	6-1
6.2.1	Public Consultation Program Principles and Goals.....	6-1
6.2.2	Aboriginal Consultation Protocol.....	6-2
6.2.3	Design of the Public Consultation Program.....	6-2
6.2.4	Consultation Program Implementation.....	6-6
6.2.5	Stakeholders Contacted.....	6-14
6.2.6	Overall Consultation Outcomes.....	6-17
6.2.7	Interpretation of Consultation Program Outcomes.....	6-32
6.2.8	Next Steps.....	6-32
6.3	Aboriginal Engagement.....	6-32
6.3.1	Principles and Goals of the Aboriginal Engagement Program.....	6-33
6.3.2	Identifying Aboriginal Groups.....	6-33
6.3.2.1	Design of the Aboriginal Engagement Program.....	6-37
6.3.3	Implementing the Engagement Program.....	6-39
6.3.4	Key Issues and Comments.....	6-60
6.3.5	Next Steps.....	6-62
<b>7</b>	<b>APPENDICES.....</b>	<b>7-1</b>

## Glossary

**“AFUDC”** means an allowance for funds used during construction.

**“Annual Capacity”** means the sustainable pipeline capacity over a year after capacity reductions for routine and normal maintenance, routine operating problems and assuming minimal or no capacity reduction due to ratability issues.

**“Application”** means this application together with its Appendices.

**“bbf”** means barrels.

**“b/d”** means barrels per day.

**“Board”** means the National Energy Board.

**“CAPP”** means the Canadian Association of Petroleum Producers.

**“CBCA”** means the *Canada Business Corporations Act*.

**“CEAA”** means the *Canadian Environmental Assessment Act*.

**“Consultation Program”** means the public notification and consultation program.

**“Consultation Protocol Agreement”** means a mechanism for consultation that supports relationship building, identifies mutual priorities and interests and facilitates meaningful participation in consultation activities.

**“CSR”** means Corporate Social Responsibility Policy.

**“EGC”** means Enbridge Pipeline Inc.’s Environmental Guidelines for Construction (2003).

**“Enbridge Mainline System”** means the aggregate of the EPI Mainline System and the Lakehead System.

**“Enbridge Pipelines”** or **“EPI”** means Enbridge Pipelines Inc.

**“Enbridge”** or **“ENB”** means Enbridge Inc.

**“EPI Mainline System”** means all of the EPI NEB-regulated pipeline operations as of January 1, 2007, including all facilities and operations associated with the Terrace Expansion but not including Line 8 or Line 9 and as may be expanded or modified from time to time as a Non-Routine Adjustment or as agreed to by EPI and CAPP for inclusion of “EPI Mainline System” and approved by the NEB.

**“EEP”** means Enbridge Energy Partners, L.P.

**“EPI”** means Enbridge Pipelines Inc.



“**ESA**” means the Environmental and Socio-Economic Impact Assessment.

“**FSIN**” means the Federation of Saskatchewan Indian Nations.

“**kbpd**” means thousand barrels per day.

“**Lakehead System**” means the crude oil and liquid petroleum pipeline which spans from the international border near Neche, ND to the international border near Marysville, MI with an extension across the Niagara River into the Buffalo, N.Y. area. The Lakehead System is regulated by the FERC and owned by Enbridge Energy Partners.

“**m<sup>3</sup>**” means cubic metre.

“**m<sup>3</sup>/d**” means cubic metres per day.

“**MAOP**” means maximum allowable operating pressure.

“**MMF**” means the Manitoba Métis Federation.

“**MMb**” means million barrels.

“**MMb/d**” means million barrels per day.

“**NEB**” means the National Energy Board.

“**NEB Act**” means the *National Energy Board Act*, R.S.C., 1985, c. N-7.

“**OPR**” means the Onshore Pipeline Regulations, 1999, as amended from time to time.

“**PIP**” means the Preliminary Information Package.

“**ROW**” means right-of-way.

“**Project**” means the Alberta Clipper Expansion Project as described herein.

“**RMs**” means rural municipalities.

“**Southern Access**” means an expansion and extension of the Enbridge Mainline System, including pump station modifications in Alberta, Saskatchewan, and Manitoba, and new pipeline in Wisconsin and Illinois, to increase crude oil capacity to Midwest refineries and beyond.

“**Southern Lights**” means a proposed pipeline project to transport diluent from the U.S. Midwest to the Edmonton, Alberta area and includes reversing the flow of EPI’s Line 13 for such purpose (the “Diluent Return Project”) and new pipeline construction to replace the capacity of Line 13 from Cromer to Gretna (the “Capacity Replacement Project”), as more particularly set out in the application filed with the NEB on March 9, 2007.



**“TERA”** means Tera Environmental Consultants, in cooperation with Jacques Whitford Limited, Applied Aquatic Research Ltd., Clearstone Engineering Ltd., Decision Economics Consulting Group, and Mentiga Pedology Consultants Ltd.

**“TMPL”** means Kinder Morgan’s Trans Mountain Pipeline Limited.

**“VEC”** means valued ecosystem component.

**“WCSB”** means the Western Canadian Sedimentary Basin.



# 1 EXECUTIVE SUMMARY AND GENERAL INFORMATION

## 1.1 Project Description

The Alberta Clipper Expansion Project (the “Project”) is a new 1,607 kilometre 914 mm OD (NPS 36) oil pipeline extending from Hardisty, Alberta to Superior, Wisconsin. The pipeline will have an initial annual capacity of 71,500 m<sup>3</sup>/d (450 kbpd) but is designed to be expandable up to 127,000 m<sup>3</sup>/d (800 kbpd) with the addition of pumping capacity. The 127,000 m<sup>3</sup>/d (800 kbpd) ultimate capacity of Alberta Clipper matches the expansion capacity available on the downstream Southern Access pipeline from Superior to Chicago, Illinois thus balancing the EPI Mainline System upstream and downstream of Superior.

The Project has been developed in response to requests from Western Canadian oil sands producers for increased take away capacity out of the Western Canadian Sedimentary Basin (“WCSB”) and into the traditional and extended PADD II and Eastern Canadian markets. The Project provides increased takeaway capacity to accommodate oil sands development as well as supply to proposed refinery conversions in the U.S. Midwest. The addition of a new pipeline from Hardisty to Superior provides Enbridge with increased flexibility to meet supply forecasts and accommodate changing crude slates over time.

The Project will provide capacity in a timely manner, as required by the market. Construction is expected to be completed at the end of Q4 2009.

In Canada, the Project is comprised of the following components:

- Approximately 1,074 kilometres of new 914 mm OD (NPS 36) oil pipeline between EPI’s Hardisty Terminal and the Canada / United States border near Gretna, Manitoba. The construction in Canada will be within or alongside and contiguous to existing EPI ROW or other rights of way for almost its entire length. Approximately 22.5 kilometres of new, non-contiguous ROW will be required;
- Installation of new pump units at eight existing EPI pump station facilities between Hardisty and Gretna and construction of a new pump station near Regina, Saskatchewan; and
- Receipt tankage, booster pump units and other terminalling facilities at Hardisty.

A map illustrating the Project is shown as Figure 1-1 below:

**Figure 1-1: Project Map**



## 1.2 Project Costs

The estimated capital cost of the Canadian portion of the Project is CAD\$2.0 billion (2007 \$), excluding AFUDC. The estimated capital cost of the U.S. segment is US \$1.0 billion (2007 \$), excluding AFUDC.

## 1.3 Anticipated Completion Date

Subject to the receipt and timing of regulatory approval, construction of the Alberta Clipper Expansion Project is expected to be completed by the end of Q4 2009.

## 1.4 Industry Consultation

EPI's initial discussions with industry participants began in early 2006 in response to requests from Western Canadian oil sands producers for increased takeaway capacity to accommodate oil sands development as well as supply to proposed refinery conversions in the U.S. Midwest. As a result of those initial discussions EPI determined there was broad industry support and a preference

for a rolled-in tolling approach whereby the Project would be integrated with the Enbridge Mainline System.

Since September 2006, EPI has held extensive discussions with producers, marketers, refiners and CAPP. These discussions are ongoing and EPI expects to complete a settlement with CAPP addressing the commercial terms and the tolling methodology applicable to the Project by the end of June, 2007.

Further details regarding industry negotiations are found in Section 2.8.

## **1.5 Alternatives and Justification**

The need for the Project is evidenced by industry's support for the Project on a rolled-in basis, as well as forecasts of supply and market demand for the volumes to be transported. EPI investigated a number of alternatives before determining that the Project provided the most economic expansion available to industry while ensuring flexible and scalable incremental capacity out of the WCSB. Details are found in Section 2.7.

## **1.6 Tolls and Tariffs**

Further details on the tolling methodology will be provided to the Board when the settlement with CAPP is concluded in June 2007.

## **1.7 Engineering**

Section 3.0 provides details of the engineering design, construction and operations for the pipeline, pump stations, tanks and associated facilities.

## **1.8 Environmental Matters**

Tera Environmental Consultants ("TERA"), in cooperation with Jacques Whitford Limited, Applied Aquatic Research Ltd., Clearstone Engineering Ltd., Decision Economics Consulting Group and Mentiga Pedology Consultants Ltd., prepared a detailed Environmental and Socio-Economic Assessment ("ESA") for the Project. The ESA was prepared following the guidelines of the NEB Filing Manual (2004) and the reporting requirements as outlined in Sections 16(1) and 16(2) of the *CEAA*. As the proposed Project is not of a type listed in the *Comprehensive Study List Regulations*, it should proceed by way of a screening.

The ESA concludes that the Project is not likely to cause significant adverse environmental or socio-economic effects. Further information concerning the ESA is found in Section 5.0 of this Application and the ESA, which is included as Volume II of this Application.



## **1.9 Economics – Supply and Markets**

Section 2.6 of this Application provides a forecast of future crude oil production from the WCSB and a discussion of crude oil transportation systems and markets for the incremental volumes to be shipped on Alberta Clipper.

## **1.10 Land Matters**

Section 4.0 of this Application describes the land requirements for the Project and the process and schedules for obtaining the land rights and temporary workspace requirements.

## **1.11 Public Consultation and Aboriginal Engagement**

Section 6.0 of this Application describes the public consultation and Aboriginal engagement programs, including the design, principles, implementation and outcomes. It includes information on consultation that has taken place, and will continue to take place, with landowners, government, local communities, Aboriginal groups, industry and the general public.

## **1.12 Other Authorizations**

In addition to the Board's approvals requested in this Application, other authorizations and permits to be issued by federal, ancillary provincial and state agencies in Canada and the United States will be required. Descriptions of these authorizations in Canada are provided in Section 2.4.11 of the ESA.

The list below includes, but is not limited to, the major permits that EEP will be applying for from federal and state agencies in the United States. EEP has been and continues its pre-filing consultations with those agencies and plans to have all necessary applications filed by the end of second quarter 2007.

**Table 1-1: Required U.S. Permits**

<b>Name of Permitting Agency</b>	<b>Type of Permit</b>
Federal Energy Regulatory Commission	Federal
Department of State	Federal
International Boundary Commission	Federal
Chippewa National Forest	Federal
U.S. Department of the Interior Fish and Wildlife Service	Federal
State Historic Preservation Office	Federal
U.S. Army Corps of Engineers	Federal
North Dakota Public Service Commission	State
Minnesota Public Utility Commission	State
Minnesota Dept. of Commerce	State
Leech Lake Reservation	Tribal
Fond du Lac Reservation / Bureau of Indian Affairs	Tribal
Wisconsin Public Service Commission	State
Wisconsin Dept. of Natural Resources	State

### 1.13 Concordance Tables

The NEB Concordance Tables are attached as Appendix 1-1.

### 1.14 Summary and Conclusions

With supply from Western Canada oil sands developments expected to grow by as much as 147,700 m<sup>3</sup>/d (935 kbpd) by 2010 and 362,300 m<sup>3</sup>/d (2,279 kbpd) by 2015 compared to 2006, more transportation capacity is required out of the oil sands and into the U.S. Midwest and Ontario markets in order to avoid the shut-in of Western Canadian crude production. As confirmed by Muse Stancil this is the case assuming other projects such as Keystone and the Trans Mountain expansion proceed as scheduled. The Project addresses this need. Completion of construction by the end of Q4 2009 meets industry's needs. Through the addition of pumping facilities, efficient expansions increasing capacity from 71,500 m<sup>3</sup>/d (450 kbpd) up to 127,000 m<sup>3</sup>/d (800 kbpd) can be staged in increments to match market requirements and mitigate the risks of under-utilized facilities.

The proposed pipeline also provides a connection to the downstream portion of the Enbridge Southern Access Expansion and Extension Projects, resulting in an integrated and balanced system with incremental capacity from Hardisty, Alberta to Chicago and Patoka, Illinois.





The pipeline ROW follows existing EPI ROW or other rights of way for approximately 98% of its length and therefore minimizes environmental and socio-economic impacts and reduces the risk of construction delays.

## 2 PROJECT INFORMATION

### 2.1 Project Need

Canada is a key source of crude oil imports into the United States. In 2006, Canada ranked as the top supplier to the U.S., surpassing more volatile traditional sources. Similarly, the U.S. Mid-Continent region is a key market for Canadian production. For instance, in 2006 Enbridge transported 65% of total Canadian crude oil exports to the U.S. The EPI Mainline System is the sole means of transportation for WCSB crude oil to reach the Ontario market.

With supply from Western Canada oil sands developments expected to grow by as much as 362,300 m<sup>3</sup>/d (2,279 kbpd) by 2015 (see Section 2.6), the industry requires more capacity out of Western Canada and into the U.S. Midwest markets. These capacity requirements are driven by oil sands producers and refiners that have long development timelines and need assurance that adequate pipeline infrastructure will be put in place in time to serve their projects.

The Alberta Clipper Expansion Project has been developed in consultation with shippers to address expected capacity constraints as a result of increasing supplies from Western Canada. Construction of the Project is expected to be completed by late 2009, after the Southern Access expansion and extension programs are completed.

The Southern Access and Southern Lights Capacity Replacement Project are expected to be in-service in 2009, prior to Alberta Clipper becoming operational. At that point, the Enbridge Mainline System will have just over 286,000 m<sup>3</sup>/d (1.8 MMb/d) of crude oil pipeline capacity into the Superior, Wisconsin area over three lines (i.e. excluding Line 1, which is primarily a refined products line), roughly matching the capacity on the four lines exiting Superior.

Furthermore, in recognition of expected growth in WCSB production, Enbridge has optimised “ex” Superior capacity to minimize the cost to industry of future expansions out of the WCSB. In particular, the ultimate capacity of the Southern Access pipeline (Line 61) from Superior to Flanagan, Illinois can be increased from 64,000 m<sup>3</sup>/d (400 kbpd) to 191,000 m<sup>3</sup>/d (1,200 kbpd). Once these future expansions are completed, the “ex” Superior capacity will be just over 437,000 m<sup>3</sup>/d (2.75 MMb/d). Alberta Clipper, at its ultimate capacity of 127,000 m<sup>3</sup>/d (800 kbpd), will bring the total capacity upstream of Superior to 2,670 kbpd, thus effectively balancing Enbridge Mainline System upstream and downstream of Superior.

Further details on Project benefits and industry support for the Project are provided in Sections 2.7 and 2.8.



## 2.2 Canadian Proponent

The Canadian proponent of the Project is EPI. EPI is a corporation existing under the laws of Canada and is a subsidiary of Enbridge Inc. EPI owns and operates the EPI Mainline System.

## 2.3 Project Schedule

The schedule for the Project is shown in Figure 2-1.

Figure 2-1: Project Schedule

Activity	2006				2007				2008				2009				2010			
	1	2	3	4	1	2	3	4	1	2	3	4	1	2	3	4	1	2	3	4
<b>Regulatory Hearings</b>																				
Submit regulatory applications						♦														
Regulatory review and hearings						■	■	■												
Regulatory approval - February 2008											♦									
<b>Design and Construction</b>																				
Engineering design						■	■	■	■	■	■	■								
Procurement and Fabrication											■	■	■	■	■	■				
Construction															■	■	■	■	■	■

Construction activities will begin upon receipt of regulatory approvals and are expected to be complete by December 2009.

## 2.4 Project Costs

The estimated capital cost of the Canadian portion of the Project is CAD\$2.0 billion (2007 \$), excluding AFUDC, as shown in Table 2-1:



**Table 2-1: Estimated Capital Cost for Alberta Clipper Project in Canada (2007 \$)**

Project Costs	CAD \$ Million
Land	\$ 45.3
Pipeline	\$ 466.6
Pipeline Construction	\$ 944.3
Stations	\$ 95.8
Station Construction	\$ 65.2
Tanks and Terminals	\$ 29.8
Tanks and Terminals Construction	\$ 63.8
Owner Costs	\$ 27.2
Electrical Infrastructure	\$ 33.0
Contingency	\$ 248.9
<b>TOTAL</b>	<b>\$2,019.9</b>
AFUDC	\$ 236.0
<b>TOTAL WITH AFUDC</b>	<b>\$2,255.9</b>

AFUDC is estimated to be CAD \$236 million.

The annual incremental operating cost for the Project is CAD \$17.4 million (2006 \$) (excluding power costs) in the first year.

## 2.5 Project Financing

Enbridge Inc. is a leader in energy transportation and distribution in North America and internationally with combined assets in excess of CAD\$18.4 billion as of December 31, 2006. With its diversified earnings base and strong history of financial performance, Enbridge Inc. enjoys ready access to funding in both the public and private capital markets. Over the last five years Enbridge Inc., its subsidiaries and affiliates, have raised over CAD\$5 billion in term debt and equity. A copy of the Enbridge Inc. 2006 Annual Report is provided in Appendix 2-1.

Enbridge intends to issue short-term commercial paper to fund construction of the Project and then refinance the construction funding at the appropriate time with long-term debt. The Enbridge commercial paper programs are fully backstopped by existing credit facilities. Based on discussions with our bankers, any amendments to the size of the credit facilities required to fund the construction phase of the Alberta Clipper Project should be available to the company based on current market conditions. Enbridge Inc. will ultimately provide the equity financing for the Alberta Clipper Project. Enbridge will source the equity funding from internally generated cash-flows and capital market transactions.

## 2.6 Economics

This section provides information on WCSB supply and markets for the incremental volumes to be transported on Alberta Clipper, as well as related transportation logistics.

EPI considered three sources of supply information, all of which speak to the need for additional transportation capacity to accommodate production from the WCSB and are discussed below in Section 2.6.1:

- The CAPP Crude Oil Production and Supply Forecast 2006-2020 dated May 2006, attached as Appendix 2-2. As indicated in Appendix 2-2, the annual CAPP forecast provides industry with a long-range outlook for Canadian crude oil production. The primary use of the forecast is to enable members to plan for pipeline capacity requirements for transporting Western Canadian crude oil to markets. The forecast is based on a survey of its members in order to capture all potential projects. In 2006, CAPP received a 100% response rate.
- The EPI Long Range Forecast (2006-2015) dated June 15, 2006 attached as Appendix 2-3.
- The NEB publication entitled “Canada's Oil Sands - Opportunities and Challenges to 2015: An Update - Energy Market Assessment June 2006.”

For the market assessment, EPI contracted the services of Muse Stancil to provide an independent analysis of markets to justify the need for expanded capacity out of Western Canada. Muse Stancil has extensive experience conducting U.S. market and benefits analyses and has done similar work for Enbridge in the past. A copy of the report entitled Market Assessment for the Alberta Clipper Project 2010 - 2020 is provided in Appendix 2-4.

Given that the CAPP forecast is publicly available, has wide acceptance within the industry and is based on information received from all CAPP members, Enbridge directed Muse Stancil to use the CAPP supply forecast for the purposes of its market study.

### 2.6.1 Supply Outlook

#### 2.6.1.1 Reserves

Crude oil is produced from established conventional and nonconventional reserves in the WCSB. Estimates of remaining established reserves, according to the NEB, are shown in Table 2-2. Western Canadian conventional oil reserves (British Columbia, Manitoba, Alberta and Saskatchewan and Mainland Territories) were estimated at 494 million m<sup>3</sup> (3,010 MMb) at the end of 2005. More importantly for Canada is the estimated reserve volume for non conventional oil. The NEB reports that remaining established bitumen reserves are estimated to be 27,601 million m<sup>3</sup> (174 billion bbl). At current production

rates, it is estimated that there is slightly more than 200 years of supply remaining in the WCSB. The Alberta Energy and Utilities Board estimates oil sands initial volumes in place to be 270 billion m<sup>3</sup> (1.7 trillion bbl).

**Table 2-2: Estimates of Remaining Established Reserves of Oil and Bitumen Resource at the end of 2005**

<b>Conventional Crude Oil</b>	<b>Thousand Cubic Metres</b>	<b>Thousand Barrels</b>
British Columbia	20,900	131,670
Alberta	254,800	1,605,240
Saskatchewan	197,800	1,246,140
Manitoba	4,500	28,350
Ontario	1,600	10,080
Mainland Territories	15,700	98,910
East Coast Offshore	200,300	1,261,890
<b>Total Conventional</b>	<b>695,600</b>	<b>4,382,280</b>
<b>Bitumen</b>	<b>Thousand Cubic Metres</b>	<b>Thousand Barrels</b>
oil sands - upgraded crude	5,052,000	31,827,600
oil sands - bitumen	22,549,000	142,058,700
<b>Total Bitumen</b>	<b>27,601,000</b>	<b>173,886,300</b>
<b>TOTAL REMAINING RESERVES</b>	<b>28,296,600</b>	<b>178,268,580</b>

**Source:** National Energy Board Canadian Energy Overview 2006, May 2007

### 2.6.1.2 Western Canadian Crude Oil Supply

As stated previously, CAPP, EPI and the NEB released supply forecasts in May and June 2006. Enbridge has recently completed its 2007 Long Range Forecast. This forecast is also attached as Appendix 2-3 and has also been included in Figure 2-2 for reference.

Figure 2-2 provides the supply outlook from the CAPP, NEB and EPI (2006 and 2007) forecasts. All four forecasts demonstrate significant growth in WCSB production over the next 10 to 15 years. By 2010, the forecasts show that there could be between 95,390 to 127,200 m<sup>3</sup>/d (600 to 800 kbpd) of incremental crude oil production. Existing pipeline capacity will not be able to accommodate this growth.



**Figure 2-2 Comparisons of WCSB Production Forecasts (2006)**

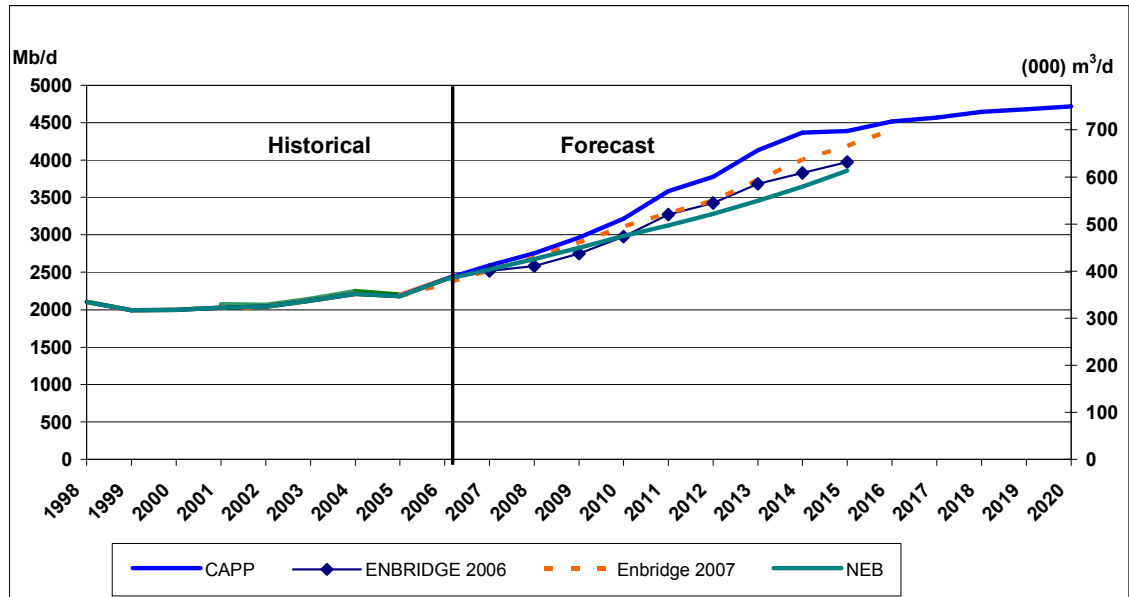
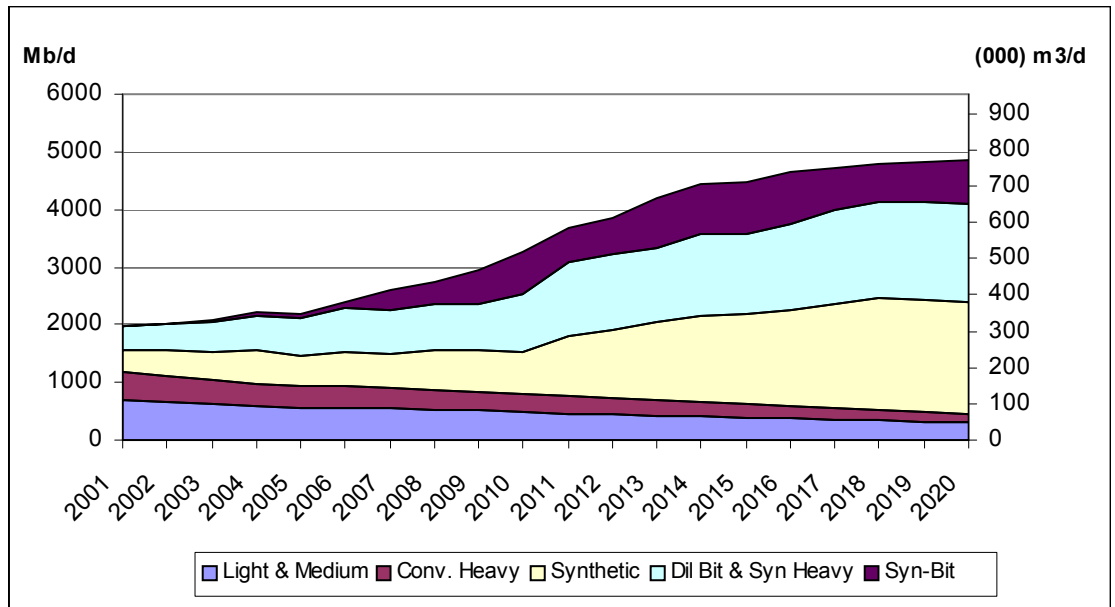


Figure 2-3 demonstrates the growth in Western Canadian crude oil supply as forecast by CAPP. The forecast assumes that total supply is expected to grow from 517,500 m<sup>3</sup>/d (3,255 kbpd) in 2010 to an increase of approximately 136,700 m<sup>3</sup>/d (860 kbpd) over estimated 2006 volumes. This total supply is expected to continue to increase to reach a total of 710,700 m<sup>3</sup>/d (4,470 kbpd) by 2015, a further increase of 193,200 m<sup>3</sup>/d (1,215 kbpd) over 2010 levels.

The synthetic oil supply to market (net synthetic used in syn-bit) growth forecast assumes the development of new heavy oil upgrading capacity and some expansions at existing plants. Total synthetic oil supply is expected to grow from 97,780 m<sup>3</sup>/d (615 kbpd) in 2006 to 118,900 m<sup>3</sup>/d (748 kbpd) in 2010, an increase of 21,120 m<sup>3</sup>/d (133 kbpd) with an additional 130,500 m<sup>3</sup>/d (821 kbpd) by 2015.

Syn-bit, Dil Bit and Heavy Synthetic supply is expected to grow from 136,252 m<sup>3</sup>/d (857 kbpd) in 2006 to 272,186 m<sup>3</sup>/d (1,712 kbpd) in 2010, an increase of 135,934 m<sup>3</sup>/d (855 kbpd). A further 90,620 m<sup>3</sup>/d (570 kbpd) in growth is expected by 2015. Total heavy supply, including conventional heavy production, is expected to more than double from 194,759 m<sup>3</sup>/d (1,225 kbpd) in 2006 to 398,740 m<sup>3</sup>/d (2,508 kbpd) in 2015.

**Figure 2-3 CAPP Western Canadian Crude Oil Supply Forecast**



### 2.6.2 Transportation

The WCSB is a major source of crude oil supply for Canadian and United States refining centres. Edmonton area refineries receive their feedstock requirements by a network of feeder pipelines from various producing areas in Alberta, British Columbia and the Northwest Territories. Saskatchewan refineries receive crude oil through feeder pipelines from producing areas in Saskatchewan as well as through delivery points on the EPI Mainline System.

The two primary distribution centres in Alberta are located near Edmonton and Hardisty. From these hubs, there are three major trunklines as well as three smaller pipelines that transport crude oil to domestic and export markets. At the Edmonton hub, crude oil is currently transported east on EPI’s Mainline System, west on Kinder Morgan’s Trans Mountain Pipeline Limited (“TMPL”), and south through Pacific Energy Partner’s Rangeland Pipeline system. At the Hardisty hub, crude oil can travel south to PADD IV and PADD II on Kinder Morgan’s Express Pipeline or through the combination of InterPipeline Fund’s Bow River and Plains Marketing’s Milk River pipelines. Although not connected to the Alberta hubs, Plains’ Wascana pipeline also delivers oil to PADD IV from Regina, where it connects with feeder pipelines and the EPI Mainline System. The EPI Mainline System and Express Pipeline provide the largest take-away capacity to North American mid-continent markets. The TMPL system is the only pipeline that can currently access markets on the west coast.

The EPI Mainline System originates in the Edmonton area with downstream connections to further receive or deliver Canadian crude oil and petroleum products at Hardisty, Alberta, Kerrobert and Regina, Saskatchewan and Cromer and Gretna, Manitoba. Current EPI Mainline capacity is 326,400 m<sup>3</sup>/d



(2,053 kbpd). At the Canada/United States border, the EPI Mainline System connects with the Lakehead System. Canadian crude oil is delivered to Northern Tier refineries located in Minnesota and Wisconsin, Midwest markets of Chicago, Toledo, Detroit and the PADD I market of Warren, Pennsylvania, and Ontario. Through a connection to the Spearhead Pipeline at Chicago, Canadian crude oil can access the southern PADD II Cushing, Oklahoma market or be transported to the U.S. Gulf Coast through ExxonMobil Pegasus pipeline from Patoka to Texas. With the addition of the Alberta Clipper pipeline, EPI Mainline capacity will expand to 428,600 m<sup>3</sup>/d (2,696 kbpd) by 2010.

TransCanada PipeLine's Keystone Project proposes to convert existing gas infrastructure and construct new pipeline and facilities to transport oil from Hardisty, AB to Wood River, IL. The Keystone pipeline would have a capacity of 69,100 m<sup>3</sup>/d (435 kbpd). As set out below in Section 2.6.4, this Pipeline has been considered by Muse Stancil in its analysis of supply disposition.

### **2.6.2.1 Projected Throughput**

Graphs representing forecasted throughput on the Enbridge Mainline System are shown in Appendix 2-5. This analysis shows predicted light and heavy throughput on the Enbridge Mainline System using the Enbridge 2007 Long Range Forecast. Forecast throughput is shown ex-bottleneck locations and excludes crude oil anticipated to be transported on Trans Mountain, Express, Milk River, Rangeland and Keystone.

As CAPP does provide an aggregated volume of light and heavy crude supply available to Enbridge, its forecast line has been included in the graphs to provide a comparison.

Enbridge has also shown current as well as forecast capacity with potential expansions and line service changes, to optimise the system based on forecast volumes. Appendix 2-5 illustrates the requirement for expanded capacity. Without the Alberta Clipper Project, heavy and light crude oil throughput would reach current capacity by 2010 and 2011 respectively.

### **2.6.3 Markets**

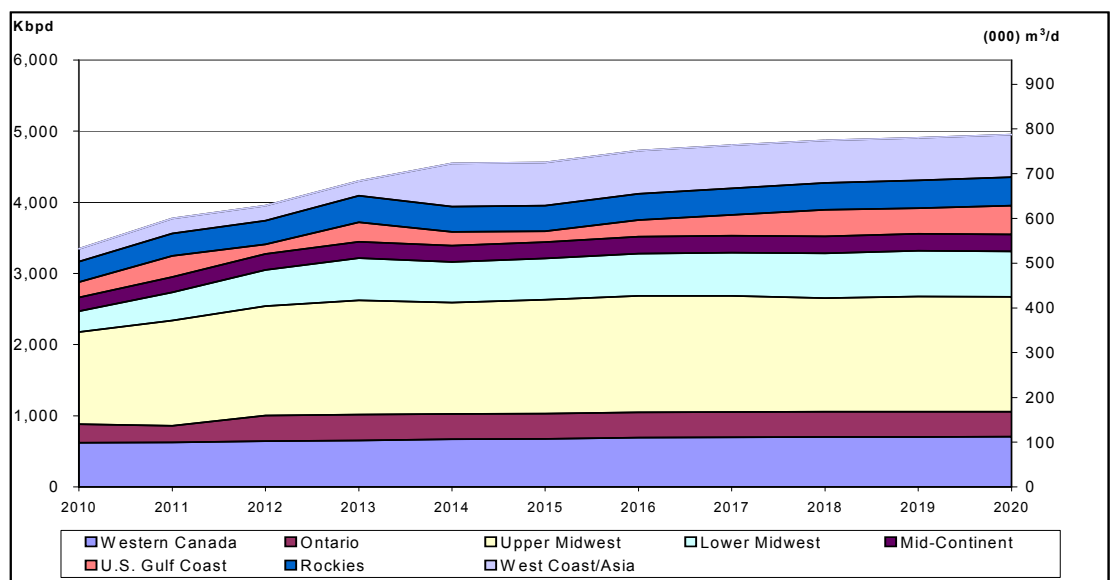
The expected growth in WCSB crude oil production will require further penetration into existing markets and expansion to new markets. This Section outlines a high level description of current markets. Further details on sub-markets are provided in the Muse Stancil report in Appendix 2-4.

Demand prospects for Canadian oil are bright within the markets that the Project can initially access. Western Canadian crude represents an economically attractive feedstock for the refiners in these markets. Accordingly, the refiners are actively pursuing various upgrading and expansion projects to further increase their ability to process Western Canadian crude. In addition, there is a significant volume of competing crudes that currently flow into Ontario and the Midwest that can be displaced by Western Canadian crude grades.



Muse Stancil used its Market Optimization model to demonstrate the disposition of Western Canadian crude oil supply (see Figure 2-4). As Muse Stancil is showing the benefits of the proposed Alberta Clipper Project, the analysis starts in the year 2010. The size of the Western Canadian market only has a marginal increase, as there is no forecasted substantial increase in refining capacity. The refineries in the U.S. Rockies are projected to increase runs of WCSB crude oil at an average annual growth rate of 3% as domestic production declines and some investment is made to process incremental Canadian volumes. WCSB supply increases into Ontario as new refining capacity is introduced and replaces foreign crude oil into existing facilities.

**Figure 2-4 Disposition of Western Canadian Crude Oil Supply**



In its study, Muse Stancil concludes that the largest growth markets for Canadian crude oil, which can be served by expanded Enbridge capacity, are the refining areas in the Upper and Lower Midwest, Mid-Continent, and U.S. Gulf Coast. The Upper and Lower Midwest markets are expected to account for approximately 50% of the market share of Canadian crude oil supply on average from 2010 to 2020. Refiners such as BP, ConocoPhillips and Marathon have announced expansion or conversion projects for their refineries. Demand for Canadian crude oil in the Midwest is expected to be 251,800 m<sup>3</sup>/d (1,584 kbpd) in 2010, growing by a further 94,700 m<sup>3</sup>/d (596 kbpd) by 2015.

The Spearhead Pipeline from Chicago to Cushing has provided increased access to Mid-Continent markets. It is forecast that volumes will continue to increase into this market as further investments are made to process Canadian crude oil. Beyond the Mid-Continent, Muse has forecast volumes of Canadian crude oil will supply the U.S. Gulf Coast. This market has a current refining capacity of 1.1 million m<sup>3</sup>/d (7,300 kbpd). Assumptions have been made that pipelines will be built or reversed in order to access this large market. The current consumption of heavy sour crude on the U.S. Gulf Coast is approximately

350,000 m<sup>3</sup>/d (2,200 kbpd), which makes it the largest demand centre for heavy sour crude in the world. Consumption of waterborne light sweet exceeds 150,000 m<sup>3</sup>/d (approx. 1,000 kbpd), and the refineries that process such grades would be interested in the Canadian sweet synthetics as long as the Canadian synthetic is price competitive.

#### **2.6.4 Conclusions**

In its report, Muse Stancil concludes that the Alberta Clipper Expansion has the ability to serve growing needs for the Ontario, Warren, Pennsylvania and PADD II and III markets. Using existing pipeline infrastructure, almost every refinery in PADD II can be accessed with crude deliveries made through the EPI Mainline System. This is a very important market for WCSB crude oil as current refining capacity is 550,000 m<sup>3</sup>/d (3,500 kbpd). Many refineries are either in the process of or studying opportunities to reconfigure or expand. Many of these plans involve increasing the ability to process incremental volumes of blended bitumen.

Some of Muse Stancil's key findings are:

- Western Canadian and Northern Tier U.S. crude oil demand is not foreseen to grow significantly;
- Demand is expected to increase in all PADD II sub-markets as proposed refinery investment occurs; and
- Increased volumes of WCSB crude oil into Ontario are anticipated as new refining capacity emerges and demand decreases for offshore sources.

Muse Stancil has identified the key benefits of the Project as:

- Improved access to refining customers within Ontario and PADD II; and
- Avoidance of shut-in of Western Canadian crude oil production.

Through the use of its Crude Market Optimization Model, Muse Stancil has calculated the benefits of increased market access as well as estimated shut in production should Alberta Clipper not be built. The ability to move crude oil to market increases its aggregate value to both the producer and the refiner. Muse Stancil calculates the average annual aggregated crude market value to be CAD\$275 Million between 2011 and 2020. This is demonstrated by comparing the model outputs with and without Alberta Clipper. However, if crude oil is not able to flow to market due to lack of pipeline capacity, then the Optimization model calculates annual estimated shut in barrels of bitumen to average 15 million m<sup>3</sup> (94.2 million bbl), with an average cost to producers and refiners of CAD\$2 Billion. If pipeline capacity is made available, then the revenue is not lost and downstream refiners are able to purchase their preferred feedstock. In order for the supply forecast to materialize, expansions of pipeline capacity to existing and new markets need to be in place.

## **2.7 Alternatives and Justification**

EPI investigated a number of alternatives before determining that the Project was the most economic expansion available to industry to provide flexible and scaleable incremental capacity out of the WCSB. The alternatives considered include:

### **2.7.1 Alternatives**

#### **2.7.1.1 Addition of Pumping Capacity to Existing Lines**

EPI investigated increasing pump capacity on its existing lines as a means of increasing capacity out of the WCSB. EPI concluded that adding additional pump capacity to Lines 2, 3 and 4 beyond what is currently envisioned as part of the Southern Access and Southern Lights Programs would add relatively little new capacity and would result in substantially higher power costs. Adding additional pump capacity in addition to what is currently planned is not a cost effective option for adding new capacity.

#### **2.7.1.2 Looping Line 4 from Hardisty to Superior**

Line 4 from Hardisty to Superior is currently configured as a series of segments each approximately 65 kilometres long and consisting of 914 mm OD (NPS 36) and 1219 mm OD (NPS 48) pipe. The 1219 mm OD portions of pipe represent about 20% of the total length of Line 4 between Hardisty and Superior.

EPI investigated looping out the 1219 mm OD (NPS 48) segments of Line 4 to create a complete 1219 mm OD (NPS 48) pipeline from Hardisty to Superior, reserving the existing 914 mm OD (NPS 36) segments for future use. Enbridge determined that although this looping program is possible, the capital cost, construction impacts, and potential product quality concerns make it a less desirable alternative.

Because of the incremental per mile cost of larger diameter pipe, the capital cost of the looping would be higher than constructing a new 914 mm OD (NPS 36) pipeline, and the looping would result in less flexibility and add less new capacity than constructing a new 914 mm OD (NPS 36) pipeline. New stations would be required for the 1219 mm OD (NPS 48) loop as the existing Line 4 pumping station capacity would not be sufficient for such a line. Furthermore, the minimum flow rate of a 1219 mm OD (NPS 48) pipeline would be very high, leading to a need to add batch pigging facilities (further adding to capital costs) or leading to potential quality impacts in the initial years of service.

#### **2.7.1.3 Alberta Clipper 1067 mm OD (NPS 42) Option**

EPI investigated building a new 1067 mm OD (NPS 42) pipeline from Hardisty to Superior. This option would require an incremental capital investment but would result in annual power savings.

The toll for a 1067 mm OD (NPS 42) design would be higher than a corresponding 914 mm OD (NPS 36) design until the annual flow rate was over 111,000 m<sup>3</sup>/d (700 kbpd). The current CAPP supply forecast suggests that volumes on the proposed pipeline would not reach this level until 2014-2015. Consequently, this option was rejected as an alternative.

Based on the foregoing investigations, EPI decided to pursue the proposed Alberta Clipper design.

## 2.7.2 Benefits

The Project addresses the need for increased capacity out of the WCSB as a result of increased oil production over the next 15 years. Expansions from the initial capacity of 71,500 m<sup>3</sup>/d (450 kbpd) up to 127,000 m<sup>3</sup>/d (800 kbpd) can be staged in increments to match market requirements and therefore reduce the risk of under-utilized facilities.

The Project can be in-service to meet industry's needs.

The 127,000 m<sup>3</sup>/d (800 kbpd) ultimate capacity of the Project matches the expansion capacity available on the downstream Southern Access pipeline from Superior to Chicago, Illinois thus balancing the Enbridge Mainline System upstream and downstream of Superior.

Integration with the Enbridge Mainline System provides for operational flexibility and the ability to optimize the system. Changes in volumes can be more readily managed and lines can be segregated to meet shippers' delivery and quality expectations.

The tolling arrangements, when finalized with CAPP in June 2007, will provide long-term rate design certainty for shippers. A further benefit of the rolled-in approach is that shippers are not required to enter into long-term contractual commitments.

Environmental and socio-economic impacts of the Project will be minimized and the risk of construction delays reduced given that the construction of the pipeline in Canada follows existing EPI ROW or other ROWs for approximately 98% of its length.

## 2.8 Industry Support

EPI's initial discussions with industry began in early 2006. As the discussions progressed it became clear to EPI that there was broad industry support and a preference for a rolled-in tolling approach whereby Alberta Clipper would be integrated with and form part of the existing Enbridge Mainline System. As a result, beginning in September 2006 EPI began holding extensive discussions with individual producers, marketers, and with CAPP about the Project scope, timing and commercial terms. CAPP represents the upstream oil and natural gas



industry in Canada and its 150 member companies produce more than 95% of Canada's crude oil.

EPI and CAPP are currently finalizing a Term Sheet detailing their settlement on the commercial terms for the Project. This Term Sheet will be filed with the NEB once it has been approved by the CAPP Board of Governors and the EPI Board of Directors. These approvals are expected by the end of June 2007.



### **3 ENGINEERING MATTERS**

EPI has prepared an engineering report describing the engineering design, construction and operation of the proposed Project. The engineering report is provided in Appendix 3-1.





## 4 LANDS INFORMATION

The Project involves the construction of a new 1,074 kilometre 914 mm OD (NPS 36) pipeline from Hardisty, Alberta to the Canada / United States border near Gretna, Manitoba. Approximately 98% of the pipeline will be constructed within or alongside and contiguous to existing EPI ROW or other ROWs. Approximately 22.5 kilometres of new ROW will be required that does not parallel an existing linear disturbance.

### 4.1 Lands Information for the Pipeline

In order to construct, operate and maintain the pipeline and facilities, land must be acquired from private landowners and the Crown in Alberta, Saskatchewan and Manitoba. The total land area required for the pipeline is shown in Table 4-1. There are approximately 112 parcels of land that are owned by the Crown, a summary of which is shown in Table 4-2. The locations of Crown Lands are shown in Appendix 4-1.

**Table 4-1: Estimated Land Area Required for the Pipeline**

Facility	Area (hectares)
Permanent right-of-way	1,272
Temporary workspace	2,625
<b>Total Area</b>	<b>3,897</b>

**Table 4-2: Crown Land Areas**

Province	Area (hectares)
Alberta	12.5
Saskatchewan	78.9
Manitoba	0.4

#### 4.1.1 New Permanent Right-of-Way Requirements

The new pipeline construction will be within or alongside and contiguous to EPI's existing ROW or other ROWs for 98% of its length. The objective will be to achieve a consistent permanent ROW width of 36.6 metres along the entire route. As a result of previous EPI expansion projects, EPI has already acquired the necessary ROW along sections of the proposed route. For the majority of the route, additional easements to acquire approximately 18.3 metres of new permanent ROW will be required. Accordingly, the width of the new permanent ROW required for this Project will vary in order to create a contiguous 36.6 metres of ROW along the pipeline route. The estimated area required for the permanent ROW is 1,272 hectares.

#### **4.1.2 Temporary Workspace Requirements**

EPI requires temporary workspace that would be adjacent to the new and existing ROW and would be approximately 22 metres in width. The total combined width of the permanent ROW and temporary workspace required for construction would be about 40 metres. In the event that EPI is able to construct the pipeline with other EPI projects, EPI would require a further five metres of temporary workspace that would be adjacent to the new and existing ROW. The total width of the permanent ROW and temporary workspace would then generally be between 40 and 45 metres. For further details, see Appendix D of Section 3.

#### **4.1.3 Lands Required for Pumping Facilities**

EPI proposes to install new pump units at eight existing EPI pump stations along the proposed pipeline in Alberta, Saskatchewan and Manitoba. No new lands will be required.

One new pump station will be required near the community of Rowatt, Saskatchewan, which is south of Regina. Approximately two hectares of fee lands will be needed for the proposed new pump station and the rights to these lands will be acquired by means of an option to purchase.

#### **4.1.4 Valve Sites**

Forty-six valve sites are required for the pipeline, all built within the boundaries of the permanent ROW utilized or acquired for the Project. The total land needed for valve sites is estimated at two hectares. A preliminary list of block valve locations is illustrated in Section 3.0, Appendix A Table A-3. EPI intends to enter into surface lease agreements with affected landowners or occupants in relation to these valve sites.

#### **4.1.5 Other Requirements**

Land will also be required for construction infrastructure such as stockpile sites. The specific requirements for such lands will be identified as construction planning and detailed engineering progress. At this time, the estimated requirement for construction infrastructure is a total of 40 hectares required for four stockpile sites. No new land is anticipated for power lines as existing infrastructure will be utilized and the new Rowatt pump station is adjacent to existing power lines.

The proposed pipeline will cross linear facilities including rivers, roads, highways, power lines, railways, oil and gas pipelines, and other utilities. EPI will design its pipeline and obtain consents from each third party owner of the linear facilities in accordance with requirements of applicable legislation.

#### 4.1.6 Departures from Existing Right-of-Way

EPI proposes four material departures from existing ROW as summarized in Table 4-3.

**Table 4-3: Summary of Pipeline Route Departures from Existing EPI Right-of-Way**

Name	Approx. Length of Deviation from Existing EPI Right-of-Way (km)	Contiguous Third Party Utility Length (km)	Third Party Name and Contiguous Length (km)	Non-contiguous Right-of-Way Required
Milden, SK	4.7	3.7	TransGas 3.7	1.0
Regina, SK	77.4	72.5	Cochin/Alliance 23.9 Conoco Phillips 1.7 Alliance 0.2 SaskPower 10.9 CNR 1.3 TCPL 34.5	4.9
Kipling, SK	8.7	0	N/A	8.7
Wawanesa (Souris R. valley), MB	7.9	0	N/A	7.9
<b>TOTAL</b>	98.7	76.2	76.2	22.5

These proposed departures from the existing ROW address concerns raised by the land survey in order to reduce the impact on commercial and residential developments.

#### 4.2 Land Rights

EPI intends to obtain all necessary land rights by negotiating directly with the registered owners of the land for the necessary rights to construct, operate and maintain Alberta Clipper. Based on the current pipeline routing, the number of private landowners is estimated to be about 525 and the number of tenants is estimated to be about 315.

#### 4.3 Section 87 Notices

Notices will be served on owners of lands required in connection with the pipeline in accordance with Section 87(1) of the *NEB Act*. Notices will describe the lands required, the compensation offered and all other details as required by the *NEB Act*. Along with this notice, landowners will receive a copy of the Board publication titled *Pipeline Regulation in Canada: A Guide for Landowners and the Public*. A sample copy of the notice to be served on owners of land pursuant to Section 87(1) of the *NEB Act* is included in Appendix 4-2. A detailed Project route map over the lands of each particular landowner will accompany these notices.

## 4.4 Land Acquisition Process

Project land acquisition will comply with the provisions and regulations of the NEB, including Section 87 of the *NEB Act*. EPI will apprise landowners of the likely impacts of construction and negotiate fair and reasonable compensation in the form of direct reclamation or monetary equivalent. In special or commercial situations, EPI may consult with a appropriately qualified professional to assess potential impacts and to provide advice to resolve reclamation procedures and quantify fair and reasonable compensation.

Disagreements with landowners as to land rights or the amount of compensation to be paid for the acquisition of lands, if not settled through direct negotiations, will be addressed in accordance with the negotiation or arbitration procedures set out in the *NEB Act*.

The land acquisition agreements to be used by EPI for the pipeline will also adhere to Section 86(2) of the *NEB Act*, including:

- EPI will pay landowners for permanent ROW and temporary workspace;
- EPI will review, with the landowner, the amount of compensation paid for permanent ROW; and
- EPI will indemnify and compensate landowners for damages caused by its operations.

EPI land agents have met with and acquired environmental survey consents from the majority of landowners and occupants of the lands directly affected by the Project. To date, no notices pursuant to Section 87(1) of the *NEB Act* have been served on landowners. It is expected that the land acquisition process will begin in Q2 2007 and is expected to be completed by October 2008 as noted below:

**Table 4-4: Land Acquisition Activities**

Dates	Activities
October, 2006 to March, 2007	Title Search, Line Lists, Survey Consents, Appraisals, Land Occupancy and Use Report, preparation of Section 87(1) notices and land acquisition documents.
May, 2007 to October, 2008	Land acquisition, includes serving of the Section 87(1) notices, acquisition of easements, permits and preparation of construction line list.
Prior to Construction 2008	Filing the line list, demonstrating that necessary land rights have been acquired.

If and when a Certificate of Public Convenience and Necessity has been issued for the Project, EPI will prepare and submit to the NEB a Plan, Profile and Book of Reference. In addition, notices will be served pursuant to Section 34(1) of the *NEB Act*, on all owners of lands proposed to be acquired for the Project.

## **4.5 Land Acquisition Agreements**

In addition to the sample Section 87(1) Notice, samples of the following forms of land acquisition and use agreements are attached in Appendix 4-3:

- Form of Easement Agreements; and
- Form of Agreement for Temporary Working Space.



## 5 ENVIRONMENTAL AND SOCIO-ECONOMIC ASSESSMENT

Tera Environmental Consultants (“TERA”) in cooperation with Jacques Whitford Limited, Applied Aquatic Research Ltd., Clearstone Engineering Ltd., Decision Economics Consulting Group, and Mentiga Pedology Consultants Ltd., has prepared a detailed Environmental and Socio-Economic Assessment (“ESA”) for the Project. A copy of the ESA is provided as Volumes II and III of this Application.

The ESA was prepared to meet the regulatory requirements identified in the NEB Filing Manual (2004) as well as Sections 16(1) and 16(2) of the *CEAA*. The NEB is a Responsible Authority under the *CEAA*. The NEB also has an independent mandate to consider and take into account any potential environmental and socio-economic impacts of the Project under the provisions of the *NEB Act*.

The proposed new pipeline is located within or alongside and contiguous to existing EPI ROW or other ROWs for 98% of its length. Only 22.5 kilometres of new ROW that is not alongside and contiguous to an existing ROW is required. Since the proposed pipeline requires less than 75 kilometres of new ROW, a Comprehensive Study is not required. Accordingly, the environmental assessment should proceed by way of an environmental screening.

The ESA describes, among other things:

- the route and site selection process;
- the current environmental and socio-economic conditions along the proposed pipeline route and in the vicinity of the proposed facility modifications;
- potential environmental and socio-economic impacts, mitigation measures and predicted residual effects, as well as an assessment of their significance;
- potential cumulative effects as well as an assessment of their significance;
- environmental education, inspection and monitoring policies to be applied during construction and operation of the proposed Project as well as the proposed follow-up program as warranted; and
- plans to address any knowledge gaps and to carry out supplemental environmental studies.

The ESA concludes that the environmental management strategy for the Project will avoid, eliminate and / or minimize potential effects arising from the Project. The strategy includes measures such as: appropriate routing; scheduling of activities to avoid sensitive periods; development of detailed, practical and





effective mitigative strategies and contingency measures to address site-specific and general issues; mitigation for residual and cumulative effects; environmental inspection and orientation during construction; and the use of supplemental studies. Based on the findings, the ESA concludes that the Project will not have significant residual and cumulative environmental and socio-economic effects.

## **6 PUBLIC CONSULTATION AND ABORIGINAL ENGAGEMENT**

The information presented in this section reflects public consultation and Aboriginal engagement up to and including May 15, 2007, although such consultation is continuing and will continue throughout the Project. The public consultation program is described in Section 6.2 and the Aboriginal engagement program is described in Section 6.3. As Aboriginal communities were also included in the public consultation process, references to those contacts are also included in Section 6.2.

### **6.1 Overview**

Enbridge is committed to timely and meaningful dialogue with all stakeholders, (including landowners and communities) as well as indigenous peoples. Through its public consultation and Aboriginal engagement programs, Enbridge has provided information on the proposed Project to stakeholders and has considered the input received. Where possible and practical, changes have been made to Project design and routing as a result of that input.

Public consultation and Aboriginal engagement programs will be ongoing throughout the life of the Project. Updates will be provided to regulatory authorities and interested parties, as may be appropriate. As EPI is in the midst of a major expansion program, consultation activities for the Project have overlapped with those of other projects; including the Southern Lights Project, the Alida to Cromer Capacity Expansion Project (ACCE) and the Line 4 Extension Project. Overlapping or joint consultation was undertaken in an attempt to provide stakeholders with an efficient and convenient means to acquire information relating to each of the Enbridge projects planned in their vicinity.

### **6.2 Public Consultation**

#### **6.2.1 Public Consultation Program Principles and Goals**

The public consultation program for the Project is based on regulatory requirements and Enbridge's Corporate Social Responsibility ("CSR") Policy (see Appendix 6-1). The CSR Policy recognizes the value and importance of public consultation and stakeholder engagement as a key component of sound business practice. Public consultation for the Project therefore has been guided by the following principles:

- Stakeholders will be informed early in the process about Enbridge's proposed activities;

- Enbridge will seek stakeholder input on projects or activities potentially affecting them and on the associated environmental and social impact assessments;
- Enbridge will engage stakeholders early in the development and planning process to learn about community goals and perspectives, and take those into account in decision-making;
- Stakeholder consultation processes will be transparent and open;
- Enbridge will endeavor to learn about and respect local, historical and traditional knowledge and economies; and
- Enbridge will develop and maintain ongoing dialogue with stakeholders through all Project stages to increase knowledge of the effects of its business activities, develop balanced standards and expectations, and seek solutions to identified concerns.

### **6.2.2 Aboriginal Consultation Protocol**

Where applicable, Enbridge carries out Aboriginal consultation programs for its proposed projects to facilitate a shared understanding of mutual interests and potential project effects and to develop appropriate courses of action. Appropriate notification and consultation also support achievement of Enbridge's corporate policies and the principles set out in Enbridge's Indigenous Peoples Policy (see Appendix 6-2), while also ensuring compliance with regulatory requirements. In keeping with our Indigenous Peoples Policy, where appropriate, Enbridge collects information about, and acts on, traditional use and traditional knowledge information in close consultation with Aboriginal community leaders and elders. For detailed information on the Aboriginal engagement and consultation program for this Project, please see Section 6.3.

### **6.2.3 Design of the Public Consultation Program**

#### **a) Public Consultation Program Scope**

The scope and type of consultation processes differs, depending on the particular goals, time frames and levels of stakeholder concern or interest in a proposed project or other matter of public interest. Such variables affect consultation program design. In designing the public consultation program, EPI assessed the potential impacts of the Project to determine expected levels of public interest or concern. The nature and type of the work, as proposed at the time, was also taken into account including:

- The Project is to occur primarily within or alongside and contiguous to the existing EPI ROW;
- Approximately 98.7 kilometres in total of new ROW will be required near Regina, Mildred and Kipling, Saskatchewan and near Wawanessa (Souris River valley), Manitoba where the route will deviate from Enbridge's

existing ROW. All but 22.5 kilometres follow an existing linear disturbance;

- New pump units will be constructed at eight existing Enbridge pump stations between Hardisty and Gretna;
- One new pump station will be constructed near Rowatt, Saskatchewan which is south of Regina; and

**b) Joint Activities with the Southern Lights Pipeline Project**

The design of the public consultation program for the Project took into account the consultation program for another Enbridge project that is subject to a separate NEB application – the Southern Lights Project. Numerous stakeholders are common to both Projects, given the Projects' similar timelines and geographical footprint. In order to minimize the inconvenience for the public, provide more context and facilitate greater understanding of each Project, the consultation programs for each were carried out jointly. The joint activities provided information about both Projects through a combination of correspondence, communication materials and community open house meetings.

**c) Public Consultation Program Objectives**

The Project-specific public consultation program was designed and implemented to ensure all parties that may be directly or adversely affected by the Project were engaged early and were provided with detailed and timely Project information.

The consultation program was also designed to ensure that interested parties had sufficient opportunity to respond with comments, questions or concerns and, if they so chose, to meet in person with Enbridge representatives to discuss issues or obtain further information. Other objectives of the consultation program are to:

- Identify all key stakeholders in accordance with regulatory requirements, including any potentially affected First Nations or Métis interests;
- Utilize personal consultations and public notification to effectively reach stakeholders and provide them sufficient opportunity to learn about the Project and, if desired, provide input into the Project planning and environmental assessment process;
- provide identified stakeholders advance notification and information about the Project and, as events require, updated information in the time leading up to the Application filing;
- identify stakeholders' issues of interest, provide the means for comment and input and, where possible, address concerns raised;
- document concerns raised throughout the consultation program, and how they were considered and incorporated into Project planning; and
- explore ways in which the Project may be able to contribute positively to surrounding communities.

**d) Complement to Existing Public Awareness Program**

The consultation program was also designed in the context of, and to complement, the Public Awareness Program already in place relating to Enbridge’s existing pipeline operations. The Public Awareness Program involves personal and direct dialogue at least once every three years with the landowners and occupants along the ROW. During these discussions, the landowners and tenants are provided with information relevant to owning or residing on land through which a pipeline ROW runs. While the materials left behind vary, the information consistently covers pipeline safety and integrity, what to do (and not do) in an emergency, knowing the warning signs, smells, and sounds that may be associated with a pipeline leak, Enbridge’s environmental protection practices, and general information about easement agreements and having a pipeline ROW on one’s property. In other years, Enbridge distributes informational packages to every landowner on an annual basis.

As a result of the long operational history and ongoing communication programs, Enbridge is well known to most of those living and working along the Project route. Enbridge also participates in joint industry initiatives such as conferences, safety seminars, and sessions with contractors that conduct work around pipelines.

To supplement Enbridge’s existing Public Awareness Program, a print and radio advertising campaign ran in April and May, 2007 in more than 50 community newspapers and 25 radio stations along the Enbridge ROW in Alberta, Saskatchewan and Manitoba. These additional outreach efforts are intended to better address issues and concerns raised by some landowners, increase understanding and awareness of the company’s commitments to safe and responsible pipeline operations and the value Enbridge places on its relationships with landowners.

The advertising (see Appendix 6-3) directs landowners to visit the Enbridge Inc. website for more information ([www.enbridge.com](http://www.enbridge.com)) or contact the company directly using a toll-free number. The website content is in a section dedicated to Canadian landowners and includes information on:

- Understanding the right-of-way;
- Understanding the safety zone;
- Call before you dig;
- Pipeline safety;
- Frequently Asked Questions (FAQ); and
- How to contact Enbridge.

**e) Stakeholder Identification**

Enbridge identified a range of stakeholder interests in designing the public notification and consultation process for the Project, including individuals, groups,

communities, non-governmental organizations, and government agencies and authorities. The potentially affected persons and groups to be notified and consulted therefore included landowners and tenants in proximity to the locations and ROW areas where Project work is proposed. Landowners and tenants within 200 metres of existing Enbridge ROW or proposed ROW were contacted. The 200 metre radius was established as being an appropriate distance from the existing and proposed ROW to ensure all those directly affected were consulted about the Project. The stakeholder identification process was also supported with input from Enbridge's Government Relations, Aboriginal Affairs and Land and ROW groups. As additional stakeholders were identified or came forward during the consultation process they were included in the consultation program.

**f) Methods and Timing of Consultation**

Enbridge employed the consultation methods determined to be the most appropriate based on potential impacts, the environmental and socio-economic characteristics of the areas where work is proposed, and the information needs and consultation interests of each stakeholder. As a result of these considerations, a variety of consultation methods were used including Project notification and information mailings, personal contacts (primarily with potentially affected landowners, government authorities and Aboriginal groups), a toll-free Project telephone line, website communications, and a series of community open houses. In all cases, the identified stakeholder interests and their information needs determined the consultation methods used.

Public notification began in September 2006, with the mail-out of a letter to landowners along the proposed ROW. The primary purpose of the letter (see Appendix 6-4), was to advise recipients about the proposed Alberta Clipper and Southern Lights Projects and notify them of upcoming land survey work along or nearby EPI's existing ROW, the potential need for new ROW, and temporary construction workspace.

A number of other mailings, telephone calls, in-person contacts and community open houses have been undertaken. Details of the consultation program implementation and associated activities are provided in Section 6.2.4. Enbridge will continue its stakeholder consultation and communications throughout the Project.

**g) Stakeholders' Information Needs**

Enbridge's assessment of stakeholders' information needs indicated that detailed information about the proposed Project construction work and its timing was required. Other information needs included an outline of the reasons for the Project, NEB and regulatory process information, environmental management information, and how stakeholders could obtain more information and become involved in the consultation and regulatory processes (please refer to Section 6.2.4 for details).

**h) Process for Responding to Issues and Concerns**

Enbridge strives to respond in a timely manner to issues and concerns brought forward by stakeholders. Contacts by stakeholders are usually responded to in the same manner received. For example, phone calls are responded to by phone and letters received by Enbridge are responded to with a reply letter. Additional follow-up may take place via personal meetings, as appropriate. Communication with stakeholders is aimed at resolving the concern(s) to the extent possible.

**i) Future Consultation**

As indicated in the consultation principles previously outlined, Enbridge will continue the Project public consultation, stakeholder and Aboriginal engagement activities throughout the Project life cycle, from the development and planning, regulatory application, and construction phases through to start-up and operation of the new facilities. Once the facilities are in operation, stakeholder communications and consultation are maintained through the Public Awareness Program and our other ongoing contacts with stakeholders.

**6.2.4 Consultation Program Implementation**

Using the consultation program design, the following activities were undertaken: distribution of the Preliminary Information Package; mail outs of letters of notification and Project newsletters; open house advertising and community open house information sessions; website development; toll-free message line; and the development of a stakeholder and issue database. Details of each of the consultation activities are provided below.

**a) Preliminary Information Package Distribution**

The Preliminary Information Package for the Project was filed with the NEB on October 25, 2006, and sent to the following Government Agencies:

- Canadian Environmental Assessment Agency (Head Office); and
- Canadian Environmental Assessment Agency (Alberta and Northwest Territories Office).

The Preliminary Information Package was also sent to the following Aboriginal groups by registered mail on December 18, 2006:

**Table 6-1: Aboriginal Groups Provided Preliminary Information Package**

Birdtail Sioux Dakota Nation	Pasqua First Nation #79
Ochapowace First Nation	Peepeekisis First Nation
Canupawakpa Dakota Nation	Pheasant Rump Nakota First Nation
Battlefords Tribal Council	Piapot First Nation
Dakota Ojibway Tribal Council	Poundmaker First Nation
Ermineskin Tribe	Roseau River Anishinabe First Nation
Federation of Saskatchewan Indian First Nations	Sakimay First Nation



Kahkewistahaw First Nation	Samson Cree Nation
Little Black Bear Band	Sioux Valley Dakota Nation
Louis Bull	Muscowpetung First Nation
Manitoba Métis Federation SW Region	Swan Lake First Nation
Métis Nation of Alberta Region 2	White Bear First Nation
Métis Nation of Alberta Region 3	Standing Buffalo First Nation
Long Plain First Nation	Whitecap Dakota First Nation
Métis Nation Saskatchewan Southeast Region 3	Carry the Kettle First Nation
Montana First Nation	Cowessess First Nation
Ocean Man First Nation	Dakota Plains First Nation
Swan Lake First Nation	Star Blanket First Nation
Okanese First Nation	

Recipients of the Preliminary Information Package were invited to contact Enbridge if they had any questions or concerns regarding the Project.

**b) Mail Outs and Project Newsletters Distributions**

Mail outs and newsletter distribution activities are described in the Table 6-2 below:

**Table 6-2: Summary of Mail Outs and Project Newsletter Distribution**

Date	Method	Stakeholders contacted	Purpose	Information provided
September 1, 2006	Registered mail	Landowners and tenants on the Alberta Clipper mailing list between Hardisty, AB and the U.S. border near Gretna, MB.	To inform landowners that Enbridge representatives would be visiting to discuss land surveying process.	Land survey letter which included: an overview of the Alberta Clipper Project; notification of upcoming land survey work; Project route map; and the NEB brochure, "A Proposed Pipeline or Power Line Project: What You Need to Know."
October 24, 2006	Registered mail	Municipal and provincial government representatives in AB, SK and MB.	To inform municipal and provincial government representatives that information on the two new proposed Projects and the survey process was sent to members in their communities.	Introductory letter from Enbridge Government Relations representative; Copy of the September 1, 2006 Land Survey Letter; Project route map; NEB brochure, "A Proposed Pipeline or Power Line Project: What You Need to Know."



Date	Method	Stakeholders contacted	Purpose	Information provided
October 25, 2006	Fax	Associations and ENGOs, Municipal and regional government departments.	To provide information on the two new proposed Projects prior to being contacted by consultants regarding work on ROW.	Introductory letter from Enbridge Government Relations representative; Copy of September 1, 2006 Land Survey Letter; Project route map; NEB brochure, "A Proposed Pipeline or Power Line Project: What You Need to Know."
November 14, 2006	Fax	Newly elected government officials resulting from SK and MB municipal elections.	The previous government mail out (of Oct. 24) was redistributed to new government contacts as a result of the municipal elections in SK, AB and MB.	Introductory letter from Enbridge Government Relations representative; Copy of September 1, 2006 Land Survey Letter; Project route map; NEB brochure, "A Proposed Pipeline or Power Line Project: What You Need to Know."
November 20, 2006	Registered mail	Letters to landowners between Hardisty, AB and Gretna, MB, governments, media, other "non-property" stakeholders.	To widely introduce the Alberta Clipper Project and communicate the open house schedule for AB, SK and MB.	Letter from Project Manager; Community open houses schedule; Project route map; NEB Brochure, "A Proposed Pipeline or Powerline Project: What You Need to Know."
November 24, 2006	Registered mail	Aboriginal interests, using list compiled by Enbridge Aboriginal Affairs group.	To communicate and notify Aboriginal interests about the Alberta Clipper Project.	Letter from Project Manager; Community open houses schedule; Project route Map; NEB Brochure, "A Proposed Pipeline or Power Line Project: What You Need to Know."
November 30, 2006	Canada Post Express Post	Letter to landowners and tenants between Hardisty, AB and Gretna, MB, Governments, Media, and other "non-property" stakeholders.	To continue the information provision process.	Letter from Project Manager; Enbridge <i>Corporate Social Responsibility Report 2006</i> ; Enbridge Expansions Newsletter: Volume 1.
December 13, 2006	Canada Post Express Post	145 stakeholders who did not receive the Nov. 20 mail out due to returned mail*, including: Landowners; Media; Municipal and provincial government officials; and non-property stakeholders	To ensure no stakeholders were missed and that recipients were informed of the open houses schedule. Enbridge used a variety of means to communicate the open houses schedule in addition to the mail out: including advertising, posters and media interviews.	Apology letter regarding returned mail and resulting delay; Copy Nov. 20, 2006 letter from Project Manager; Open house schedule; Project route map; NEB Information Brochure, "A Proposed Pipeline or Power Line Project: What You Need to Know."

Section 6 – Public Consultation and Aboriginal Engagement

Date	Method	Stakeholders contacted	Purpose	Information provided
December 18, 2006	Registered Mail	Aboriginal groups (see Section 6.2.4)	To continue the Project information provision process.	Letter from Aboriginal consultation lead; Alberta Clipper Preliminary Information Package.
January 11, 2007	Canada Post	21 Manitoba landowners who raised issues during initial open houses.	Invitation to landowners to attend meetings on Jan. 24 and 25, 2007 to discuss issues of interest and Enbridge Expansions Newsletter: Volume 2.	Letter from Enbridge Manager of Lands and ROW inviting recipients to attend one of three meetings. Landowners were provided opportunity to provide input on meeting objectives, topics and format, and meeting times, dates and locations.
January 23, 2007	Regular mail	All identified landowners, media, governments, and “non-property” stakeholders.	To continue the information provision process.	Enbridge Expansions Newsletter: Volume 2; Pipelines Fact Sheet.
April 4, 2007	Canada Post Express Post	35 landowners adjacent to the proposed ROW (within 200 metres) identified during regular update to the Alberta Clipper mailing list between Hardisty, AB and the U.S. border near Gretna, MB.	Introduce the Alberta Clipper Project and share important information about our plans, including upcoming survey work.	Introductory letter with overview of the Alberta Clipper Project and notification of upcoming land survey work; Project route map; Enbridge Expansions Volume 1 and 2 newsletters, Pipeline Fact Sheet, Pump Station Fact Sheet, and the NEB brochure, “A Proposed Pipeline or Power Line Project: What You Need to Know.”
April 20, 2007	Canada Post Express Post	Landowners on, near or adjacent to (within 200 metres) of proposed route change south of Regina.	Introduce the Alberta Clipper Project and share important information about our plans, advise of proposed route change and upcoming survey work, invite landowners to attend upcoming open house.	Letter introducing Alberta Clipper Project and explaining the proposed route change; map showing route south of Regina, Project route map; Enbridge Expansions Volume 1 and 2 newsletters, Pipeline Fact Sheet, Pump Station Fact Sheet; and the NEB brochure, “A Proposed Pipeline or Power Line Project: What You Need to Know.”
April 25, 2007	Canada Post Express Post	Local governments and Rural Municipalities in the Regina, SK area.	Advise and share information about the proposed change to route pipeline south of Regina.	Letter introducing Alberta Clipper Project and explaining the proposed route change; map showing route south of Regina, Project route map; Enbridge Expansions Volume 1 and 2 newsletters, Pipeline Fact Sheet, Pump Station Fact Sheet; and the NEB brochure, “A Proposed Pipeline or Power Line Project: What You Need to Know.”
April 27, 2007	Canada Post Express Post	Landowners on Alberta Clipper mailing list no longer affected by Project as a result of changing to route south of Regina.	Advise of the route change and thank stakeholders for engaging in consultation process	Letter advising of proposed changed to route south of Regina; map showing route south of Regina.

**c) Community Open House Information Sessions**

Enbridge uses community open house information sessions as a forum to discuss proposed projects personally with interested or affected landowners and stakeholders. As noted, because almost all the pipeline construction work for the Canadian portion of the proposed Project is to occur within or alongside and contiguous to the existing EPI ROW, and within similar regulatory and construction timelines, joint open houses were held. A total of 12 open houses were held initially in Alberta, Saskatchewan and Manitoba, with locations determined based on the following criteria:

- Communities located in close proximity to the ROW where Project work is to occur;
- Locations where proposed Project work is to occur;
- Communities with a suitable facility to hold the event (typically communities with a population greater than 1,000);
- Communities spaced evenly along the ROW and close enough to one another to avoid, as much as possible, stakeholders having to undertake long drives to reach the open house nearest to them; and
- Locations suggested by Enbridge Land and ROW Department.

The following Table 6-3 provides the dates and locations of the initial series of open house information sessions, as well as the number of registrants at each event.

**Table 6-3: Open House Summary**

<b>Open Houses Overview - Saskatchewan</b>		
<b>Date</b>	<b>Location</b>	<b>No. of Registrants</b>
Monday, November 27, 2006	Kerrobert, Saskatchewan	22
Tuesday, November 28, 2006	Rosetown, Saskatchewan	34
Wednesday, November 29, 2006	Craik, Saskatchewan	11
Thursday, November 30, 2006	Kipling, Saskatchewan	23
Friday, December 1, 2006	White City, Saskatchewan	30
	Total Saskatchewan	120



Open Houses Overview - Manitoba		
Date	Location	No. of Registrants
Monday, December 4, 2006	Gretna, Manitoba	40
Tuesday, December 5, 2006	Morden, Manitoba	51
Wednesday, December 6, 2006	Glenboro, Manitoba	33
Thursday, December 7, 2006	Souris, Manitoba	31
Friday, December 8, 2006	Cromer, Manitoba	43
	Total Manitoba	198
Open Houses Overview - Alberta		
Date	Location	No. of Registrants
Monday, January 8, 2007	Hardisty, Alberta	42
Tuesday, January 9, 2007	Provost, Alberta	17
	Total Alberta	59
	<b>Grand Total Attendance</b>	<b>377</b>

Each open house was an informal event where Project maps, information boards and other materials were displayed, Project information hand-outs were available, and various Enbridge experts were present to answer questions. Approximately 30 tabletop displays were set up at each open house, as well as detailed mapping that covered the overall route and site-specific mapping relevant to the particular community.

Copies of the open house displays, maps, and other communication materials used in connection with the open houses are attached as Appendix 6-5.

An additional open house information session was held in Grand Coulee, Saskatchewan on May 3, 2007 to share information about a proposed route change in the Regina area (see Section 6.2.6(d)). The format of the event was the same as that for the initial series of open houses. The display boards were modified slightly to include only Alberta Clipper information, as the Southern Lights ROW was not affected by the proposed route change. A new display board was added to show the proposed route south of Regina. A total of 27 people registered during the event. For more details, see Appendix 6-9 for a summary.

#### d) Open House Advertising

Advertising (see Appendix 6-6) was created and placed in local newspapers to widely promote the time, date and location of upcoming open houses, and solicit attendance. The advertisements also provided Project details and a map showing the proposed pipeline ROW. The following Table 6-4 lists the newspapers and advertising placement dates. Posters of the advertisements

were also placed at key buildings within each community where the open houses were scheduled.

To reinforce public awareness created by the newspaper advertising, poster-sized versions of the advertisements were also placed at key buildings within each community where the open houses were scheduled.

In addition, the majority of Aboriginal groups identified by Enbridge were informed of the open houses. While some did participate, others elected to develop their own process. See Section 6.3 for further details.

**Table 6-4: Open House Advertising**

Publication	Province	Placement Timing
Provost News	Alberta	Week of December 25, 2006
Sedgewick Community Press	Alberta	Week of January 1, 2007
Wainwright Edge	Alberta	Week of January 1, 2007
Regina Leader Post	Saskatchewan	Week of November 20, 2006
Craik Weekly News	Saskatchewan	Week of November 20, 2006
Kerrobert Citizen	Saskatchewan	Week of November 20, 2006
Kipling Citizen	Saskatchewan	Week of November 20, 2006
Rosetown Eagle	Saskatchewan	Week of November 20, 2006
Morden Times	Manitoba	Week of November 24, 2006
Altona Red River Valley Echo	Manitoba	Week of November 27, 2006
Baldur/Glenboro Gazette	Manitoba	Week of November 27, 2006
Reston Recorder	Manitoba	Week of November 27, 2006
Souris Plaindealer	Manitoba	Week of November 27, 2006
Virden Empire-Advance	Manitoba	Week of November 27, 2006
Winkler Times	Manitoba	Week of November 27, 2006

The May 3, 2007 open house in Grand Coulee, Saskatchewan held to share information with landowners and other stakeholders on the proposed route south of Regina was advertised in the Regina Leader-Post on Saturday, April 28, 2007. The advertisement included a colour map showing the proposed route south of Regina. A copy of the ad is included in Appendix 6-6.

**e) Project Website**

Information about the Project is available in several places on the [enbridge.com](http://www.enbridge.com) website. The information details the reasons for the proposed Project, route and locations, planned capacity, and provides specific province-by-province Project information and maps. Enbridge's website also provides contact information for interested parties wishing to e-mail or call Enbridge to obtain further information. The primary location for the Project information on Enbridge's website is:

<http://www.enbridge-expansion.com/expansion/>

Printouts of the pertinent Enbridge Expansions website pages are attached as Appendix 6-7.

**f) Toll-free Project Message Line**

A toll-free message line telephone number was provided in Project communication materials to enable callers to leave a voice mail message requesting information, posing questions or providing comments regarding the Project. Enbridge then responded to messages. The toll-free message line will continue to be monitored throughout construction until the Project is in-service, after which stakeholders will be referred to the Enbridge Operations department.

**g) Consultation Tracking and Database**

In order to keep a record of all consultation activities and provide timely follow-up to stakeholder questions and concerns, a stakeholder contact database was created to track stakeholder meetings, manage and record stakeholder requests, concerns and issues, and document the progress of the Projects. Forms for tracking consultations were created for use by Enbridge personnel and a database administrator has been dedicated to maintaining up-to-date records.

**h) Communications Materials and Information Provided to Stakeholders**

Information provided to date, includes the following:

- Enbridge company overview and background;
- Purpose of the Project;
- The Project details and specifications, including the proposed pipeline location and the anticipated new ROW required;
- The anticipated Project construction and in-service date timelines;

- Environmental protection and management policies and procedures followed by Enbridge during pipeline construction and operation;
- Information about the public consultation program, including how stakeholders could become involved and the Project toll-free telephone number;
- NEB contact information together with a description of the NEB's regulatory role and process for public consultation;
- Information on how to obtain more information from Enbridge, including the Enbridge website address; and,
- A map of the Project area, attached together with a copy of the NEB brochure: "A Proposed Pipeline or Power Line Project: What You Need to Know".

Copies of the letters, maps, Enbridge Expansions newsletters, web pages, and other communication materials used are attached as Appendices 6-4, 6-5, 6-6, and 6-7.

In response to questions from the toll-free Project line and the open houses, Enbridge developed a fact sheet on pipeline development, which included information about the construction, safety and monitoring of pipelines. In the second volume of the Enbridge Expansion newsletter, questions or areas of interest raised at the open houses were also addressed.

### **6.2.5 Stakeholders Contacted**

Further to the Stakeholder Identification process outlined in Section 6.2.3 previously, the following stakeholders have been contacted and engaged to date:

#### **a) Landowners and Tenants**

EPI contacted approximately 2,500 landowners and tenants owning or residing on land directly affected, and adjacent to, the ROW where the proposed construction is to occur. Those owning or residing on lands within 200 metres of the ROW were contacted by Enbridge using methods and on dates as described in Section 6.2.3. The 200 metre contact radius was established as being an appropriate distance from the existing and or proposed ROW to ensure all directly affected and adjacent landowners and tenants were reached.

#### **b) Local Governments**

The following municipal governments were contacted by Enbridge using methods and on dates as described in Section 6.2.4. In some cases, government contacts changed following municipal elections in Saskatchewan and Manitoba in 2006. In those instances, Enbridge provided the newly elected officials with copies of the Project consultation materials. Generally, municipalities were selected for their proximity to the pipeline rights-of-way where Project work would occur.

**Table 6-5: Local Governments Contacted by Province**

ALBERTA		
Camrose	Flagstaff County	Hardisty
Provost		
SASKATCHEWAN		
Bethune	Craik	Dodsland
Fairlight	Glenavon	Hazelwood
Herschel	Kennedy	Kerrobert
Kingsley	Kipling	Loreburn
Milden	Odessa	Plenty
Regina	Rosetown	White City
MANITOBA		
Argyle	Glenboro	Glenwood
Lorne	Manitou	Morden
Oakland	Pembina	Pipestone
Rhineland	Sifton	South Cypress
Souris	Stanley	Wallace
Winkler		

**c) Provincial and Federal Government Representatives**

The following provincial and federal government representatives were contacted by Enbridge using methods and on dates as described in Section 6.2.4. These government representatives and ministries were selected because in the case of elected representatives their constituency included part of the proposed Project geography, or because the ministry's area of responsibility included or was connected with the Project.

**Table 6-6: Provincial and Federal Government Representatives Contacted**

ALBERTA		
Title	Constituency	Location
MLA	Battle-River Wainwright	Wainwright
MP	Vegreville-Wainwright	Mannville
MP	Crowfoot	Camrose
MLA	Wetaskiwin-Camrose	Camrose
SASKATCHEWAN		
Title	Constituency	Location
MLA	Kindersley	Kindersley
MLA	Rosetown-Elrose	Rosetown
MLA	Thunder Creek	Meadow Lake
MLA	Indian Head-Milestone	Balgonie
MLA	Moosomin	Moosomin
MLA	Cannington	Alida
MLA	Regina Qu'Appelle Valley	Regina
MLA	Regina Wascana Plains	Regina
MP	Cypress Hills-Grassland	Swift Current



MP	Battlefords-Lloydminster	North Battleford
MP	Saskatoon-Rosetown-Biggar	Saskatoon
MP	Regina Qu'Appelle	Fort Qu'Appelle
MP	Regina-Lumsden-Lake Centre	Regina
MP	Wascana	Regina
MP	Souris-Moose Mountain	Estevan
MANITOBA		
Title	Constituency	Location
MP	Brandon-Souris	Brandon
MLA	Turtle Mountain	Winnipeg
MP	Portage-Lisgar	Portage La Prairie
MLA	Arthur Virden	Winnipeg
MLA	Minnedosa	Winnipeg
MLA	Pembina	Winnipeg
MLA	Emerson	Winnipeg

**d) Provincial and Federal Government Ministries Contacted**

Enbridge contacted the following during its consultation activities:

- Alberta Community Development (now Alberta Tourism, Recreation, Parks and Culture)
- Alberta Energy
- Alberta Infrastructure and Transportation
- Alberta Sustainable Resource Development
- Saskatchewan Agriculture and Food
- Saskatchewan Culture, Youth and Recreation
- Saskatchewan Environment
- Saskatchewan Highways and Transportation
- Saskatchewan Industry and Resources
- Saskatchewan Watershed Authority
- Manitoba Agriculture, Food and Rural Initiatives
- Manitoba Conservation
- Manitoba Culture Heritage and Tourism
- Manitoba Industry, Economic Development and Mines
- Manitoba Intergovernmental Affairs and Trade
- Manitoba Transportation and Government Services

- **Manitoba Water Stewardship**

In addition, TERA, on behalf of Enbridge, contacted provincial and federal agencies with a potential environmental and/or socio-economic related interest in the Project. For further information, see Section 3.1 of the ESA (Volume II of the Application).

**e) Aboriginal Communities Contacted**

Please refer to Section 6.3.

## **6.2.6 Overall Consultation Outcomes**

The following section summarizes the outcomes of consultation activities related to the Project to date:

**a) Outcomes of Open House Information Sessions**

The initial series of open house information sessions, in most cases, satisfied stakeholders information needs and desire to gain a better understanding of the Project. Enbridge also gained a better understanding of community views and obtained a range of input relevant to the Project.

Every open house attendee was given a one-page double-sided survey and was requested to complete it before leaving. The purpose of the survey was to gather feedback regarding the Project and the open house program itself. Questions were simple and designed to gather the opinions of the attendees on a variety of subjects.

The surveys used multiple choice and open-ended questions to ask respondents to identify what they perceived to be the greatest issues/concerns and benefits/opportunities associated with the proposed Projects.

Although some landowners expressed concerns, the majority of opinions were positive or neutral with respect to the Project. In Alberta, 83% of respondents said they were “supportive” or “neutral” with respect to the Project. In Saskatchewan, 69% of respondents gave “supportive” or “neutral” and in Manitoba, 71%. In no province was the total number of respondents opposed to the Project greater than 6%.

**Table 6-7: Exit Survey Response to “What is your view of the proposed Alberta Clipper Project?” - Initial Series of Open House Information Sessions**

Alberta (35 Surveys returned)		Saskatchewan (84 surveys returned)		Manitoba (133 surveys returned)	
“Supportive”	23	“Supportive”	44	“Supportive”	65
“Neutral”	6	“Neutral”	14	“Neutral”	29
“Not supportive”	0	“Not supportive”	5	“Not supportive”	6
“No opinion”	2	“No opinion”	12	“No opinion”	10
“No response”	4	“No response”	9	“No response”	23

A copy of the exit survey from the initial series of open house information sessions is included in Appendix 6-8.

The total number of surveys completed was 252, a completion rate of 67%. The following Table 6-8 indicates the survey completion rate broken down by province.

**Table 6-8: Exit Survey Completion Rate - Initial Series of Open House Information Sessions**

Province	Surveys completed / Number of registrants	Percentage
Alberta	35/59	56%
Saskatchewan	84/120	70%
Manitoba	133/198	67%

See Appendix 6-9 for a summary of exit survey questions and responses from the initial series of open house information sessions for the Project.

At the May 3, 2007 open house in Grand Coulee, Saskatchewan held to share information on the proposed route south of Regina a total of 17 exit surveys were completed, a completion rate of 63%. Survey respondents answered as follows:

Overall, what is your view of the proposed Alberta Clipper Project?

- “Supportive” - 41% (7 out of 17)
- “Neutral” - 41% (7 out of 17)
- “Not supportive” - 6% (1 out of 17)
- “No opinion” - 12% (2 out of 17)

What is your view of Enbridge’s plan to route Alberta Clipper south of Regina?

- “Supportive” - 53% (9 out of 17)
- “Neutral” - 29% (5 out of 17)
- “Not supportive” - 18% (3 out of 17)
- “No opinion” - None

A copy of the exit survey from the May 3, 2007 open house in Grand Coulee, Saskatchewan is included in Appendix 6-8.

**b) Issues and Concerns**

Concerns about the Project have been expressed by landowners, landowner groups, communities and governments. A summary of the most common issues and concerns raised as well as our responses are included in Table 6-9. In addition, correspondence related to concerns raised is in Table 6-10.

The Manitoba Pipeline Landowners Association (“MPLA”), affiliated with the Canadian Alliance of Pipeline Landowners Associations (“CAPLA”), has been formed in Manitoba. A number of its members attended the Manitoba open houses, submitted letters and voiced their concerns. Further details on the MPLA and Enbridge’s efforts to address its members’ concerns are discussed in Section 6.2.6(g).

Enbridge was asked by three separate rural municipalities (“RMs”) to meet and discuss landowner concerns that had been brought forward by their respective constituents. Enbridge met with the RMs and presented the issues and responses discussed in Table 6-9. A copy of the presentation is included in Appendix 6-11. The presentation is identical to the one given to landowners in Manitoba in a series of three workshops held at the end of January 2007. Following is a list of the meeting dates and locations:

- RM of Pipestone, January 24, 2007 (Reston, Manitoba);
- RM of St. Andrews, February 13, 2007 (Rosetown, Saskatchewan); and
- RM of Loreburn, February 27, 2007 (Loreburn, Saskatchewan).

Discussion at the meetings focused on concerns of landowners in each of the respective municipalities such as abandonment and crossing the ROW with farming equipment. Enbridge is not aware of any outstanding concerns.

An additional meeting was held with representatives of the Town of Outlook, the Outlook Chamber of Commerce, the RM of Ruby and the Whitecap First Nation in Outlook, Saskatchewan on March 19, 2007. The majority of the discussion focused on crossing the South Saskatchewan River. Enbridge representatives provided the presentation found in Appendix 6-11 to address other questions raised such as abandonment. Enbridge and the Town of Outlook subsequently exchanged letters on March 26, 2007 and April 11, 2007 as referenced in Table 6-10 in the following section.

EPI representatives met with six Members of Parliament from the following constituencies on April 18, 2007 to provide a general overview of the Project and respond to questions:

- Vegreville-Wainwright (Alberta)

- Blackstrap (Saskatchewan)
- Palliser (Saskatchewan)
- Saskatoon-Rosetown Biggar (Saskatchewan)
- Souris-Moose Mountain (Saskatchewan)
- Brandon-Souris (Manitoba)

No significant concerns were raised by the Members of Parliament. On April 18, 2007, EPI also met with representatives from Natural Resources Canada to provide a general overview of the Project and discuss a number of matters related to the Project.

**Table 6-9: Summary of Key Issues and Concerns to Date**

Issue/Concern	Enbridge Response
<b>Abandonment &amp; Restoration</b>	
What happens after Enbridge is finished using the pipeline?	Where no future use of the pipeline is anticipated, Enbridge may proceed with the process to abandon the pipeline. Abandonment of pipeline facilities is subject to regulatory approval and oversight. Enbridge will comply with abandonment regulations if and when pipelines and associated facilities are abandoned.
Could Enbridge abandon its pipelines and leave it up to me to deal with any problems?	The abandonment of a pipeline is the responsibility of the company that owns the pipeline, not the landowner. Easement agreements and regulations both address abandonment issues. Abandonment is subject to a regulatory application and approval process. Regulatory authorities and the pipeline company have a responsibility to ensure that any issues or concerns are addressed prior to abandonment approval.
The land needs to be restored to its original state after construction.	Enbridge is committed to restoring the land to as close to its original condition as possible following construction.
<b>Community Investment</b>	
How can my group or organization apply to Enbridge for funding?	Enbridge's community investments are guided by a core set of criteria. We consider support for and participation in community programs that are: based in communities where we operate within a 20 kilometre radius of our pipeline ROW; of prime importance to the community; of benefit to the greatest number of people; and of long-term significance to the community. Applications for funding must be completed on-line. Please see the Enbridge website at <a href="http://www.enbridge.com">www.enbridge.com</a> for more information about Enbridge's community investment policies and the company's on-line application form for donations and sponsorships.



Compensation	
Is Enbridge responsible for crop loss?	Enbridge is responsible to landowners for all damages suffered as a direct result of its operations. Enbridge will handle these cases on an individual basis to arrive at a mutually agreeable solution. We rely on the landowner to let us know if there is a situation we should look at. In order to properly assess the matter, we require notification prior to the crop being taken off the land.
How much compensation will landowners receive?	Compensation is discussed directly with landowners and is a matter between the landowner and the pipeline company. Enbridge pays fair compensation and have been dealing amicably with landowners for nearly 60 years. Some of the factors that are considered when assessing compensation for ROW are: market value of the lands, payment terms, loss of use, adverse effects, nuisance and inconvenience, and damages.
Landowners need to be fairly compensated. Compensation in the past has not been high enough.	Enbridge pays fair compensation and has been dealing amicably with landowners for nearly 60 years. Pipeline landowners are also fairly compensated for any potential damages that directly result from our operations. Enbridge compensates landowners in a fair and equitable manner, however it can be difficult to satisfy everyone when it comes to financial compensation.
Will landowners need to sign a confidentiality agreement?	It is not typical for Enbridge to require its landowners to sign a confidentiality agreement. If a landowner asks for confidentiality, we will respect that.
Will Enbridge pay an annual fee or rental for the pipeline ROW?	Lump sum, periodic or annual payments over a period of time for easement rights are always offered to the landowner at the time of obtaining access to the pipeline ROW. In most instances, landowners choose to receive the payment in one lump sum. Where the facilities are below ground, as in the case of a pipeline, Enbridge acquires rights using an easement. This ensures that the landowner maintains rights over the ROW allowing for its normal use of these lands.
What happens if my crops are damaged and if there are future crop losses?	Enbridge is responsible to landowners for all damages suffered as a result of its operations. Enbridge will handle these cases on an individual basis to arrive at a mutually agreeable solution. Enbridge will do its utmost to mitigate unsatisfactory situations or, if that is not possible, arrive at a compensation agreement that is fair to both parties. Enbridge maintains a standing commitment to work with landowners to address concerns related to our pipelines.
Will Enbridge pay for damages to landowners' property, such as compensation for trees that need to be removed or future losses, before construction takes place?	In general there are two types of compensation that Enbridge pays to landowners: compensation for the acquisition of the easement lands, the value of which takes into account those factors enumerated in section 97 of the <i>NEB Act</i> , and compensation for any damages caused as a direct result of construction and operations. Compensation for actual losses are

	not paid in advance because it is based on the loss suffered. Generally speaking, Enbridge is not prepared to pay for unproven damages in advance of them occurring.
Will Enbridge protect me and my family financially if a problem with the pipeline causes personal injury or property damage?	Generally, our easement agreements provide that Enbridge is responsible for all damages directly resulting from its operations. Even where easement agreements do not contain such language, as is the case with some of the older easement agreements, it is Enbridge's practice to compensate landowners for all damages directly resulting from its operations. In addition, Enbridge carries liability insurance that insures Enbridge for legal liability for personal injury and damage to the property of others arising out of Enbridge's operations. Enbridge's insurance program also includes coverage for property damage and personal injury arising from a pollution incident.
<b>Construction</b>	
How long will construction take?	The average construction time on each section of the ROW is dependant on the size of section under construction and, of course, on weather conditions.
When will construction begin in my area?	Construction is dependent on regulatory approval and could start in 2008 with expected completion in 2009. Enbridge will provide more information on the construction schedule as the Project moves ahead.
Will my land look the same after the pipeline is built?	Enbridge's stated objective is to restore your land to as close to its pre-construction condition as is possible. Some trees, buildings or other structures, which must be removed from the easement for construction, unfortunately cannot be replaced on the ROW. In these cases, appropriate compensation will be negotiated. Enbridge's inspectors and ROW representatives will follow-up with you to verify that site restoration on your land is completed and that you are compensated according to your agreement with Enbridge.
Will construction methodology and practices be negotiated with landowners before construction starts?	Enbridge will discuss with landowners the process, time-lines and procedures that it will follow prior to the start of construction. The construction methodologies and practices used by Enbridge meet or exceed the Canadian Standards Association Z662 and related standards.
Construction methodology and practices need to be negotiated and agreed to before construction begins. Will Enbridge talk to landowners about construction methodology and address site specific issues with individual landowners before construction starts?	Enbridge will discuss with landowners the process, timeline and procedures that it will follow prior to the commencement of construction. Enbridge will strive to minimize disruption and damage insofar as it is practicable to do so. Unique or specific requests of landowners may be included on the Construction Line List as appropriate.
<b>Employment Opportunities</b>	
How can I get a job working on the construction?	It is still very early in the Project. Most of the work and hiring will be done by our primary contractors and sub-contractors, including the pipeline construction company. As construction is not scheduled until 2008 (pending regulatory approval),



	<p>these companies have not yet been selected. We will be providing more information on employment opportunities in the future. You can also check our website for updates as the Project moves ahead or contact our toll-free Project line at any time for more information.</p>
<b>Environment</b>	
<p>How will Enbridge monitor the pipeline and prevent pipeline ruptures and spills?</p>	<p>Pipelines are a safe and practical transportation mode to move large quantities of petroleum and petroleum products. As an industry leader, Enbridge has a comprehensive and evolving preventive maintenance program, including around-the-clock computerized monitoring of pipeline flow, regular internal inspections of the line and aerial patrols of the ROW. Externally, Enbridge has implemented an educational outreach program for landowners and excavators regarding the locations of pipelines and the need for awareness and pipeline safety. Enbridge is an active and supportive member of First Call.</p>
<p>How will Enbridge minimize soil disturbance and damage?</p>	<p>Enbridge has detailed soil survey information along approximately 97% of the proposed route and, prior to construction, will have soils survey information for the entire route. The Environmental and Socio-Economic Assessment for the Project, referred to as the ESA, will provide detailed soil handling measures for the various land use and soil types encountered by the pipeline route. Contingency measures will also be included in the ESA to ensure that mitigative measures are employed in the event of a wide variety of contingency events such as wet/thawed soils, extended periods of dry weather, soil erosion and uneven soil boundaries. The ESA will also provide specific direction related to restoration of the pipeline right-of-way following construction. Enbridge will be assigning Environmental Inspectors to the Project to ensure that environmental protection measures committed to through the consultation and regulatory processes, are implemented and effective. Enbridge is planning to conduct post-construction monitoring for the first two growing seasons following construction. Any areas of reduced crop growth or other soil or vegetation problems noted during the monitoring programs will be promptly addressed.</p>
<p>How will Enbridge protect my land against weeds and other kinds of soil contamination?</p>	<p>Enbridge is aware of the potential for the introduction and spread of weeds and other contaminants during pipeline construction on agricultural lands. In order to minimize the potential for spreading weeds, Enbridge is planning to conduct a weed survey along the proposed route during the growing season prior to construction. The Environmental and Socio-Economic Assessment, referred to as the ESA, will identify the general mitigative measures to be implemented to prevent the spread or introduction of weeds or other contaminants. Upon completion, the weed survey will identify any specific mitigative measures to prevent the spread of weeds or other</p>



	<p>contaminants from areas of infestation to adjacent lands. The ESA will also note that only Canada No. 1 Certified is to be sown on areas to be seeded with agronomic species and the best available native seed grade will be used in areas where native seed is to be sown. As part of the post-construction monitoring program noted above, any areas of weed or other infestations will be noted and remedial measures will be implemented.</p>
<p>How will Enbridge ensure that groundwater sources are protected during construction and operation of the pipeline?</p>	<p>Enbridge has five existing pipelines along most of the proposed route. No material disruption of water resources has occurred during construction of these existing pipelines. In the event that a water resource is located along the proposed route that is used for livestock or human use, Enbridge will consult with the landowner to ensure that no interruption or degradation of the quantity or quality of the spring occurs. In the event that a spring or other water source is affected, Enbridge will provide a suitable alternate water source or negotiate appropriate compensation with the affected landowner. Enbridge has a long term and extensive program in place to confirm the integrity of its existing pipelines. The program will also be expanded to include the proposed Alberta Clipper Expansion. In the unlikely event of a release of hydrocarbons during the operation of the proposed pipelines, Enbridge has in place an Emergency Response Plan to effectively control and clean up released hydrocarbons. Enbridge would provide alternate water supplies in the event that a release of hydrocarbons from Enbridge’s pipeline system contaminated a local aquifer.</p>
<p>Will Enbridge shut down construction operations if the weather doesn’t cooperate and the soil is too wet?</p>	<p>The Environmental and Socio-Economic Assessment for the Project, referred to as the ESA, will provide specific measures addressing construction activities that would be suspended due to wet or thawed soil conditions. Contingency measures are also in place to address localized areas of wet soils. Enbridge will discuss with landowners the process, timeline and procedures that it will follow prior to the commencement of construction. Enbridge will strive to minimize the disruption and damage insofar as it is practicable to do so. Unique or specific requests of landowners will be included on the Construction Line List. Enbridge will compensate landowners for damages directly resulting from its operations.</p>
<p><b>General Project Information</b></p>	
<p>How deep will the pipeline be buried?</p>	<p>In all cases our pipelines meet or exceed government standards for burial depth at the time of construction. However, over time water and wind erosion may reduce the total cover of the lines. In some cases additional cover may be added where facilities have been identified as shallow. For larger areas or where additional fill is not practical, we may consider lowering the pipeline for safety.</p>



What will the pipeline carry?	Alberta Clipper is an oil pipeline that will carry crude oil produced in Alberta to U.S. Midwest and Eastern Canadian markets.
Is the pipeline route finalized?	The preliminary route proposed is generally adjacent to or within Enbridge's current pipeline ROW from Hardisty, Alberta to Superior, Wisconsin and will be part of our application to regulators. The proposed route was chosen in order to minimize disruption to communities and to avoid known environmentally sensitive habitat and wildlife areas as much as possible. The route is, of course, subject to regulatory approval and we welcome your input. Following public consultation and surveys, the final route will be selected and incorporated into our regulatory application.
When will Enbridge be surveying for the Project?	Enbridge plans to complete environmental and land surveys for Alberta Clipper in 2007.
Most of the benefits from the pipeline will go to the U.S.	Alberta Clipper is a direct response to the industry's request to increase pipeline capacity between the Canadian oil sands and key U.S Midwest and Eastern Canadian markets.
<b>Public Safety &amp; Pipeline Maintenance</b>	
How does Enbridge ensure the safety of its pipelines?	Enbridge is an industry leader with nearly 60 years of experience. For new pipelines, safety begins with the planning and design process. Steel pipe and connected facilities are designed and manufactured with a safety factor that meets or exceeds federal and/or provincial regulations and national technical standards. During construction, the pipeline installation is thoroughly inspected. After construction, the pipeline is tested before beginning operations. Regular inspection and maintenance allow our pipelines to operate reliably and safely while minimizing the impact on the environment and ensuring the safety of the public.
Are the existing pipelines, some of which are 50 years old, a greater hazard?	Enbridge manages all of its pipelines to be safe, regardless of age and location. The majority of Enbridge's pipelines were built 30 or more years ago, although portions of the system are relatively new. Integrity management risk control programs were incorporated from the outset in all stages of the pipeline life cycle, from system design to construction and operation.
Are there any safety concerns when pipelines are located near areas where people live or work?	Enbridge is an industry leader with nearly 60 years of experience. We manage our pipelines to be equally safe, regardless of age and location. Design, construction, preventative maintenance, inspection and monitoring procedures are critical to ensuring the ongoing reliability of our pipelines. All of these tools are used to ensure our pipelines continue to operate safely.

<p>In the future will Enbridge change the products in the pipeline?</p>	<p>Enbridge is restricted to transport only products allowed by its registered easement rights and regulatory approvals. Products over and beyond that would require a new agreement or an amendment to the existing agreement.</p>
<p>Will Enbridge contact landowners before doing maintenance or integrity digs on their land?</p>	<p>Enbridge’s significant investment in its Integrity Management Program is evidence of the company’s strong commitment to the environment. We understand landowner’s concerns about maintenance and repair operations and have instituted an integrity dig process whereby Enbridge sends landowners written notification of planned activities and then follows up in person prior to entry on the lands. The objective of this process is to minimize impacts on landowners insofar as it is practicable to do so. Landowners are compensated for any damages arising as a result of these activities but we cannot agree to compensation in advance of any actual losses occurring. In emergency situations we require immediate access to the lands as provided in our easement agreements.</p>
<p>Enbridge integrity digs have been left open and unmarked in the past. This is a safety concern, especially for landowners with young families.</p>	<p>Where an issue or potential issue with Enbridge pipelines is identified, Enbridge may conduct maintenance or repair dig. When conducting these digs every effort is made to reduce the impact to the land and the landowner. However, issues may arise which result in the dig being left open longer than anticipated, these are generally the result of inclement weather. When such instances arise, efforts are made to secure the dig site and mitigate the impacts of these prolonged digs.</p>
<p><b>Right-of-Way &amp; Land Access</b></p>	
<p>Will I be able to cross the ROW with my farm equipment?</p>	<p>Vehicles that are typical to normal farming operations are not restricted from crossing the ROW. These crossings do not require Enbridge’s prior approval. Approval is granted in part through Enbridge’s “Keeping in Touch” landowner publications and the Enbridge easement document.</p>
<p>Can you change the route to avoid yard sites, corral systems and shelterbelts on my land?</p>	<p>Enbridge will work diligently with the landowner to identify feasible options in order to avoid impacting farm structures, active working agricultural facilities and other important features on the land. The Alberta Clipper Expansion Project has been routed to primarily track the existing Enbridge Mainline ROW. These kinds of issues should therefore be minimized.</p>
<p><b>Route South of Regina</b></p>	
<p>The pipeline (Alberta Clipper) should stay further away from major cities. The proposed route south of Regina is too close to the city and land which will be developed in the future. The route should be moved further south.</p>	<p>Enbridge has selected the proposed routing for a number of reasons. One of the reasons is allow us to follow existing pipeline rights-of-way that other companies such as Alliance already have and other utility corridors for most of the length of the proposed route south of Regina.</p>



The present Enbridge right-of-way (through Regina) is very congested and is close to urban housing.	Yes. That's the reason why we are proposing to deviate from the existing Enbridge right-of-way for Alberta Clipper.
When will construction (of the route south of Regina) start?	Construction is dependent on regulatory approval and could start in 2008 with expected completion in 2009. Enbridge will provide more information on the construction schedule as the Project moves ahead, as part of its ongoing public consultation program.

### c) Addressing Stakeholder Issues and Concerns

Enbridge is committed to responding to issues raised by stakeholders or interested parties. Follow-up actions are being, and will continue to be, undertaken at various levels regarding these matters to try and address any outstanding concerns.

Through its public consultation and communications efforts, Enbridge is committed to an ongoing dialogue with the stakeholders and interested parties identified through the regulatory process. This process involves working with participants in an attempt to understand their concerns and address them to the stakeholders' satisfaction. Enbridge's consultation efforts will continue through the regulatory process and, when approval is granted, these activities will be extended through the construction and operations phases.

The following table summarizes the correspondence between Enbridge, stakeholders and the NEB with respect to the Project. For the most part these letters are part of the public record and can be found at the NEB's website at [www.neb.gc.ca](http://www.neb.gc.ca).

**Table 6-10: Project Correspondence**

Date	To/From	Community	Enbridge Response/ Actions Taken
Dec 4, 2006	Outlook Chamber of Commerce to NEB	Outlook, SK	Letter issued to NEB on February 15, 2007, meeting took place in Outlook on March 19, 2007 as described in Section 6.2.6 b.
Dec 5, 2006	Landowner to Enbridge	Morden, MB	Enbridge is preparing a response.
Dec 6, 2006	Landowner to NEB	Macrorie & Outlook, SK	Letter issued to NEB on February 15, 2007, meeting took place in Outlook, SK on March 19, 2007 as described in Section 6.2.6 b, letter issued to Town of Outlook on March 26, 2007.
Dec 7, 2006	Various Souris & Area Landowners to Enbridge	Souris & Area, MB	Meeting took place in Souris, MB on January 24, 2007 (see Appendix 6-11 for presentation).
Dec 8, 2006	Landowner to Enbridge	Virden, MB	Meeting took place in Cromer, MB on January 23, 2007 (see Appendix 6-11 of application for presentation).

Dec 8, 2006	Landowner to Enbridge	Cromer, MB	Meeting took place in Cromer, MB on January 23, 2007 (see Appendix 6-11 of application for presentation).
Dec 11, 2006	Landowner to NEB	Outlook, SK	Letter issued to NEB on February 15, 2007, meeting took place in Outlook on March 19, 2007 as described in Section 6.2.6 b, letter issued to Town of Outlook on March 26, 2007.
Jan 8, 2007	Town of Morden	Morden, MB	Meeting took place with Town of Morden on January 25, 2007.
Jan 11, 2007	RM of Loreburn to Enbridge	Loreburn, SK	Meeting took place with RM of Loreburn on February 27, 2007.
Jan 16, 2007	Minnewasta Golf and Country Club to Enbridge	Morden, MB	Letter of support, no action required.
Jan 23, 2007	Cohen Highley on behalf of Manitoba Pipeline Landowners Association to Enbridge	Various - MB	Reply letter issued on March 23, 2007.
Jan 23, 2007	Cohen Highley on behalf of Manitoba Pipeline Landowners Association to NEB	Various - MB	Reply letter issued on March 23, 2007.
Feb 1, 2007	NEB to Enbridge re landowner complaint	Outlook, SK	Letter issued to NEB on February 15, 2007, meeting took place in Outlook on March 19, 2007 as described in Section 6.2.6 b), letter issued to Town of Outlook on March 26, 2007
Feb 1, 2007	NEB to Enbridge re landowner complaint	Macrorie, SK	Letter issued to NEB on February 15, 2007, meeting took place in Outlook on March 19, 2007 as described in Section 6.2.6 b), letter issued to Town of Outlook on March 26, 2007
Feb 5, 2007	Landowner to NEB re complaint	Outlook, SK	Letter issued to NEB on March 5, 2007.
Feb 10, 2007	Landowner to NEB re complaint	Outlook, SK	Letter issued to NEB on April 2, 2007.
Feb 28, 2007	NEB to Landowner re complaint	Outlook, SK	No action required.
Feb 28, 2007	NEB to Landowner re complaint	Macrorie, SK	No action required.
Feb 28, 2007	NEB to Landowner re complaint	Outlook, SK	No action required.
Mar 1, 2007	NEB to Landowner re complaint	Swan Lake, MB	No action required.
Mar 6, 2007	Knights of Columbus to NEB	Outlook, SK	Meeting took place in Outlook on March 19, 2007 as described in Section 6.2.6 b, letter issued to Town of Outlook on March 26, 2007.
Mar 6, 2007	Landowner to NEB & Minister of the Environment	Outlook, SK	Meeting took place in Outlook on March 19, 2007 as described in Section 6.2.6 b, letter issued to Town of Outlook on March 26, 2007.



Mar 7, 2007	Outlook Scout Group to NEB & Minister of the Environment	Outlook, SK	Meeting took place in Outlook on March 19, 2007 as described in Section 6.2.6 b, letter issued to Town of Outlook on March 26, 2007.
Mar 20, 2007	NEB to Enbridge re landowner complaint	Outlook, SK	Letter issued to NEB on April 2, 2007.
Mar 22, 2007	City of Saskatoon to NEB and Federal Minister of the Environment	Saskatoon, SK	Enbridge is preparing a response.
April 3, 2007	Saskatchewan Environmental Society (SES) to Canadian Environmental Assessment Agency	Outlook, SK Various – SK	Meeting took place in Outlook on March 19, 2007 as described in Section 6.2.6 b, letter issued to Town of Outlook on March 26, 2007.
April 11, 2007	Letter from Cohen Highley on behalf of Manitoba Landowners Association to NEB and Environment Canada	Various - MB	Call from Enbridge to MPLA Director on May 1, 2007 to discuss convening a meeting regarding outstanding issues and concerns of the organization; Enbridge is preparing a response.
April 11, 2007	Town of Outlook, SK to Enbridge	Outlook, SK	Discussions held; Enbridge is preparing a further response.

#### d) Influence of Stakeholder Input on the Project

Interests and concerns identified through the public consultation program have been considered in Enbridge's project planning. Proposed Project design was modified in response to community feedback where possible. Examples of route modifications in response to stakeholder input follow.

EPI's existing ROW in the Morden, Manitoba area runs through the town of Morden, including a portion through the Minnewasta Municipal Golf Course. During the preliminary route selection process it was determined that a deviation south of Morden was necessary to avoid potential impacts to the golf course and the homes nearby. However, at the open house held in Morden, community members advised they had concerns about the proximity of the proposed new route to a municipal water source. Some community leaders and residents were concerned about the potential for contamination in the event of a pipeline rupture. While Enbridge maintains that the proposed deviation route is safe, in this case, through consultation and additional engineering work it was determined that the existing ROW could be used.

EPI is now proposing to route the pipeline on existing ROW through the golf course, thereby avoiding Lake Minnewasta. Golf course representatives have been supportive of the route choice in preliminary discussions with Enbridge to date. Through ongoing consultation, the company will continue to work together with golf course representatives and nearby residents to plan and execute the construction in order to minimize disturbance.

Following consultation and a more detailed review, Enbridge decided to move the proposed pipeline ROW in the Regina, Saskatchewan area. The change was mainly due to concerns that the route originally proposed to run north of Regina

was restricted by existing industrial and commercial development and would also potentially affect land that had been subdivided into acreages or was intended for subdivision. In addition, it was determined that locating the proposed new pump station near Enbridge’s existing pump station north of Regina in order to facilitate a potential future interconnection, was not required to be as close as possible to the existing Regina Pump to facilitate a potential future interconnection.

The change was also, however, due in part to concerns raised by some landowners regarding the proximity of the north route to homes and acreages. It was suggested to Enbridge representatives that a route south of the city could potentially reduce these types of impacts by using existing pipeline and utility corridors. It was also mentioned that Alliance Pipelines had successfully installed their pipeline south of Regina. Upon more detailed engineering and technical evaluation, Enbridge identified a preferred route to the south of Regina that minimizes impacts to the public.

**e) Toll-Free Project Information Line**

The toll-free Project information line telephone number has been provided in Project communication materials to enable callers to leave a voice mail message requesting information, posing questions or providing comments. As the consultation was conducted jointly, one line has been used for both the Alberta Clipper and Southern Lights Projects. Enbridge promptly responds to callers, usually within two business days or sooner. The toll-free message line will continue to be monitored until the Project in-service date. After that time, members of the public can contact Enbridge using the company contact information for regular business operations, as posted on [www.enbridge.com](http://www.enbridge.com).

As of March 1, 2007, over 100 calls have been received on the Project toll-free message line, with most callers either requesting a change to their contact information, asking for more project information (e.g. construction date, project maps and meeting with land agents) or requesting to speak with an Enbridge representative. Enbridge responds to all calls. Statistics for the toll-free line to date are as follows:

**Table 6-11: Toll-Free Message Line Statistics**

Type of call	Total	%
Address / Contact Information Change	61	49.6%
Project Information	17	13.8%
Construction / Right-of-way plans	10	8.1%
Speak with Enbridge	14	11.4%
Map	2	1.6%
Funding (Requesting Enbridge donations)	3	2.4%
Employment and Contracting	13	10.6%
RSVP to Meeting Invitations	3	2.5%
<b>Total</b>	<b>123</b>	<b>100.00%</b>

**f) Land Owner Groups**

Landowners principally within the province of Manitoba and affiliated with the MPLA raised specific concerns they would like Enbridge to address. Their concerns include aspects of pipeline operations, abandonment, integrity, future ROW usage and access, and compensation for pipeline integrity digs and ROW easements. The issues have been raised by either individual Manitoba landowners or groups declaring that they represent Manitoba landowners' interests in the area.

Most of these landowners' issues were raised during the December 2006 open houses held in Manitoba. This included landowners providing Enbridge representatives at the open houses with letters and lists of issues outlining concerns.

In response, Enbridge proposed three workshops in January 2007 to review issues of concern or interest with these Manitoba landowners and, where possible, to seek resolution or understanding. Landowners who were signatories to the list of issues (presented to Enbridge at the Morden, Souris and Cromer open houses) were sent an invitation dated January 11, 2007 (see Appendix 6-11) by Express Post to attend a follow-up workshop with Enbridge representatives. Enbridge representatives also made telephone calls to each landowner to confirm their availability to attend the workshops. The dates, locations and times were as follows:

- Cromer, Manitoba: January 24, 2007 - 10:30 am. to 1:30 pm.
- Souris, Manitoba: January 24, 2007 - 5:30 p.m. to 8:30 p.m.
- Morden, Manitoba: January 25, 2007 - 10:30 a.m. to 1:30 p.m.

The goals and objectives of the workshops were:

- To review issues and concerns communicated to EPI;
- To discuss and clarify landowners' positions or statements;
- To seek common ground or agreement on as many issues as possible; and
- To provide a framework for future discussions with a view to resolving outstanding issues or concerns.

The workshop agenda, Enbridge's presentation and a list of Enbridge attendees are attached, as Appendix 6-12. At the workshops, and through written correspondence, landowners have indicated their preference to work through the MPLA rather than as individuals for most of their future dealings with Enbridge. Individuals that attended also provided process input on how they would like to be consulted and communicated with going forward.



Enbridge is aware that a landowners group, similar to that in Manitoba, has been created in Saskatchewan. As indicated in Section 6.2.6, letters of concern have been sent either directly to the NEB or to Enbridge from landowners residing in Saskatchewan.

### **6.2.7 Interpretation of Consultation Program Outcomes**

To date, the consultation program has accomplished the primary objectives established by Enbridge. Contact and dialogue continues with several stakeholders as well as First Nation and Métis communities. To this point, stakeholder issues or concerns raised have either been addressed or continue to be discussed with a view to addressing them in the near future.

### **6.2.8 Next Steps**

Enbridge will continue to engage stakeholders through approval and construction and up to the in-service date of the new and modified Project facilities. Future consultation activities are anticipated to include:

- Additional mail outs and / or faxes of Project update information, possibly including maps and new Project information newsletters;
- Personal contacts by telephone and meetings with government representatives and ministries;
- Meetings with landowners either individually or in groups to discuss ROW easements, surface land issues, pipeline integrity and safety, and construction schedule, etc.; and
- Additional community information sessions or open houses, if determined to be necessary, or if desired by a large enough group of stakeholders or a key community or communities.

During the operating phase, stakeholder communications respecting the Project facilities will be integrated into the scope of the existing Public Awareness Program conducted by Enbridge along its ROW.

## **6.3 Aboriginal Engagement**

Enbridge has instituted a company-wide Indigenous People's Policy (see Appendix 6-2). The policy establishes key principles for relations with First Nations and Métis people. These principles include respect for traditional ways and land, heritage sites, the environment and traditional knowledge. The policy is designed to ensure a consistent and thorough approach to consultation with Aboriginal communities and guides the activities which form the core of the Project's Aboriginal engagement and consultation program. The key activities involved in the program include; developing relationships, exchanging information regarding the Project, listening to Aboriginal concerns and addressing such concerns to the extent possible, as well as ensuring on-going dialogue

about the Project's potential impacts and benefits. Provincial and Federal consultation policies and requirements also guide Enbridge's Aboriginal consultation and engagement program.

### **6.3.1 Principles and Goals of the Aboriginal Engagement Program**

Specific principles and goals of the Project's Aboriginal engagement program are to:

- Implement engagement with Aboriginal groups early in the process and continue engagement through the regulatory process, as well as through the construction and operations phases;
- Develop consultation protocol principles for the consultation process with potentially affected First Nations and Métis communities in Alberta, Saskatchewan and Manitoba;
- Provide Aboriginal groups and interested Aboriginal organizations with Project information in a timely, ongoing and sensitive manner so they can consider such information in determining their interests in respect of the Project;
- Provide opportunities to Aboriginal groups and organizations to identify issues and potential Project effects;
- Respond to all issues and concerns raised by Aboriginal groups and organizations;
- Indicate how the concerns of Aboriginal groups and organizations have been considered and taken into account in the design and planning of the Project;
- Increase knowledge of the potential environmental effects of the Project on Aboriginal interests;
- Avoid, reduce or mitigate, to the extent possible, the effects of the Project;
- Disseminate the results of the environmental assessment process;
- Provide opportunities for discussion and seek joint issue resolution, where possible; and
- Identify and explore opportunities for participation by Aboriginal people in the Project by way of education, employment and business opportunities.

### **6.3.2 Identifying Aboriginal Groups**

The Alberta Clipper Project will cross the provincial boundaries of Alberta, Saskatchewan and Manitoba and will traverse areas covered by Treaty No. 1,

Treaty No. 2, Treaty No. 4 and Treaty No. 6. Enbridge determined that Aboriginal communities within an 80 kilometre radius from the EPI ROW could potentially be impacted by the Project. As such, Enbridge contacted all Aboriginal groups within this 80 km zone. Enbridge also works with other Aboriginal groups who identify an interest in the Project but lie outside of the 80 km zone.

The Swan Lake First Nation, in Manitoba will be directly affected by the Project as EPI's ROW crosses the northeastern tip of the Swan Lake Indian Reserve No. 7. In addition, it is anticipated that the Keeseekoose First Nation in Saskatchewan has Treaty Land Entitlement lands that will be crossed by the re-route to the south of Regina.

**a) Alberta:**

In central Alberta, 10 First Nations outside of the 80 km engagement zone have expressed an interest in the Project. In certain cases these groups became aware of the Project as a result of Enbridge's ongoing communication with respect to other Enbridge projects taking place in their respective areas.

- Samson Cree Nation
- Montana Band
- Ermineskin Tribe
- Louis Bull Band
- Cold Lake First Nation
- Frog Lake First Nation
- Kehewin Cree Nation
- Onion Lake First Nation
- Saddle Lake First Nation
- Whitefish Lake #128 Band (Goodfish)

In addition, the Métis Nation of Alberta Region 2 and Region 3<sup>1</sup> are the political representative organizations for the Métis people of Alberta within the engagement zone.

**b) Saskatchewan:**

Twenty-one First Nations in central and southern Saskatchewan have been identified as being within the 80 kilometre engagement zone:

---

<sup>1</sup> The Métis Nation of Alberta Region 3 were not advised of the January 8-9, 2007 open houses. Project information has since been provided and Enbridge has engaged the organization in the Alberta Clipper Aboriginal engagement Program.

- Carry The Kettle First Nation
- Cowessess First Nation
- Kahkewistahaw First Nation
- Keeseekoose First Nation
- Little Black Bear Band
- Muscowpetung First Nation
- Ocean Man First Nation
- Ochapowace First Nation
- Okanese First Nation
- Pasqua First Nation #79
- Peepeekisis First Nation
- Piapot First Nation
- Pheasant Rump Nakota First Nation
- Poundmaker First Nation
- Red Pheasant First Nation<sup>2</sup>
- Star Blanket First Nation
- Sakimay First Nation
- Standing Buffalo Dakota First Nation<sup>2</sup>
- Sweetgrass First Nation
- White Bear First Nation
- Whitecap First Nation

These First Nations are part of the Battlefords Tribal Council, File Hills Qu'Appelle Tribal Council, Yorkton Tribal Council, Southeast Treaty No. 4 Tribal Council, and the Saskatoon Tribal Council and are part of Treaty Nos. 2, 4 or 6.

---

<sup>2</sup> The Standing Buffalo Dakota First Nation and Red Pheasant First Nation were not advised of the December 1, 2006 open house. Project information has since been provided and Enbridge has engaged the organization in the Alberta Clipper Aboriginal engagement program.

The Federation of Saskatchewan Indian Nations (FSIN) was engaged as the representative organization serving the political interests of Saskatchewan First Nations. The FSIN was also identified as a group that could, in accordance with its Consultation Policy, provide support to Saskatchewan First Nations throughout the consultation process.

The Métis Nation - Saskatchewan Western Region IA, Western Region IIA, Western Region III and Eastern Region III has also been identified for engagement purposes.

**c) Manitoba**

Eight First Nations in central in Manitoba have been identified as being within the 80 kilometre engagement zone:

- Sioux Valley Dakota Nation
- Canupawakpa Dakota Nation
- Birdtail Sioux Dakota Nation
- Long Plain First Nation
- Dakota Tipi First Nation
- Dakota Plains First Nation
- Roseau River Anishinabe First Nation
- Swan Lake First Nation

EPI's ROW will traverse the northeastern tip of Swan Lake Indian Reserve No. 7 for approximately one kilometre. As such, the Swan Lake First Nation will be directly affected by the Project. Enbridge has met and will continue to meet with the Swan Lake First Nation in order to address any concerns that Swan Lake First Nation may have.

The Dakota Ojibway Tribal Council (DOTC) is a Tribal Council comprised of the Sioux Valley Dakota Nation, Canupawakpa Dakota Nation, Birdtail Sioux Dakota Nation, Long Plain First Nation, Dakota Plains First Nation, Swan Lake First Nation and the Roseau River Anishinabe First Nation. The DOTC was identified for engagement purposes as an organization which could provide support through the consultation process to its respective members.

The Manitoba Métis Federation (MMF) is the political representative organization for the Métis people of Manitoba and the MMF has been engaged on this basis.

### **6.3.2.1 Design of the Aboriginal Engagement Program**

The Aboriginal engagement program responds to the issues and concerns of First Nations and Métis, and assists the Project in complying with the requirements of the NEB and various Governmental policies respecting consultation. Enbridge recognizes that First Nations and Métis communities may have specific financial and capacity requirements in responding to the information provided to them about the Project. Where there may be a potential effect on a First Nation or Métis group, the Project will offer reasonable funding to assist the community in assessing such potential effects and to develop a response.

Enbridge seeks to foster successful working relationships with First Nations and Métis communities. For that purpose, Enbridge may discuss arrangements for job training, employment and contracting opportunities, so Aboriginal people may participate and benefit in the Project.

Engagement and consultation with Aboriginal groups varies with the circumstances and the potential effects a project may have on Aboriginal interests. The Project is expected to have minimal impact on Aboriginal communities as the Alberta Clipper pipeline will run primarily along existing Enbridge ROW. In total, approximately 98.7 kilometres of new ROW will be required in areas near Regina, Mildred and Kipling, Saskatchewan and near Wawanessa (Souris River valley), Manitoba where the proposed route will deviate from Enbridge's existing ROW. All but 22.5 kilometres follow an existing linear disturbance and the majority of the land traversed are currently used for agricultural or livestock grazing purposes.

Engagement for purposes of the Project includes but is not limited to the following:

- Identification of Traditional Land Uses within the Project area;
- Recording engagement and information sessions/meetings and provide a detailed description of the consultation discussions;
- Contacting the Provinces of Manitoba, Saskatchewan and Alberta and the federal Department of Indian and Northern Affairs to inform them of the engagement plan and understand their expectations;
- Coordinating the engagement process to address potential impacts on Traditional Land Uses;
- Ensuring that engagement is objective and includes the economic and social impacts of First Nation communities and Métis groups/organizations;
- Considering governmental requirements in respect of consultation policies and associated guidelines;

- Establishing processes, including appropriate timelines for notification and access to information, available to the First Nation and Métis communities in a timely fashion; and
- Sharing information regarding the Project, understanding questions, issues and concerns respecting the Project, and responding appropriately.

**a) First Round of Engagement**

The first round of engagement activities took place in mid-October 2006. The initial engagement process for the Project included:

- Introducing Enbridge and the Project to Aboriginal communities and organizations and any third party organizations which may be assisting in the consultation process, such as the FSIN;
- Introducing Project information including a general project overview, anticipated project timelines, maps and information on pipeline operations;
- Providing all identified Aboriginal communities and organizations with the Alberta Clipper Project information newsletter and notification of public open house sessions in Alberta, Saskatchewan and Manitoba by mail;
- Providing NEB Guidelines on how groups can participate in the process when sharing Project information;
- Ascertaining and respecting consultation protocols, wherever reasonably possible, for each Aboriginal community and organization when consultations are occurring;
- Gathering statistical and demographic information, business listings, measuring capacity to participate, and obtaining traditional mapping if available;
- Conducting early scoping of issues regarding the Project after allowing time for review of information; and
- Based on information provided to potentially affected communities, inquiring as to any potential adverse affects to Treaty or Aboriginal rights.

**b) Second Round of Engagement**

Enbridge initiated a second round of engagement in early November 2006 and is continuing to work with all identified Aboriginal communities and organizations. This includes:

- Discussions with potentially affected Aboriginal communities and organizations regarding a formalized process for consultation which may include capacity funding in order to participate in the consultation process;
- Continuing to gather statistical and demographic information, business listings, capacity to participate, and obtaining traditional mapping where available;
- Setting out intentions for the progression of a long-term relationship-building between Enbridge and affected Aboriginal communities and organizations;
- Continuing to obtain, record and report to Enbridge any issues or concerns relayed from affected Aboriginal communities and organizations regarding the Project and responding to Aboriginal communities and organizations in a timely manner;
- Continuing to prepare and inform affected Aboriginal communities and organizations, through both direct meetings and mail outs, of potential contracting and employment opportunities; and
- Informing communities of filing of regulatory applications including informing and educating on the regulatory process and indicating time lines.

**c) Third Round of Engagement**

Enbridge will initiate a third round of engagement after the filing of this Application. The process includes:

- Acting as a bridge to facilitate relationships between affected Aboriginal communities and organizations, Project personnel and construction contractors; and
- Development and execution of formalized processes for consultation.

**6.3.3 Implementing the Engagement Program**

The Aboriginal engagement program has involved a number of activities including: distribution of the Preliminary Information Package; mail outs of letters of notification and project newsletters; open house advertising; meetings and presentations; community visits and information drop-offs; and the development of an issue database. Table 6-12 below summarizes the activities that have taken place to date:



**Table 6-12: Alberta Clipper Aboriginal Engagement Summary**

<b>Aboriginal Stakeholder</b>	<b>Date</b>	<b>Event</b>	<b>Information and Materials Provided</b>	<b>Comment</b>	<b>Next Step</b>
Federation of Saskatchewan Indian Nations	September 25, 2006	Meeting	Verbal introduction of the Project	Discussion on formalizing an agreement to guide consultation	Continue discussions regarding formalized agreement
Manitoba Métis Federation	October 11, 2006	Meeting	Verbal introduction of the Project	Discussed protocol for consultation process and potential for Protocol Agreement	Continue discussions regarding formalized agreement
Dakota Nations of Manitoba	October 12, 2006	Meeting	Verbal introduction of the Project	Discussed potential meeting with Enbridge Senior Management and the 5 Dakota Nations of Manitoba	Arrange meeting in Edmonton for Oct. 25/06
Dakota Ojibway Tribal Council	October 25, 2006	Meeting	Verbal information on traditional land mapping; verbal overview of the Project; Enbridge control room presentation and viewing  Member Nation Roseau River Anishnabe First Nation provided documentation pertaining to the Band's outstanding land claim	Discussions between Dakota Ojibway Tribal Council and Enbridge Senior Management	Project information materials to be forwarded
Dakota Ojibway Tribal Council	November 10, 2006	Meeting	Verbal overview of Project	Discussed letter of support from Enbridge regarding land settlement with Canada	Prepare draft letter and protocol agreement for discussion



Section 6 – Public Consultation and Aboriginal Engagement

Aboriginal Stakeholder	Date	Event	Information and Materials Provided	Comment	Next Step
Swan Lake First Nation	November 20, 2006	Meeting	Verbal overview of Project	Community requested an open house with Project information and Project personnel	Open house scheduled for February 07
Dakota Tipi First Nation	November 20, 2006	Meeting	Verbal overview of Project	Discussed community's infrastructure and economic plans	Continue with Project information updates
Dakota Ojibway Tribal Council	December 18, 2006	Meeting	Letter dated December 15, 2006 from Dakota Nations of Manitoba to Enbridge Pipelines Inc.	Dakota Ojibway Tribal Council advised that previously agreed upon approach to consultation may be reconsidered by the Council of Chiefs	Continue discussions regarding formalized agreement
All Aboriginal groups identified through the consultation program (see Table 6.1)	December 20, 2006	Mail-out	Alberta Clipper Project Preliminary Information Package	Sent PIP to each Aboriginal group identified through the consultation program	Continue to provide Project information
Roseau River Anishinabe First Nation	January 12, 2007	Pre Community Meeting	None	Briefing with Chief Nelson to review agenda and expectations for community presentation	Prepare for next meeting
Roseau River Anishinabe First Nation	January 12, 2007	Community Meeting	2006 Enbridge <i>Corporate Social Responsibility Report</i> . Open house information package	Gave formal presentation on the Project to community members and community leadership.	Continue to ensure community remains informed

Aboriginal Stakeholder	Date	Event	Information and Materials Provided	Comment	Next Step
Dakota Ojibway Tribal Council	January 12, 2007	Meeting	Letter of invitation from Chief Whitecloud for Enbridge to present to the Sioux Valley community in early February	Invitations provided to Enbridge to deliver Project presentations in the Dakota communities of Sioux Valley and Birdtail	Prepare for community meetings with Sioux Valley (March 29) and Birdtail (January 24)
Ermineskin Cree Nation and Louis Bull Tribe First Nation	January 17, 2007	Meeting	Open house information package	The bands expressed interest in working collaboratively with Enbridge and would like to enter into a formalized relationship	Continue to update community
Battlefords Tribal Council (BTC)	January 18, 2007	Meeting	Preliminary route map from open house information package and Preliminary Information Package	BTC Chiefs would like to enter into a protocol agreement with Enbridge to address their interests and priorities in the Project	Reconvene week of January 29, 2007 to discuss proposed agreement
Poundmaker First Nation	January 23, 2007	Meeting	Proposed corridor map, open house information package and contact information	Thorough review of preliminary route mapping. Chief and Council expressed interest in working closely with Enbridge to prepare community members for employment opportunities.	Follow up meeting once Project opportunities are more clearly identified
Whitecap First Nation	January 23, 2007	Information Drop off	Open house information package and contact information		Continue to provide Project information
Federation of Saskatchewan Indian Nations	January 23, 2007	Meeting	Preliminary route mapping, open house information package, and contact information. FSIN provided a copy of their	Provided an overview of the Project. FSIN expressed interest in lending a supportive role to consultation efforts and would like to formalize a	Follow up meeting in February 07 to discuss MOU

Section 6 – Public Consultation and Aboriginal Engagement

Aboriginal Stakeholder	Date	Event	Information and Materials Provided	Comment	Next Step
			consultation policy as well as a response to the proposed MOU.	relationship with Enbridge as soon as possible.	
Little Black Bear's Band	January 24, 2007	Information Drop off	Open house information package, contact information, Preliminary Information Package	Community leadership were unavailable to meet	Continue to provide Project information
Star Blanket First Nation	January 24, 2007	Community visit	None	All offices were shut down on this day for a funeral	Continue to provide Project information
Okanese First Nation	January 24, 2007	Meeting	Open house package, contact information, verbal overview of Project	Reviewed Project and route mapping. Chief and Council expressed an interest in learning more about the employment and business opportunities that may be associated with the Project.	Follow up meeting once Project opportunities are more clearly identified
Peepeekisis First Nation	January 24, 2007	Information Drop off	Open house information package, contact information	Community leadership were unavailable to meet	Continue to provide Project information
Métis Nation Saskatchewan, Southeast Region 3	January 24, 2007	Meeting	Preliminary route maps, open house information package, contact information	Reviewed Project and route mapping. Métis office provided updated information on their administration and leadership. Métis expressed interest in having their members observe an Alberta Clipper presentation.	Prepare for Alberta Clipper Project presentation in February 2007

<b>Aboriginal Stakeholder</b>	<b>Date</b>	<b>Event</b>	<b>Information and Materials Provided</b>	<b>Comment</b>	<b>Next Step</b>
Birdtail Sioux Dakota Nation	January 24, 2007	Community meeting	Open house information packages	Enbridge Pipelines representatives conducted formal Alberta Clipper presentation to community members.	Continue to provide Project information.
Canupawakpa Dakota Nation	January 24, 2007	Community meeting	Open house information packages	Enbridge Pipelines representatives conducted a formal Alberta Clipper presentation to community members.	Continue to provide Project information
Dakota Plains First Nation	January 25, 2007	Meeting	Open house information packages	Provided information on the Project and EPI general information.	Continue to provide Project information.
White Bear First Nation	January 25, 2007	Meeting	Open house information package, contact information	Confirmed date for formal Alberta Clipper meeting and Project presentation to Chief and Council.	Alberta Clipper Project presentation and meeting with Chief and Council on March 7, 2007
Pheasant Rump Nakota First Nation	January 25, 2007	Information drop off	Open house information package, contact information	Leadership were unavailable to meet	Continue to provide Project information
Ocean Man First Nation	January 25, 2007	Meeting	Preliminary route mapping, open house information package, contact information	Provided a brief overview of the Project. Invitation extended to Enbridge to participate in community career fair in March 2007.	Enbridge to participate in community career fair in March 2007
Ochapowace First Nation	January 25, 2007	Information drop off	Open house information package, contact information	Leadership were unavailable to meet	Continue to provide Project information
Kahkewistahaw First Nation	January 25, 2007	Information drop off	Open house information package, contact information	Leadership were unavailable to meet	Continue to provide Project information

Section 6 – Public Consultation and Aboriginal Engagement

Aboriginal Stakeholder	Date	Event	Information and Materials Provided	Comment	Next Step
Carry the Kettle First Nation	January 25, 2007	Information drop off	Open house information package, contact information	Leadership were unavailable to meet	Continue to provide Project information
Cowessess First Nation	January 25, 2007	Meeting	Preliminary route mapping, provided open house packages, contact information. Map of TLE and reserve lands around Regina provided by Cowessess.	Reviewed route mapping. Cowessess owns four land parcels around Regina, two have reserve status and two are TLE lands to receive reserve status within the coming months.	Follow-up meeting in early February
Sakimay First Nation	January 25, 2007	Meeting	Preliminary route mapping, open house package, contact information	Reviewed route mapping. Sakimay owns two TLE land parcels near Regina.	Follow-up meeting on Feb 1, 2007
Pasqua First Nation #79	January 26, 2007	Information drop off	Open house information package, contact information		Continue to provide Project information
Muscowpetung First Nation	January 26, 2007	Meeting	Open house information package, contact information	Provided an overview of the Project. Chief to review Project materials on Monday.	Continue to provide Project information
Piapot First Nation	January 26, 2007	Information drop off	Open house information package, contact information		Continue to provide Project information
Cowessess First Nation	January 29, 2007	Meeting	Preliminary Information Package	Overview of Alberta Clipper consultation program and regulatory timeframes. Cowessess and Sakimay are working together to partner with the BTC with regards to business training opportunities.	Follow-up meeting in February

Aboriginal Stakeholder	Date	Event	Information and Materials Provided	Comment	Next Step
Montana First Nation	January 31, 2007	Information drop-off	Open house information package, contact information	Information package provided to the Public Works/Utility Manager on behalf of the Chief	Continue to provide Project information
Métis Nation of Alberta Region 2	February 1, 2007	Meeting	Cover letter dated January 22, 2007 RE: Enbridge Expansions Project Newsletter Vol. 2 January 2007, Open house information package	Overview of the Project provided. Métis Nation of Alberta region 2 indicated that there would be an interest in creating economic and employment opportunities for membership and their businesses.	Continue to provide Project information and updates to the Métis Nation of Alberta Region 2
Manitoba Métis Federation	February 7, 2007	Meeting	Open house information package	Manitoba Métis Federation provided specific environmental questions to Enbridge representatives regarding the proposed Project.	Enbridge Pipelines currently coordinating formal response to questions raised by the Manitoba Métis Federation
Swan Lake First Nation	February 7, 2007	Open house	Open house information package, Enbridge Pipelines Corporate Social Responsibility, Alberta Clipper proposed route mapping. Enbridge Expansions Project Newsletter Vol. 1 2006 and Vol. 2 January 2007	Swan Lake First Nation leadership and community members attended an open house regarding the Project. Leadership expressed concerns pertaining to pipeline integrity and the potential for contamination of an aquifer adjacent to the community.	Enbridge Pipelines is currently preparing a formal response to the concerns raised

Section 6 – Public Consultation and Aboriginal Engagement

Aboriginal Stakeholder	Date	Event	Information and Materials Provided	Comment	Next Step
Métis Nation of Alberta Region 3	February 15, 2007	Meeting	Preliminary Information Package, Open house information package, all Project information letters previously distributed	Overview of the Project provided. Métis Nation of Alberta Region 3 expressed an interest in economic and employment and employment opportunities. Further noted that the Region office does not have technical capacity to devote to regulatory applications.	Continue to provide Project information and updates to the Métis Nation of Alberta Region 3. Métis Nation of Alberta Region 3 will be providing business listings to Enbridge.
Federation of Saskatchewan Indian Nations	February 15, 2007	Meeting	None	Project update, discussion on how to effectively advance negotiations around protocol agreement	Joint meeting with Chiefs of potentially affected communities to obtain feedback on appropriate role of FSIN in consultation process
Ochapowace First Nation	February 20, 2007	Meeting with Chief and Council	None	Provided Project update and reviewed preliminary route mapping	Reconvene at appropriate time to discuss employment and business opportunities
Pheasant Rump First Nation	February 21, 2007	Meeting with Chief and Council	None	Provided Project update and reviewed preliminary route mapping	Reconvene at appropriate time to discuss employment and business opportunities
White Bear First Nation	February 21, 2007	Meeting with Band Manager	Open house information package	Provided Project overview, reviewed preliminary route mapping	Formal Project presentation to be made to Chief and Council on March 7, 2007
Long Plain First Nation	February 26, 2007	Meeting with Chief and Council	None	Provided a Project overview	Reconvene at an appropriate time to discuss Project opportunities



Aboriginal Stakeholder	Date	Event	Information and Materials Provided	Comment	Next Step
Samson Cree Nation	February 27, 2007	Meeting	Contact Information and Mapping of Alberta Clipper Project ROW.	Enbridge meeting with Samson Cree Nation in the community for purposes of providing Alberta Clipper Project information. Community expressed interest; Environmental Assessment review for the Alberta Clipper Project, Employment Training for the Samson Cree Nation members - Possible Open House and TUS Study for the community	Continue to provide Alberta Clipper Project information updates. Continue to address issues and concerns along with meeting requests.
Red Pheasant First Nation	March 5, 2007	Meeting	Reviewed Project route mapping, Chief provided sponsorship package for Saskatchewan Indian Summer Games	Enbridge meeting with Chief on March 5, 2007 Provided an Alberta Clipper Project overview	Project presentation to be made to Chief and Council at a date and time to be determined
Saskatchewan Indian Institute of Technologies	March 5, 2007	Meeting with President and Senior Management	None	Provided an Alberta Clipper Project overview and discussed potential training needs	Reconvene at an appropriate time to discuss Project training needs
White Bear First Nation	March 7, 2007	Meeting with Chief and Council	None	Provided a Project overview	Reconvene at an appropriate time to discuss Project opportunities
Carry the Kettle First Nation	March 7, 2007	Meeting with Band Manager	Contact Information	Introductory meeting to provide an overview of the Alberta Clipper Projects as well as to request a formal audience with Chief and Council at a later date	To follow-up with Wayne to obtain possible meeting dates with Chief and Council

Section 6 – Public Consultation and Aboriginal Engagement

Aboriginal Stakeholder	Date	Event	Information and Materials Provided	Comment	Next Step
Standing Buffalo First Nation	March 7, 2007	Meeting with Chief Operating Office	Contact Information	Introductory meeting to provide an overview of the Alberta Clipper Projects as well as to request a formal audience with Chief and Council at a later date, also confirmed receipt of the ACCE Project application	To follow-up with Betty to obtain possible meeting dates with Chief and Council
Piapot First Nation	March 8, 2007	Meeting with Band Manager and Environmental Protection Manager	Open house information package	Provided a Project overview and requested a meeting with Chief and Council	Formal Project presentation to be made to Chief and Council on April 26, 2007
Muscowpetung First Nation	March 8, 2007	Drop in to schedule formal meeting	Contact Information	Provided a brief overview of Enbridge and the mainline expansion projects	To contact Marcella to discuss potential meeting dates
Pasqua First Nation	March 8, 2007	Drop in to schedule formal meeting	Contact information		To contact Gary Courchene to discuss potential meeting dates
Samson Cree Nation	March 14, 2007	Meeting	Open house information package	Southern Lights project information was provided to representatives of Samson Cree Nation. Upon the completion of the meeting a tour and presentation of the Enbridge control room took place.	Arrange follow-up meeting to further discuss economic and employment opportunities associated with the Southern Lights Project
Federation of Saskatchewan Indian Nations	March 15, 2007	Meeting with the Executive	None	Provided a Project update and discussed how to effectively proceed towards concluding an agreement	Conclude a relationship protocol agreement

Aboriginal Stakeholder	Date	Event	Information and Materials Provided	Comment	Next Step
Battlefords Tribal Council	March 16, 2007	Meeting with Senior Management	None	Battlefords Tribal Council expressed an interest in concluding a training framework agreement	Reconvene once an agreement has been drafted
Dakota Nations of Manitoba	March 20, 2007	Meeting	Dakota Nations of Manitoba draft letter to Enbridge Pipelines regarding Memorandum of Understanding Discussions	Meeting held March 20, 2007 with Chiefs and representatives of the Dakota Nations of Manitoba to continue discussions towards the eventual execution of a Memorandum of Understanding between Enbridge and the Dakota Nations of Manitoba	Dakota Nations of Manitoba request to meet with Enbridge again to work towards the execution of a Memorandum of Understanding between the parties
Standing Buffalo Dakota First Nation	March 20, 2007	Phone Call	None	Left message requesting a return phone call from the Chief Operating Officer for the purposes of scheduling a meeting with Chief Redman	Await for a return phone call, if no call is received then follow-up again
Standing Buffalo Dakota First Nation	March 21, 2007	Phone Call	None	Phone call to Chief Operating Officer in attempt to schedule meeting with Chief Redman	COO to contact Chief Redman to confirm availability for a meeting
Standing Buffalo Dakota First Nation	March 22, 2007	Phone Call	Receptionist provided Chief Redman's cell phone number	Phone call to obtain contact information for Chief	Phone Chief Redman directly on his cell phone
Standing Buffalo Dakota First Nation	March 22, 2007	Phone Call	None	Chief Redman tentatively agreed to a meeting on March 27th	Phone Chief Redman on March 26th to confirm the meeting

Section 6 – Public Consultation and Aboriginal Engagement

Aboriginal Stakeholder	Date	Event	Information and Materials Provided	Comment	Next Step
Standing Buffalo Dakota First Nation	March 26, 2007	Phone Call	None	Chief Redman indicated that he was unavailable to meet on March 27th and directed all further contact to occur with Merv Phillips, legal counsel for SBDFN	Arrange for Enbridge legal department and Mr. Phillips to arrange a meeting
Ocean Man First Nation	March 27, 2007	Participation in community career fair and meeting with the Chief	Project information materials	Provided a brief presentation on Enbridge and pipeline related employment opportunities to the youth, provided a Project overview to the Chief	Provide a formal Project presentation to Chief and Council
Pheasant Rump First Nation	March 27, 2007	Meeting with Chief and Council	Information pertaining to community sponsorship requests	Discussed Enbridge's community investment program	Reconvene at an appropriate time to discuss Project opportunities
Carry the Kettle First Nation	March 28, 2007	Meeting with Chief and Council	None	Provided a Project overview and discussed potential interests	Reconvene at an appropriate time to discuss Project opportunities
Standing Buffalo Dakota First Nation	April 13, 2007	Meeting with Chief and Council	None	Discussed Standing Buffalo Dakota First Nation's interests and concerns regarding the Project	Reconvene in Edmonton for a facilities and operations tour on April 25th
Métis Nation of Alberta Region 3	April 16, 2007	Meeting	Copy of Clipper/corridor map for review	Follow up meeting for purposes of providing a Clipper/SL map for review. MNA Region requests; contribution for TLU Study, open house and contribution for Métis Awards event	Enbridge provided community contribution to Métis Awards. Continue to provide response to requests

Aboriginal Stakeholder	Date	Event	Information and Materials Provided	Comment	Next Step
Standing Buffalo Dakota First Nation	April 17, 2007	Phone Call	None	Discussion to further plans to meet in Edmonton on April 24	Continue to plan and arrange for meeting
Dakota Nations of Manitoba	April 17, 2007	Meeting	Open house information package, Meeting Agenda dated April 17, 2007, Draft copy of Memorandum of Understanding between the Dakota Nations of Manitoba and Enbridge	As requested by the Dakota Nations of Manitoba at a meeting held March 20, 2007 a second meeting was held April 17, 2007 in Edmonton, Alberta with Chiefs and representatives of the Dakota Nations of Manitoba to continue discussions towards the execution of a Memorandum of Understanding between the parties	Reconvene in a timely manner to work towards execution of a Memorandum of Understanding between the parties
Standing Buffalo Dakota First Nation	April 18, 2007	Phone Call	None	Chief phoned to inquire about the status of the draft letter of support and draft MOU as discussed at the April 13th meeting	Provide draft letter of support and MOU
Battlefords Tribal Council	April 18, 2007	Meeting	None	Enbridge meeting with BTC took place on April 18, 2007. Discussed BTC interests in delivering a training program at Jack Fish Lodge	Reconvene at an appropriate time to discuss training opportunities



Aboriginal Stakeholder	Date	Event	Information and Materials Provided	Comment	Next Step
Louis Bull Tribe First Nation	April 19, 2007	Phone Call	None	Enbridge Contacted Louis Bull Tribe First Nation attempting to arrange a meeting with the Chief. It was indicated by the Chief's Assistant that meeting requests must be submitted in writing	Request a meeting with the Chief by way of letter
Standing Buffalo Dakota First Nation	April 19, 2007	Fax	Draft letter of Support and Draft MOU for SBDFN	Documents faxed for SBDFN review and consideration	Await response to documents
Saskatchewan Indian Institute of Technologies	April 19, 2007	Meeting with President and Senior Management	None	Discussed SIIT interests in supporting training needs for the Project	Reconvene at an appropriate time to discuss how SIIT may support Project training needs
Whitecap Dakota Nation	April 20, 2007	Meeting with Lands Manager	Open House information package	Provided Project overview and discussed related White Cap Dakota Nation interests and concerns	Reconvene to provide a formal presentation to Chief and Council on a date to be determined
Federation of Saskatchewan Indian Nations	April 20, 2007	Meeting with Executive Assistant	Project corridor community contact listing	Reviewed Project community contact listing to support FSIN involvement in the organizing of a joint meeting of Chiefs representing Project corridor communities	Co-host meeting with leadership from Project corridor communities on May 7th
Standing Buffalo Dakota First Nation	April 23, 2007	Phone Call	None	Phone call to Chief to inquire about meeting on April 24th in Edmonton	Meeting cancelled - continue attempts to meet

Aboriginal Stakeholder	Date	Event	Information and Materials Provided	Comment	Next Step
Louis Bull Tribe First Nation	April 24, 2007	Letter	Enbridge letter sent to Chief on April 24	Letter requesting a meeting for purposes of providing Enbridge Project information. Letter was sent at the request of contact person	Continue to provide Project information
FSIN, Cowessess First Nation, Nekaneet First Nation, Muscowpetung First Nation, Ochapawace First Nation, Pasqua First Nation, Piapot First Nation, Sakimay First Nation, Standing Buffalo Dakota First nation, Star Blanket First Nation, Carry The Kettle First Nation, Métis Nation Saskatchewan Southeast Region 3, Regina Local, Indian and Northern Affairs Canada- Saskatchewan Region	April 25, 2007	Fax and mail	Letter dated April 25, 2007 Map of proposed re-route south of Regina	Letter dated April 25, 2007 providing information on an open house being held in Grand Coulee, SK pertaining to the Alberta Clipper proposed re-route south of Regina. A map of the proposed re-route was also provided with the information	Follow up phone calls to communities to ensure receipt of letter and map
Standing Buffalo Dakota First Nation	April 25, 2007	Phone Call	None	Phone call to Chief Redman to inquire about meeting in Regina on April 25 or 26	Await response to meeting request, if no meeting occurs inquire about alternate dates
Standing Buffalo Dakota First Nation	April 26, 2007	Letter	Letter from Chief dated April 26		Draft response letter and continue with attempts to confirm a meeting with SBDFN

Section 6 – Public Consultation and Aboriginal Engagement

Aboriginal Stakeholder	Date	Event	Information and Materials Provided	Comment	Next Step
Swan Lake First Nation	April 26, 2007	Meeting with Chief, Council and Indian and Northern Affairs Canada representative	Open house information packages, Alberta Clipper power point presentation	Continued dialogue for purposes of developing a ROW agreement, addressing community issues, concerns and requests.	Follow-up meetings to address community issues, concerns and requests.
Muscowpetung Saulteaux Nation	April 26, 2007	Meeting with Chief and Council	Alberta Clipper re-route notification letter and map, preliminary route mapping for review	Provided overview of Alberta Clipper Project and consultation program	Follow-up to provide information on potential training, employment and business opportunities
Little Black Bear's Band	April 26, 2007	Meeting with Chief	Alberta Clipper re-route notification letter and map, preliminary route mapping for review	Provided overview of Alberta Clipper Project and consultation program	Continue to provide Project information and to provide potential economic and employment opportunities stemming from the Project at the next meeting.
Kahkewistahaw First Nation	April 27, 2007	Meeting with Chief of Kahkewistahaw and FSIN Vice Chief	Alberta Clipper preliminary route mapping for review	Provided overview of Alberta Clipper Project and consultation program	
Federation of Saskatchewan Indian Nations	April 27, 2007	Meeting with Vice Chief FSIN	None	Development of meeting agenda and objectives for meeting with Chiefs	Meeting scheduled with FSIN Chiefs on May 7, 2007
Pasqua First Nation	April 27, 2007	Meeting with Council	Alberta Clipper preliminary route mapping for review. Hard copy of revised Alberta Clipper Project power point presentation dated April 24, 2007	Provided overview of Alberta Clipper Project and consultation program	To follow-up with a formal Project presentation to Chief and Council on May 18, 2007. To provide Project information on potential employment and business opportunities
Star Blanket First Nation	April 27, 2007	Meeting with Councillor	Review of preliminary Alberta Clipper route map.	Provided overview of Alberta Clipper Project and consultation	Obtained information on consultation process - to include



Aboriginal Stakeholder	Date	Event	Information and Materials Provided	Comment	Next Step
			Hard copy of revised Alberta Clipper Project power point presentation dated April 24, 2007	program	community Elders. Follow up meeting to take place on May 14, 2007
Métis Nation of Alberta Region 3	April 27, 2007	Information Drop off	Five copies of open house information package	Follow-up request to be provided with additional copies of Alberta Clipper Project information	Continue to provide Alberta Clipper Project information and updates
Standing Buffalo Dakota First Nation	May 2, 2007	Phone Call	None	Phone call to Chief Redman to request a meeting in Regina on May 2, 3 or 4 <sup>th</sup> - Chief Redman to call back to confirm	Await response from Chief Redman
Tribal Chiefs Peacekeeping Conservation Commission	May 2, 2007	Phone Call	None	Phone call received from Tribal Chiefs representative declaring interest in the Alberta Clipper Project: Cold Lake First Nation, Frog Lake First Nation, Kehewin, Onion Lake First Nation and Whitefish Lake #128 Band (Goodfish)	Follow-up meeting planned for May 11, 2007
Neekaneet First Nation	May 3, 2007	Fax	Alberta Clipper re-route notification letter and map, preliminary route mapping for review	Letter dated April 25, 2007 providing information on an open house being held in Grand Coulee, SK pertaining to the Alberta Clipper proposed re-route south of Regina. A map of the proposed re-route was also provided with the information	



Aboriginal Stakeholder	Date	Event	Information and Materials Provided	Comment	Next Step
Ocean Man First Nation	May 3, 2007	Fax	Alberta Clipper re-route notification letter and map, preliminary route mapping for review	Letter dated April 25, 2007 providing information on an open house being held in Grand Coulee, SK pertaining to the Alberta Clipper proposed re-route south of Regina. A map of the proposed re-route was also provided with the information	
Standing Buffalo Dakota First Nation	May 3, 2007	Fax and mail	Letter to Chief	Response to correspondence received from SBDFN on April 26th	Confirm receipt of letter and request meeting to discuss
Cowessess First Nation	May 3, 2007	Meeting	None	Cowessess First Nation informed Enbridge representatives the First Nation owns land parcels near and adjacent to the Alberta Clipper ROW	Enbridge representatives to maintain contact with the Cowessess First Nation and attempt to arrange a meeting date with Chief and Council
Carry the Kettle First Nation	May 3, 2007	Meeting	None	Carry the Kettle First Nation Band Member inquired about economic participation opportunities related to the Alberta Clipper Project	Carry the Kettle Band Member to provide further information on business capacity / proposal once completed
Keeseekoose First Nation	May 3, 2007	Meeting	Contact Information	Keeseekoose First Nation informed Enbridge representatives that the Alberta Clipper re-route to the south of Regina could potentially cross the First Nation's TLE lands	Enbridge representatives to maintain contact with the Keeseekoose First Nation and attempt to arrange a meeting date with Chief and Council to provide further Project information

Aboriginal Stakeholder	Date	Event	Information and Materials Provided	Comment	Next Step
Samson Cree Nation	May 4, 2007	Meeting	Cover letter dated May 3, 2007 "Update of Enbridge Pipelines Inc. Current Projects" Community Consultation / Engagement Summary 2006/2007 Enbridge Project Hard copy of cover letter dated December 20, 2006 accompanying copy of Alberta Clipper Preliminary Information Packages Open house information package	At a meeting held in Calgary on May 4, 2007, Enbridge representatives provided information on the Alberta Clipper and other Enbridge projects. Discussion was held around potential economic and employment stemming from the Projects.	Continue dialogue with Samson Cree Nation to understand impacts that the Alberta Clipper Project may have on the Samson Cree Nation.
Saskatchewan First Nation Corridor Communities / co-facilitated with the Federation of Saskatchewan Indian Nations	May 7, 2007	Meeting	Meeting Agenda dated May 7, 2007 Printed copy of Alberta Clipper Project power point presentation Open house information packages	On May 7, 2007 a meeting was co-facilitated by Enbridge Pipelines Inc. and the Federation of Saskatchewan Indian Nations. Enbridge representatives provided a formal power point presentation to attending Saskatchewan Corridor First Nation Chiefs or their delegated representatives and responded to questions raised regarding the information	FSIN to confirm a formalized engagement process with Saskatchewan First Nation communities that may be impacted by the Project.
Swan Lake First Nation	May 8, 2007	Letter	Enbridge letter to Chief and Council dated May 8, 2007	Enbridge meeting took place on April 26, 2007. The Enbridge letter was a follow-up to this	Continue to address issues and concerns, continue to provide Project information.

Section 6 – Public Consultation and Aboriginal Engagement

Aboriginal Stakeholder	Date	Event	Information and Materials Provided	Comment	Next Step
				meeting for purposes of providing further information and requesting another meeting and invitation to tour the Enbridge Pipelines Control Centre Operations in Edmonton.	
Standing Buffalo Dakota First Nation	May 10, 2007	Phone Call	None	Chief phoned to request a meeting in Calgary	Confirm meeting
Standing Buffalo Dakota First Nation	May 11, 2007	Meeting	Reviewed Enbridge letter dated May 3, 2007	Chief confirmed receipt of May 3 correspondence, Project support hinges on Crown's action on land claim issue	Continued dialogue around reasonable solutions
Tribal Chiefs Peacekeeping Conservation Commission Cold Lake First Nation Frog Lake First Nation Kehewin Cree Nation Onion Lake First Nation Whitefish Lake #128 Band (Goodfish)	May 11, 2007	Meeting	Open House Information Package	Enbridge meeting took place on May 11, 2007 in follow-up to a meeting request. Alberta Clipper Project information was provided. Community representatives expressed interest in business opportunities.	Community follow-up letters will be sent to Enbridge indicating interests in the Alberta Clipper Project. Continue to provide Project information and obtain a move forward process for consultation. Enbridge to provide more detailed mapping of the Alberta Clipper route
Swan Lake First Nation	May 14, 2007	Phone Call	None	Follow up phone call to confirm receipt of Enbridge letter dated May 8, 2007	Follow up meeting from April 26, 2007 for purposes of addressing issues and concerns. Meeting arrangements for upcoming meeting.

**6.3.4 Key Issues and Comments**

Aboriginal groups have raised a number of broad issues during the consultation activities. Their comments and Enbridge’s responses to them are summarized in Table 6-13 below:

**Table 6-13: Summary of Aboriginal Key Issues and Enbridge Responses**

Issue/Concern	Enbridge Response
<b>Business &amp; Contracting Opportunities</b>	
What types of business and contracting opportunities are available?	While it is too early in the process to determine this, the types of business and contracting opportunities that are typically available include facility site development and clearing, electrical and mechanical services, as well as ROW clearing, re-vegetation and restoration.
Would Enbridge consider investment by First Nations in this project?	Enbridge has considered this and concluded that because the Alberta Clipper Project is an expansion of our Mainline System and will be integrated both operationally and from an ownership perspective with EPI, it is not a suitable Project for external investment.
Does Enbridge contract out to Aboriginal owned companies?	It is too early in the project to determine the types of contract opportunities that will be available. At the appropriate time, Enbridge will seek ways for Aboriginal owned companies to participate in the tendering process.
<b>Employment Opportunities</b>	
How can I get a job working on the construction?	It is still very early in the Project. Most of the work and hiring will be done by our primary contractors and sub-contractors, including the pipeline construction companies. As construction is not scheduled until 2008 (pending regulatory approval), these companies have not yet been selected. We will be providing more information on employment opportunities in the future. You can also check our website for updates as the project moves ahead or contact our toll-free project line at any time for more information.
<b>Environment</b>	
There was a pipeline release in our area approximately 12 years ago, what was done about it? (Swan Lake First Nation in Manitoba)	Enbridge response by letter:  We believe the incident you are referring to be one that occurred on October 3, 1994 at MP 717.46 which is about 18 kilometres away from the Swan Lake First Nation. Seventy percent of the oil was recovered initially and the site was and is being remediated in accordance with all regulatory and environmental standards. Since the incident, we have monitored the soil, groundwater, and surface water. Some areas with low hydrocarbon concentrations have been returned to the landowner for annual cropping. Soil and groundwater monitoring was conducted in these areas in 2006 and is continuing.
What would happen in the event of a pipeline spill which contaminated our community water source?	Enbridge response by letter:  Enbridge is undertaking an environmental assessment for the Alberta Clipper Project. The environmental assessment will be filed with the



Section 6 – Public Consultation and Aboriginal Engagement

	<p>NEB application for the Alberta Clipper Project and will include an analysis of the potential effects of the Project including the effects on the aquifer at Swan Lake. To the extent Enbridge determines that the presence of the aquifer warrants mitigation strategies above and beyond best practices, procedures, and design codes that currently apply to Enbridge construction and operations activities, we will address such strategies as part of the NEB process. In general, mitigation considerations could include pipeline design, construction practices, frequency of pipeline integrity reviews, and emergency response plans. We are in the process of developing answers to these questions and will be forwarding additional information as it becomes available.</p>
<p>How will Enbridge monitor the pipeline and prevent pipeline ruptures and spills?</p>	<p>Pipelines are a safe and practical transportation mode to move large quantities of petroleum and petroleum products. As an industry leader, Enbridge has a comprehensive and evolving preventive maintenance program, including around-the-clock computerized monitoring of pipeline flow, regular internal inspections of the line and aerial patrols of the ROW. Externally, Enbridge has implemented an educational outreach program for landowners and excavators regarding the locations of pipelines and the need for awareness and pipeline safety. Enbridge is an active and supportive member of First Call.</p>
<p><b>General Project Information</b></p>	
<p>How deep will the pipeline be buried?</p>	<p>In all cases our pipelines meet or exceed government standards for burial depth at the time of construction. However, over time water and wind erosion may reduce the total cover of the lines. In some cases additional cover may be added where facilities have been identified as shallow. For larger areas or where additional fill is not practical, we may consider lowering the pipeline for safety.</p>
<p>What will the pipeline carry?</p>	<p>The proposed Alberta Clipper pipeline is a proposed crude oil pipeline.</p>
<p>Is the pipeline route finalized?</p>	<p>The preliminary route proposed is generally part of Enbridge's current pipeline ROW from Hardisty, Alberta to Superior, Wisconsin and will be part of our application to regulators. The proposed route was chosen in order to minimize disruption to communities and to avoid known environmentally sensitive habitat and wildlife areas as much as possible. The route is, of course, subject to regulatory approval and we welcome your input. Following public consultation and surveys, the final route will be selected and incorporated into our regulatory application.</p>
<p><b>Right-of-Way &amp; Land Access</b></p>	
<p>Is Enbridge aware that 13 First Nations own land that could potentially be affected by a re-route around Regina?</p>	<p>Enbridge is aware that there are various First Nation land interests in and around Regina and we are currently working to obtain mapping that would detail the scope and the legal nature of these land interests. We will work diligently with those First Nations to identify feasible options in order to minimize impact to these land parcels.</p>
<p>Can you change the route to avoid crossing reserves and TLE lands? Several residential and commercial developments are planned for these lands.</p>	<p>Enbridge will work diligently with First Nations to identify feasible options in order to avoid impacting residential and commercial developments. Where Enbridge becomes aware of TLE land, the company is committed to working with First Nations to minimize impacts on their land where practical. The Alberta Clipper Expansion Project has been routed to primarily follow the existing Enbridge Mainline ROW. These kinds of issues should therefore be minimized.</p>

As with issues identified during public consultation activities, Enbridge is committed to responding to all issues raised by Aboriginal groups. Follow-up actions are being, and will continue to be, undertaken at various levels regarding these matters to try and address any outstanding concerns. Enbridge's consultation efforts will continue through the regulatory process and, if and when approval is granted, these activities will be extended through the construction and operations phases.

### **6.3.5 Next Steps**

Enbridge will continue to actively engage all identified Aboriginal communities and organizations in meaningful dialogue concerning the Project. We will continue to meet with groups to provide information and updates about the Project, respond to inquiries, solicit issues, obtain information and respond to concerns that may arise. Further to Project specific meetings, Enbridge anticipates active involvement in community events and initiatives in an effort to build and foster long-term relationships with Aboriginal communities and organizations. Should an Aboriginal group or community that has not been previously engaged identify itself as being affected by the Project, Enbridge will engage with that Aboriginal group or community for the purposes of exchanging information respecting the Project, hearing and addressing concerns to the extent possible, and ensuring on-going dialogue about the Project, its potential implications and benefits.

Discussions will continue with a goal to achieving a formalized process between Enbridge and Aboriginal communities and organizations to help guide engagement and consultation activities. Moving forward, Enbridge will provide regular updates to the NEB as to the progress of its Aboriginal engagement program.

## **7 APPENDICES**

- 1-1 Concordance Tables
- 2-1 2006 Annual Report
- 2-2 CAPP Crude Oil Production and Supply Forecast 2006-2020, May 2006
- 2-3 EPI Long Range Forecast (2006-2015), June 2006 and EPI Long Range Forecast (2007-2016), May 2007
- 2-4 Market Assessment for the Alberta Clipper Project 2010-2020, Muse Stancil, March 2007
- 2-5 Forecast Throughput Graphs
- 3-1 Engineering Report
- 4-1 Location of Crown Lands
- 4-2 Section 87(1) Notice
- 4-3 Land Acquisition Agreements
- 6-1 Corporate Social Responsibility Policy
- 6-2 Indigenous Peoples Policy
- 6-3 Public Awareness Program Advertising
- 6-4 Survey Notification Letter September 2006
- 6-5 Open House Displays and Other Communications
- 6-6 Open House Advertising
- 6-7 Website Information
- 6-8 Open House Exit Survey
- 6-9 Summary of Open House Exit Survey Results
- 6-10 Manitoba Landowner Meetings Invitation January 2007
- 6-11 Manitoba Landowner Meetings Presentation, List of Attendees and Agenda